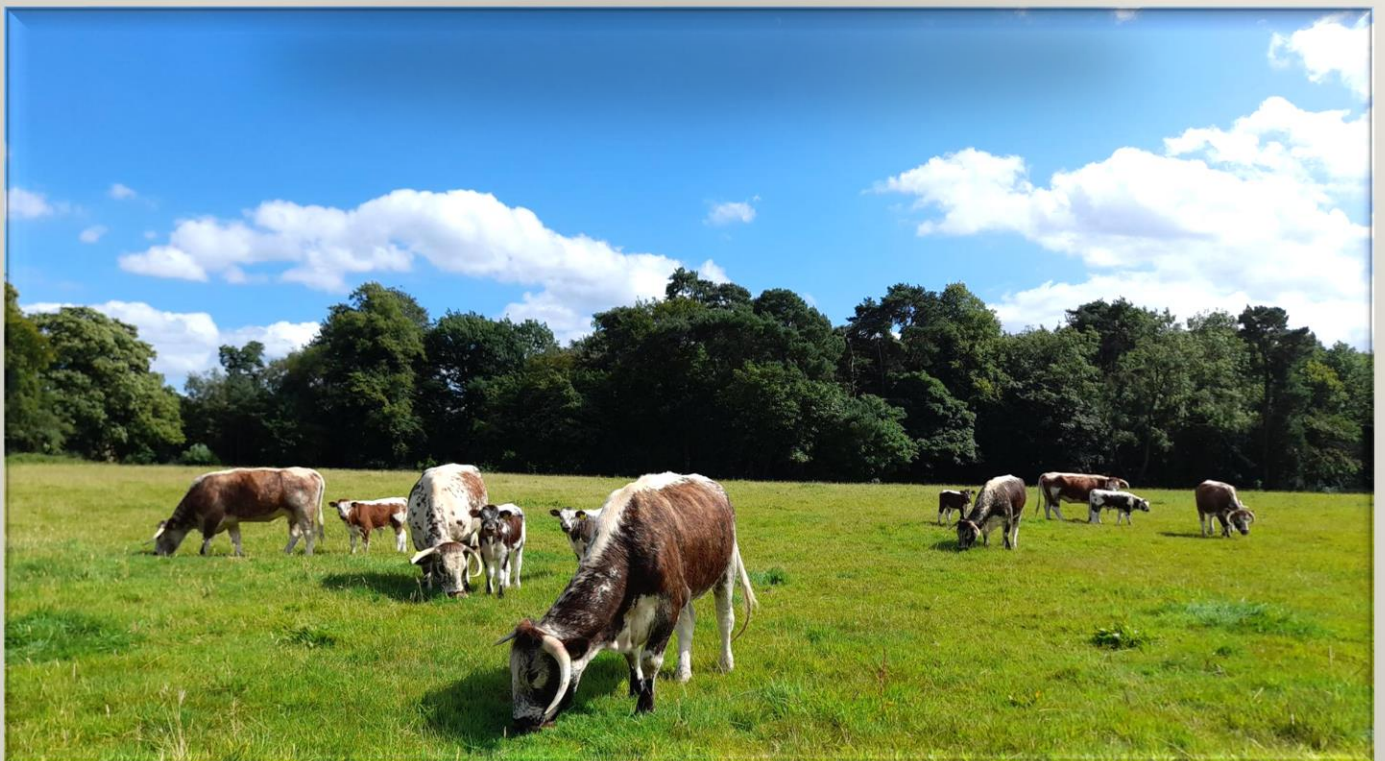


MONDAY 23rd August 2021

7 Cows With Calves, 2 In Calf, 13 Feeding Bulls &
378 Steers & Heifers

Staff are on hand to assist with unloading from 7am in the Cattle section.

Please make sure Breeding Cattle, Feeding Bulls & Lots 751-1000 are penned for 9am to allow time for paperwork to be processed & the sale to start on time.



Monday 23RD August 2021

Breeding Cattle

Bollin Valley Partnership	6 Pedigree Longhorn Cows With Calves At Foot, Running With Ped Longhorn Bull, Fishwick Sherman See Photo
I Williamson, Matlock	2 Holst Cows Run With Lim Bull, 4-5 Mths
RW Valle, Summerley	1 Lim Cow & Lim Bull Calf

Young Bulls

Park Farm Land Ltd, Sheffield, F/A	1 Lim, 8 Mths
J Brough & Son, Rudyard F/A	2 A Angus, 17-23 Mths
E Lodge, Alsecar	10 A Angus, 12-18 Mths, Named Sire

NAMED SIRES

For the avoidance of doubt, we will only announce NAMED SIRES if the sire's tag number is printed on the passport, accompanied by the full name of the registered bull.

We will announce SIRE TAG if there is a sire's tag number printed on the passport, but no name of a registered bull. You will appreciate that we do not have time to verify this information.

The details supplied to us on the signed entry form MUST be accurate, DNA tests are regularly carried out and the vendor will be liable for any discrepancies.

ALTERATIONS TO PASSPORTS

Please make best efforts to avoid sending cattle where there is the need to alter the passport because of incorrect sex or breed.

These matters should be corrected before sending stock to market.

Store Cattle

PEN	LOT NUMBER	VENDOR	
1A	751-758	CG Massey & Son, Holmes Chapel	4 A Angus Strs, 5-6 Mths 4 A Angus Hfrs, 5-6 Mths N Sires
1	759-762	AC Lowe, Holmesfield F/A	4 Hfd Hfrs, 6-7 Mths, Named Sire
1	763-766	GE Brookes & Partners, Loxley	3 B Blue X Strs, 5-13 Mths 1 B Blue x Hfr, 11 Mths
2	767-768	PR & G Helliwell, Oughtibridge	2 A Angus Hfrs, 9-11 Mths, Named Sire
2	769-776	TW Kent & Co, Yeaveley, F/A	8 B Blue Strs & Hfrs, 7-9 Mths BVD Tag & Tested, Wormed Eprinex
3	777-781	JW & AJ Dakin, Smalley	5 Blond Strs, 10-15 Mths Suckler Bred, Corn Fed
3	782-787	T Neville, Tansley, F/A	4 B Blue Strs, 12 Mths 2 B Blue Hfrs, 13 Mths
4-5	788-801	Park Farm Land Ltd, Sheffield, F/A	8 Lim Strs, 8-12 Mths 5 Lim Hfrs, 8-12 Mths 1 Lim Hfr, 21 Mths
5	802-806	E Brailsford, Matlock	5 B Blue Hfrs, 14 Mths
6	807-816	CS Edge, Ballidon	5 Char Strs, 14 Mths 5 Char Hfrs, 14 Mths
7	817-820	HC Gilbert, Edale	4 Sim Strs, 14 Mths
7	821-823	M Heathcote, Hartington	2 Lim Hfrs, 14 Mths 1 Sim Hfr, 14 mths
7	824-826	WI Fletcher, Sheldon, F/A	2 Lim Hfrs, 12 Mths 1 B Blue Hfr, 12 Mths
8	827-835	RM Calcott, Tamworth, F/A	9 Lim Strs & Hfrs, 12-15 Mths
9-10	836-855	M & DJ Allsop, Ripley	20 A Angus Strs/Hfrs, 12-18 Mths, Named Sire
11	856-868	R Bradbury & Sons, Middleton by Youlgreave F/A	13 A Angus x Hfrs, 12-18 Mths, Named Sire
12	869-873	RD & A Lomas, Calow	1 Here Str, 16 Mths, N Sire 4 Here Hfrs, 14-18 Mths, N Sires

12	874-878	W Watts, Thurgoland F/A	5 B/W Strs, 15 Mths, BVD T&T, 4yrTB
13-15	879-904	CF & M Percival, Youlgreave, F/A	26 BB/ Lim Strs & Hfrs, 16-18 Mths
16-17	905-922	S Raines, Grangemill	12 Here Strs, 12-14 Mths 6 Here Hfrs, 12-14 Mths
17	923-926	Walker Farms, Hulland Ward	2 Hfd Strs, 10 Mths 2 Hfd Strs, 18 Mths, All Named Sire BVD Tag & Tested, High Health Herd
18	927-929	BG Godber, Kimberley	3 Sim Hfrs, 14 mnths
18	930-935	D Brown, Brassington	6 Here Strs & Hfrs, 14-16 Mths, N Sires
18	936-938	M Woodhouse, Derby	3 BB Strs, 15 Mths
19-20	939-954	JW & RG Ede, Youlgreave, F/A	16 Cont Strs & Hfrs, 16-20 Mths
20	955-958	J Bramall, Totley	4 Sim Strs, 22 Mths
21-22	959-972	GM Grindey & Sons, Hartington, F/A	4 B Blue Strs, 14-15 Mths 10 B Blue Hfrs, 14-15 Mths BVD Tag & Tested
22	973-976	T Stafford & Son, Ballidon F/A	2 B Blue Hfrs, 16 Mths 1 BB Str, 16 Mths 1 Holst Str, 16 Mths
23	977-986	WJ Sessions, Hilton F/A	10 B Blue x Strs/Hfrs, 15 Mths
24-25	987-1003	N & A Pancisi, Stanton	3 Char Strs & Hfrs 14 Saler Strs & Hfrs, 12-22 Mths
26-27	1004-1023	WH Burgess & Son, New Mills, F/A	14 A Angus Strs, 16-18 Mths, N Sires 6 A Angus Hfrs, 18-19 Mths, N Sires BVD Tag & Tested See Photo
28	1024-1029	Cox Brothers, Gt Longstone	2 Char Strs, 15 Mths 3 Char Hfrs, 15 Mths 1 Fries Str, 27 Mths
28	1030-1034	Sandhurst Farm, Bradbourne, F/A	5 Lim Strs, 20 Mths
29-30	1035-1052	OR Prince & Partners, Hoar Cross, F/A	18 Here/bb/Fries/Lim Strs & Hfrs, 18-19 Mths, N Sires
30	1053-1056	PW Yates, Longford	2 Lim Hfrs, 17 Mths 2 A Angus Hfrs, 21-22 Mths, N Sire
31	1057-1063	S Hardy, Bonsall	7 Here Strs, 18-20 Mths, N Sires
31	1064-1067	N & D Woolley, Derby	4 AA Hfrs, 18 Mths, Named Sire, BVD tag & tested
32	1068-1072	GS & L Wheeldon Ltd, Atlow, F/A	3 B Blue Strs, 18 Mths 1 B Blue Str, 20 Mths 1 Lim Hfr, 22 Mths
32	1073-1079	M Webster, Ashbourne F/A	3 B Fries Strs, 20 Mths 2 AA Strs, 20 Mths 2 BB Strs, 20 Mths
33	1080-1081	AP Pugh, Pllisley	1 Hfd Str, 20 Mths, Named Sire 1 BB Str, 19 Mths
33	1082	J & D Skidmore, Chelmorton F/A	1 Baz Str, 22 Mths
33	1083-1089	Leasow Partners, Uttoxeter, F/A	2 Lim Strs, 21 & 24 Mths 4 Lim Hfrs, 24 Mths 1 A Angus Str, 23 Mths, N Sire
34	1090-1095	D & A Dickinson, Bradbourne	6 B Blue & Lim Strs & Hfrs, 18-19 Mths
34	1096-1097	G Hadfield, Mellor	2 B Blue Hfrs, 20-24 Mths
34	1098-1099	R & L Vernon, Marston Montgomery	1 B Blue Str, 22 Mths 1 Fries Str, 23 Mths
35-36	1100-1114	AW Gilman & Son, Wetton	14 Hfd/BB/ AA Strs/Hfrs, 18-20 Mths, Named Sire
36	1115-1118	FG & JR Critchlow, Sheen	2 Lim Strs, 22 Mths 1 BBx Hfr, 25 Mths 1 Sim x Hfr, 25 Mths
37	1119	J Brough & Son, Rudyard F/A	1 A Angus x Hfr, 23 Mths
37	1120-1121	GS Heathcote & Son, Stockport	2 Mont x Strs, 23 Mths TB4
37	1122-1127	R Webster, Fenny Bentley F/A	6 Char Hfrs, 24 Mths
38	1128-1129	DE Jones, Rotherham	2 A Angus Hfrs, 26 Mths, N Sires

SHARE FARMING OPPORTUNITY PEAK DISTRICT

Excellent stockperson(s) with a passion for dairy farming sought for fabulous opportunity to share farm 285 acres of grassland and 25 acres in CSS.

On offer, a modern dairy unit with 4 Lely A5 robots and ancillary equipment

Excellent facilities including state of the art housing for 245 milkers (sand beds and yokes) plus youngstock and dry cow accommodation

Top-class herd currently yielding over 12,000 litres and top 5% Lely system producer.

Muller milk contract

Cottage accommodation available on farm by separate negotiation

Hard work, motivation and the vision to enable a proactive partnership to take this farm forward, a must.

For further details please contact paul.macer@kiteconsulting.com <<mailto:paul.macer@kiteconsulting.com>>



Bakewell Market

STORE LAMB SALE

27th August
10.30am

Results from the first Store Lamb Sale held on 12th August

Texels to £100.00	ave £82.22
Suffolks to £105.00	ave £86.17
Charolais to £88.00	ave £85.29
Beltex to £95.00	ave £91.71

5,530 ENTERED

Any Enquiries Call
Ivor on 07977 449126, Peter on 07973 982443
or Alastair on 07973 982441

Bakewell Office
T: 01629 812777
E: bakewell@bagshaws.com
A: Bagshaws, The Agricultural Business Centre,
Bakewell, DE45 1AH

www.bagshaws.com

BAGSHAW'S
Land - Property - Livestock

