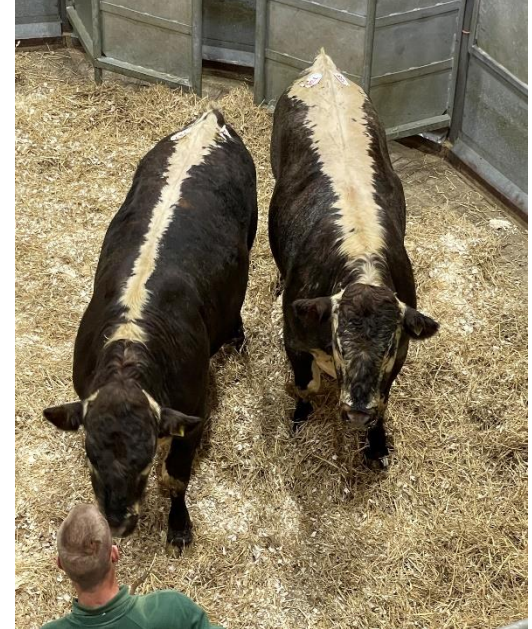


MARKET REPORT

BAKEWELL MARKET

Monday 2nd August



Decent entries in all departments with 599 Cattle and 1,208 Sheep on offer.

Cattle prices still outstanding whether Finished, OTM or Store.

Lamb prices a shade easier, but still well ahead of last year's figures. Cull sheep remain very dear.

There were 321 Store & Breeding cattle forward with trade remaining very fast indeed.

Steers reached £1,520, Heifers £1,310 and Feeding Bulls £990.

There was a special entry of Longhorn Cattle with Steers to £1,180 and Heifers to £1,150.

Store Cattle are clearly needed by finishers anxious to replenish their stocks, if you have cattle to sell speak to Alastair Sneddon on 07973 982441. Bakewell buyers would like the opportunity to bid for your cattle.

Another useful entry of 105 Finished Cattle with trade remaining good. The best on offer to 278p and £1,805 with the 43 heifers selling at an average of 231.6p a clear illustration of the strength of demand.

In the OTM section things were much the same with top figures of 210p and £1,497.

The average emerged at a very healthy 145.5p.

There were 50 calves with trade good, Bulls to £472 and Heifers to £376.

Turning to the sheep section there were 874 lambs on offer with top figures 251p and £116.85.

The SQQ a shade less than last week at 230.6p.

Lastly there were 322 Cull Sheep with Ewes to £158 and an average £105.22.

Forthcoming Market Fixtures

Thursday 5th August: Lunchtime Sheep Sale, See our Facebook page for special entries.

Bakewell Market Store Sheep Sales

We are now taking entries for the sheep sales of both Store Lambs and Breeding Sheep with the dates set out below.

With finished lambs selling so well and the recent trade for cull ewes with averages consistently over £100 we are anticipating a strong demand for Theaves at our 3rd September Sale.

If you have entries for any of the sales, please them in to the Bakewell Office on 01629 812777 or speak to any of the auctioneers.

Thursday 12th August – Store Sheep

Friday 27th August – Store Lambs

Friday 3rd September – Theaves & Ewes (Show & Sale)

Friday 10th September – Store Lambs

Thursday 16th September – Mule Ewe Lambs (Show & Sale)

Friday 17th September – Ewe Lambs (any other Breed, Show & Sale)

Friday 24th September – Store Lambs

FARM DISPERSALS

Saturday 14th August – Mile End Farm, Hilton

Other News

Store Cattle List Covers

After many months of thinking up humorous and cryptic front covers for the weekly store list, I have run out of ideas. So, we are going to try something different.

Last week's photograph of the Longhorn Cattle in their natural surroundings was well received, attracted plenty of interest and the cattle sold well too.

So, if you have an entry a future week send me a photograph and we will put it on the front of the Store List.

Email to: alastair.sneddon@bagshaws.com

Or text it to 07973 982441

Farming in Protected Landscapes

A new grant scheme for farmers and land managers in the Peak District National Park.

Join a virtual meeting to learn more, organised by the NFU and the Farming Life Centre on **Wednesday 4th August at 7.30pm.**

Hear about the scheme and ideas for what could be eligible for capital grants. Speakers: Suzanne Fletcher & Rebekah Newman.

To join the Microsoft Teams meeting – visit the Farming Life Centre Facebook Page (events section) to find the link or email the organisers to receive a link directly.

Any queries about how to join the meeting contact: Andrew Critchlow, NFU Derbyshire County Adviser: 07880 385685 andrew.critchlow@nfu.org.uk or Lorna Critchlow, Rural Resilience & Business Development Coordinator at the Farming Life Centre: 07969 951101 lorna@thefarminglifecentre.org.uk

For queries about Farming in Protected Landscapes contact: Telephone: 01629 816270 Email: farming@peakdistrict.gov.uk



We have a result:

The ride in numbers

150 miles

10,650 feet of climbing

17 Hours, including food stops

Calories consumed – rather not say

Funds raised for RABI/FCN

£8,520.00

The event raised £4,260 which has been matched by a donation from the Bagshaws Partnership to produce the grand total above.

**123 Barren, OTM and Feeding Cows Overall Average 145.5p
(Auctioneer Oliver Hiles)**

More cattle than last week and also more than the equivalent sale last year. Prices are holding strong with the cows equally as dear as last week, but a good deal more plain Holsteins in the entry that affected the averages.

Top price today was a well-fed Blonde Heifer (39 mnths) from Messrs Mason Bros, Nottingham. Best cows sold at 202p for Michael Wynne with good big black lims to 197p or £1497. 25 Natives had Hereford to 165p, Angus to 194p and Galloway to 165p.

Sample Results:

210p/kg	550kg	Blonde x	Mason Bros Livestock, Notts
202p/kg	702kg	B Blue x	M Wynne, Snitterton
197p/kg	760kg	Lim	P Jones, Uttoxeter
195p/kg	632kg	Saler	Mason Bros Livestock, Notts
194p/kg	526kg	AA	Meadow Place Farms, Youlgreave
190p/kg	666kg	Lim	M Wynne, Snitterton
190p/kg	786kg	Char	R Prue & Son, Alfreton
190p/kg	638kg	Baz	Mason Bros Livestock, Notts
190p/kg	666kg	Lim	N & S Pearson, Peak Forest
188p/kg	560kg	Sim	Mason Bros Livestock, Notts
185p/kg	658kg	Lim	AC Simpson, Bradwell
183p/kg	660kg	Lim	AC Simpson, Bradwell
181p/kg	614kg	L Horn	P Ritter & Sons, Peak Forest

And Gross Prices:

£1497.20	760kg	Lim	P Jones, Uttoxeter
£1493.40	786kg	Char	R Prue & Son, Alfreton
£1422.00	790kg	Char	R Prue & Son, Alfreton
£1418.04	702kg	B Blue x	M Wynne, Snitterton
£1370.60	770kg	B Blue x	MP Elliott & Son, Eyam
£1336.50	810kg	AA	JW Bassett, Hartington
£1284.80	730kg	AA	M & DG Allsop, Derby
£1265.40	666kg	Lim	M Wynne, Snitterton
£1257.30	762kg	Gall	M & DG Allsop, Derby

62 Black & White and ex-dairy cows Ave 125.8p/kg

The average a good piece less but you need to see the cows to make the comparison. Like for like they are a very similar trade.

10 better fed cows 146p plus

Big Holsteins 135-145p

Leaner Cows 120-130p

Plain Cows Under 110p but more about today.

Best B/W's today

154p/kg	£1222	Fries Cow (5yrs)	FJ Gould & Son, Longnor
154p/kg	£1204	Holst Cow (10 yrs)	Hawksworth Farms, Shardlow
154p/kg	£1059	Holst Cow (5yrs)	Moor Farms, Bakewell
153p/kg	£1025	Fries Cow (9yrs)	RR Mason & Son, Hulland
151p/kg	£730	S Horn Hfr (30mnths)	A & EM Howe, Litton
149p/kg	£1093	Fries Cow (10yrs)	WB & DE Gyte, Barmoor Clough
148p/kg	£1059	Holst Cow (5yrs)	Springfield Farm, Ambergate
146p/kg	£934	Holst Cow (5yrs)	D & PW Kirkham, Alderwasley
146p/kg	£1182	Holst Cow (7yrs)	WJ Sessions & Son, Hilton
146p/kg	£984	Norw Cow (6yrs)	E Morten & Sons, Barmoor Clough

3 OTM Bulls

154p/kg	£1133	Blonde	DC Hoggarth, Newark
140p/kg	£1442	Char	DR Rowland, Castleton

9 OTM Steers

195p/kg	£1404	Sim (32 mnths)	RW Valle, Summerley
177p/kg	£1256	AA (37 mnths)	M & DH Allsop, Derby

105 FINISHED CATTLE – overall average 220.6p (Auctioneer Oliver Hiles)

A few less about and an almost identical average to last week.

24 Finished Bulls ave 206p/kg

14 Continental, 3 Longhorn and 7 B/W on offer and a solid price for all with strong bidding from all at ringside. Pure Blondes peaked at 245p from Charles Mycock, Flagg with big boys from John Ottewell at 235p or £1786. Longhorns to 200p with strong Friesian to 192p or £1190.

Sample Results:

245p/kg	606kg	Blonde x	CE Mycock, Flagg
235p/kg	760kg	B Blue x	JT Ottewell, Calow
230p/kg	636kg	Char	K Harrop, Alport
228p/kg	786kg	Char	R Prue & Son, Alfreton
224p/kg	648kg	Char	K Harrop, Alport
221p/kg	738kg	Char	R Prue & Son, Alfreton
221p/kg	630kg	Char	K Harrop, Alport
220p/kg	538kg	B Blue x	JR Johnson & Sons, Ipstones
220p/kg	720kg	Char	JT Ottewell, Calow
219p/kg	688kg	B Blue x	PJ Dale. Denby Village

And Gross Prices:

£1792.08	786kg	Char	R Prue & Son, Alfreton
£1786.00	760kg	B Blue x	JT Ottewell, Calow
£1630.98	738kg	Char	R Prue & Son, Alfreton
£1584.00	720kg	Char	JT Ottewell, Calow
£1506.72	688kg	B Blue x	PJ Dale, Denby Village

£1484.70	606kg	Blonde x	CE Mycock, Flagg
£1462.80	636kg	Char	K Harrop, Alport
£1451.52	648kg	Char	K Harrop, Alport
£1392.30	630kg	Char	K Harrop, Alport
£1317.60	610kg	Blonde x	CE Mycock, Flagg

38 Steers – overall average 218.1p/kg

20 Continental, 10 Native and 8 B/W on offer with strong money for all and maintaining the recent good prices. Best suckler bred Lims topped at 262p or £1703 for Stan & Geoff Evans with another 13 over 230p (many dairy bred or Natives. Dairy Shorthorn to 204p, Monty to 216p and Friesian to 189p.

Sample Results:

262p/kg	650kg	Lim	S Evans, Edwinstowe
246p/kg	670kg	Lim	Thorp Farms Ltd, Baslow
244p/kg	558kg	Blonde x	C Molloy, Hucknall
244p/kg	582kg	Blonde x	C Molly, Hucknall
240p/kg	620kg	B Blue x	RW & R Walker, Ashgate
236p/kg	656kg	Hfd	A Gray, Biggin
236p/kg	712kg	B Blue x	RG Bacon, Wadshelf
235p/kg	714kg	Lim	GW Johnson & KG Shuttlewood, Burnaston
234p/kg	668kg	Hfd	A Gray, Biggin
230p/kg	626kg	Sim	D Hadfield & Daughter, Tideswell
230p/kg	682kg	B Blue x	KJ White & Co, Swinscoe
230p/kg	598kg	AA	WB & DE Gyte, Barmoor Clough
230p/kg	718kg	Hfd	KJ White & Co, Swinscoe
230p/kg	572kg	B Blue x	RW & R Walker, Ashgate

And Gross Prices:

£1703.00	650kg	Lim	S Evans, Edwinstowe
£1680.32	712kg	B Blue x	RG Bacon, Wadshelf
£1677.90	714kg	Lim	GW Johnson & KG Shuttlewood, Burnaston
£1651.40	718kg	Hfd	KJ White & Co, Swinscoe
£1648.20	670kg	Lim	Thorp Farms Ltd, Baslow
£1632.16	808kg	B Blue x	NS Burgin, Dronfield
£1568.60	682kg	B Blue x	KJ White & Co, Swinscoe
£1563.12	668kg	Hfd	A Gray, Biggin
£1556.28	786kg	Lim	NS Burgin, Sheffield
£1548.16	656kg	Hfd	A Gray, Biggin

43 Finished Heifers – overall average 231.7p/kg

Less heifers on offer but a magical price again to average 231p with the best 2 over 270p. Steven & Steff Wells topped the day at 278p for a stunning Blue just pipping Stan Evans at 274p who had others at 266p (£1707) and 255p (£1805). Best 9 over 250p, 9 Hereford to 223p and 4 Angus to 232p.

Sample Results:

278p/kg	534kg	B Blue x	MJ Wells & Son, Monyash
274p/kg	582kg	Lim	S Evans, Edwinstowe
266p/kg	642kg	Lim	S Evans, Edwinstowe
258p/kg	508kg	B Blue x	MJ Wells & Sons, Monyash
258p/kg	498kg	Blonde x	C Molloy, Hucknall
256p/kg	558kg	Blonde x	C Molloy, Hucknall
255p/kg	708kg	B Blue x	S Evans, Edwinstowe
252p/kg	532kg	Lim	Hazledine Farms, Watnall
250p/kg	618kg	Lim	GW Johnson & KG Shuttlewood, Burnaston
248p/kg	636kg	Lim	Hazledine Farms, Watnall
246p/kg	596kg	Lim	AJ Chadfield, Ashbourne
244p/kg	550kg	Sim	AJ Chadfield, Ashbourne
244p/kg	560kg	Lim	AJ Chadfield, Ashbourne
244p/kg	516kg	Lim	Hazledine Farms, Watnall
242p/kg	560kg	Lim	NA Birch, Monyash
240p/kg	710kg	B Blue x	RG Bacon, Wadshelf

And Gross Prices:

£1805.40	708kg	B Blue x	S Evans, Edwinstowe
£1707.72	642kg	Lim	S Evans, Edwinstowe
£1704.00	710kg	B Blue x	RG Bacon, Wadshelf
£1637.60	712kg	B Blue x	RW & R Walker, Ashgate
£1594.68	582kg	Lim	S Evans, Edwinstowe
£1577.28	636kg	Lim	Hazledine Farms, Watnall
£1545.00	618kg	Lim	GW Johnson & KG Shuttlewood, Burnaston
£1513.92	664kg	B Blue x	AK Belfield, Sheen
£1484.52	534kg	B Blue x	MJ Wells & Son, Monyash
£1466.16	596kg	Lim	AJ Chadfield, Ashbourne

STORE & BREEDING CATTLE - (Auctioneer Alastair Sneddon)

A wonderful entry for the time of year with several of the buyers commenting on the selection. All categories selling well but particular mention should go to the short finish types which sold exceptionally well.

The sale started with a small sample of Breeding stock including:

£1200	Blonde Cow, 86 mnths & Hfr Calf	CH Ede & Son, Alkmonton
£1160	Hfd x Cow, 80 mnths & Hfr Calf	J & M Riley, Hartington

There were only **17 Feeding Bulls** including:

£960	Lim x	14 mnths	D Sims & Son, Fenny Bentley
£800	Lim x	16 mnths	MA Nicholls, Uttoxeter
£980	Sim x	12 mnths	JC Shepherd, Dungworth
£990	Pied x	8-9 mnths	E & C Matkin, Idridgehay
£860	Sim x	16 mnths	James Marsden, Hathersage

Next Came the SPECIAL ENTRY OF LONGHORNS from the Bollin Valley Partnership at Macclesfield. These attracted a great deal of interest.

27 mnths Steers to £1,180, 28 mnths Heifers to £1,150 and 16 mnths Bulls to £890.

146 Steers ave £905

Quite a few small Dairy bred sorts at the start of the sale which reduced the average, but the stronger sorts were very dear indeed. Hereford & Angus crosses selling very well and Black & Whites exceptionally dear as is usually the case at Bakewell.

Sample Results:

£490	Saler x	4-5 mnths	AN & C Sread, Repton
£490	Holst	7-9 mnths	AN & C Sread, Repton
£900	B Blue x	11 mnths	T Neville, Tansley
£1240	Lim x	15 mnths	JE & JM Salmon, Marchington
£1040	Blonde x	14-15 mnths	JE & JM Salmon, Marchington
£1000	Holst	18 mnths	GE Brookes, Uttoxeter
£1100	Lim x	14 mnths	Miss J Bonsall, Atlow
£1160	Sim x	20 mnths	R Henshall, Chinley
£915	Angus x	18 mnths	RP Lawley, Draycott
£1080	Char x	16-20 mnths	Hawksworth Farms, Shardlow
£1005	B Blue x	17-20 mnths	Hawksworth Farms, Shardlow
£1130	B Blue x	17-18 mnths	FD Stubbs, Tissington
£1000	Hfd x	12-14 mnths	B Snow, Ipstones
£1190	Angus x	14 mnths	P Wood, Wirksworth
£1110	Hfd x	23-24 mnths	S Tudor, Kingsley
£1170	B Blue x	16-19 mnths	H Young, Peak Forest
£1130	Hfd x	24-25 mnths	JG Jackson, Wardlow
£1460	B Blue x	16 mnths	JW & RG Ede, Youlgreave
£1235	B Blue x	21-22 mnths	JW & RG Ede, Youlgreave
£1255	Hfd x	26-32 mnths	AW Gilman & Sons, Wetton
£1140	B Blue x	19-23 mnths	Miss CM Carnwell, Dilhorne
£1410	Angus x	23 mnths	J & D Skidmore, Chelmorton
£1290	Hfd x	23 mnths	J & D Skidmore, Chelmorton
£1100	Angus x	21 mnths	Mrs Y Langton, Aldercar
£1280	B Blue x	18-22 mnths	CF Edge & Partners, Alsop
£1000	Hfd x	21 mnths	Leasows Partners, Uttoxeter
£1270	Lim x	24-25 mnths	MT Sweetmore, Earl Sterndale
£920	Holst	23 mnths	Hall Partners, Litton
£1520	Lim x	25 mnths	DJ Renshaw, Ashbourne
£1490	Lim x	26 mnths	DJ Renshaw, Ashbourne
£960	B Blue x	23 mnths	A Hoggarth, Bamford
£1415	Angus x	27 mnths	C Bannister, Colton

147 Heifers ave £973

A wonderful show of heifers with several large consignments allowing useful bunches of 6-8 animals to be assembled. These sold exceptionally well as the following prices demonstrate.

Typical Prices:

£700	Sim x	14 mnths	R Parker, Leek
£1060	Lim x	16 mnths	PT Chadfield, Marston
£800	Sim x	11-14 mnths	R Henshall, Chinley
£840	Hfd x	15-16 mnths	JE & GE Mills, Stanton by Dale
£1010	B Blue x	19-20 mnths	Hawksworth Farmers, Shardlow
£1075	Char x	18-20 mnths	Hawksworth Farmers, Shardlow
£1135	B Blue x	15-16 mnths	P Wood, Wirksworth
£890	B Blue x	19-20 mnths	P & N Allen, Uttoxeter
£1310	B Blue x	15-16 mnths	P Wood, Wirksworth
£1210	Angus x	24-25 mnths	P Wood, Wirksworth
£990	B Blue x	23-25 mnths	S Tudor, Kingsley
£1205	B Blue x	18-19 mnths	H Young, Peak Forest
£1290	Lim x	24 mnths	JW & RG Ede, Youlgreave
£1190	Lim x	21 mnths	SW Frith, Thorpe
£1180	Lim x	33 mnths	AW Gilman & Son, Wetton
£1075	B Blue x	17-18 mnths	GS & L Wheeldon, Atlow
£950	B Blue x	21 mnths	Miss CM Carnwell, Dilhorne
£985	Hfd x	24-28 mnths	Miss CM Carnwell, Dilhorne
£1040	Angus x	21-22 mnths	Miss Y Langton, Aldercar
£1145	B Blue x	23-24 mnths	G White & Partners, Ilam
£1060	Angus x	21 mnths	Leasows Partners, Uttoxeter
£980	Lim x	24 mnths	D & A Dickinson, Bradbourne
£1095	Hfd x	21-23 mnths	RD & SR Furness, Wheston

50 CALVES (Auctioneer Mark Elliott)

Calf trade today strong from start to finish with several purchasers going home without filling their orders.

The best continentals particularly good to sell but a wonderful British Blue bull calf stole the limelight to top the day at £472 for Furness & Taylor at Wormhill. The best 3 Blue bulls averaged £428.



Natives just as good to sell with Hereford bulls for Philip Brandrick at Fole to £330, Friesian bulls from the Fotherby Family to £246 and Angus bulls from the Hitches of Stainsby to £295. Best Native heifers regularly £165 - £230 per head.

Bulls

B Blue x	£472.00	Furness & Taylor, Wormhill
B Blue x	£412.00	JF Hayes, Shottle
B Blue x	£400.00	WJ Adams & Son, Mackworth
Hfd	£330.00	JW Brandrick & Sons, Fole
Lim	£304.00	JF Hayes, Shottle
AA	£295.00	JS & CE Hitch, Stainsby
Hfd	£290.00	AP Critchlow, Wheston
Sim	£284.00	J Cawser, Uttoxeter
B Blue x	£260.00	WR & W Hayes, Pilsley
Hfd	£252.00	JW Brandrick & Son, Fole

Heifers

B Blue x	£376.00	DR & S Kirby, Eastmoor
B Blue x	£248.00	WJ Adams & Son, Mackworth
B Blue x	£240.00	WR & W Hayes, Pilsley
Hfd	£238.00	JW Brandrick & Son, Fole
Hfd	£234.00	D Fotherby & Sons, Wormhill
Hfd	£220.00	Meadow Place Farms, Youlgreave
B Blue x	£218.00	WJ & DM Madin, Holymoorside
B Blue x	£202.00	GPK Trickett, Rowsley
Hfd	£200.00	AP Critchlow, Wheston
Hfd	£196.00	D Fotherby & Sons, Wormhill

1208 Sheep including 875 Lambs, 322 Ewes & Rams & 11 Store Sheep (Auctioneer Peter Oven)

A total entry of 1208 head of sheep included 875 lambs. Despite trade falling at the end of last week Bakewell once again pulled out all the stops and returned a very good overall average of 230.68p/kg.

Best meated sorts sold in the 240-251p/kg bracket.

Leading Prices: -

36.7kg	239p/kg	JW & H Bale, Sutton on the Hill
37kg	240p/kg	Clark Farms, Ringinglow
37.5kg	242p/kg	J & M Riley, Parsley Hay
38.1kg	239p/kg	MG Mosley & Son, Rivelin
40kg	251p/kg	M Gregory, Peak Forest
41.5kg	241p/kg	M Gregory, Peak Forest
42.2kg	241p/kg	M Gregory, Peak Forest
43.6kg	243p/kg	A & J Gagie, Hilton
44kg	242p/kg	N Cupit, Newark
45kg	246p/kg	Furness & Taylor, Wormhill
46.1kg	232p/kg	S & D Fearn, Wardlow

47.7kg	233p/kg	A Hunter, Hognaston
50.5kg	231p/kg	J & J Mellor, Kniveton

Averages:

Standard	To: 242p/kg	Ave: 228.76p/kg
Medium	To: 251p/kg	Ave: 231.6p/kg
Heavy	To: 233p/kg	Ave: 212.5p/kg
Overweight	To: 232p/kg	Ave: 212.5p/kg

322 Cull Sheep

A better show of 322 Cull Sheep continued in demand with best heavy Texel ewes to £158, Suffolks to £146 and Mules to £110.

Cast Ewes	To: £178	Ave: £105.22
Cast Rams	To: £80	Ave: £70.67