

On Instructions from Mr Richard Green (Retiring)
Genuine Machinery Dispersal



BURNS FARM

CHURCH WARSOP, MANSFIELD, NG20 0RE

2 New Holland Tractors, JCB 536-70 Telehandler
Water Bowser, 6 Trailers, Potato Equipment, Harvester
Grading/Bagging Line, Irrigation Reels and Pump
Machinery, Spares, Workshop Items and Sundries



Friday
18th March 2022
at 10:30am



www.bagshaws.com



GENERAL NOTES

Situation

Burns Farm has excellent national road access via the A60 Worksop to Mansfield Road together with the M1 and A1.

From Worksop travel South on the A60 towards Cuckney and Mansfield and after passing through Cuckney and going down Warsop Hill into Warsop, turn left signposted Medenvale and Budby into Eastlands Lane. Continue 300 yards and take the second right into Manor Road. Continue over the River Meden and at the triangle, turn left with Burns Farm lying immediately on the right adjoining the lane.

From Mansfield pick up the A60 North and after travelling through Spion Kop into Warsop continue through the main town until reaching Oak Garage and Car Sales on the right. Turn right into Hetts Lane and after 200 yards turn immediately left into Burns Lane. Continue down Burns Lane passing Meden School on the left and after the lane goes narrow, continue for approximately 250 yards with Burns Farm lying on the right.

From the A616/A6034 between Ollerton and Worksop at Budby- pick up the Warsop and Medenvale Road. After travelling approximately 2 miles go under the railway bridge into Medenvale and approximately ½ a mile past the Three Lions Public House in Medenvale continue into Church Warsop. After 200 yards turn left into Manor Road and continue over the River Meden and at the triangle turn left with Burns Farm lying immediately on the right adjoining the lane.

‘To the Sale’ and ‘Car Park’ signs will be erected on the morning of the sale.
Please refer to the location map within the catalogue.

Car Park - As sign posted on the sale day.

Post Code – NG20 0RE

Value Added Tax - The vendors are registered for VAT purposes (no. 362 4813 00) and VAT at the standard rate will be charged in addition to the auction price where applicable.

Refreshments - A caterer will be in attendance on the day.

Telephone Number(s) on Sale Day –

**07757 668228
07973 673092**

**Site Phone-Sale Day Only
Mark Elliott**

Viewing and Inspection – 10am-3pm on Thursday 17th March and on sale day from 8.30am onwards.

Cheques/Payments-Payment Is Required On Sale Day

Intending Purchasers not known to the Auctioneers must produce, prior to bidding, an acceptable Banker's reference. Under new regulations introduced by the Banks, such references are now only obtainable by the Bank's customers themselves and have to be obtained by them direct from their Bank and forwarded to us. **Unless an acceptable Banker's Reference is produced Payment is Strictly Cash.** Persons unknown to the Auctioneers and who pay by cheque will have their goods impounded until cheques have cleared. The Auctioneers reserve the right to refuse a bid off any potential unknown customer.

All bidders should note that in many cases video security will be on site.

GENERAL NOTES

Conditions of Sale – Bagshaws usual farm sale conditions of sale shall apply at this sale, copies of which are available from the Town offices or the on site sale office.

Cash – Under the money laundering regulations the auctioneers are unable to accept cash in sums greater than €10,000 (or its Sterling equivalent). Please contact the auctioneers to discuss methods of cash payment prior to the sale.

Commission Bids – The Auctioneers will be pleased to execute written commission bids on behalf of persons unable to attend the sale. For further details please contact Mark Elliott on 07973 673092.

Export Purchasers – All goods must be paid for in pounds sterling (£).

VAT on Export Goods – Under regulations imposed by HM Customs & Excise, the auctioneers must account in a proper manner for VAT on export goods. Therefore, all customers must pay all VAT on the purchase price of goods on sale day. On receipt of all relevant export documentation and bills of lading (which must be received in the prescribed time limits), the auctioneers will then refund relevant VAT sums.

Buyers Premium – No buyers premium will be payable at this sale.

Telehandler Loading Facilities – Telehandler loading facilities will be available on site up until approximately 5.00pm on sale day.

Machine Hours – Machine hours have been taken as at Monday 10th January 2022. These are given for information purposes only and are not guaranteed by the Auctioneers.

Loading

It is the responsibility of the purchaser to arrange for the safe loading & transport of all and any purchases. Bagshaws are under no obligation to provide assistance in loading but on occasion they will do their best to help provided that it is not putting themselves, the purchaser or other people at risk of injury. For large, heavy and unwieldy items, specialist loading and transportation will be required for example bulk bins and tanks.

The decision made by Bagshaws will be final.

Farm Sales Privacy Notice

Under the new GDPR (Data Protection) regulations effective from 25th May 2018, Bagshaws LLP are committed to protecting your personal information. Bagshaws LLP are required to inform you of how the data you have supplied to us will be processed. As you have requested to receive information from Bagshaws LLP regarding our farm/livestock sales, we are informing you that the information we hold on you is as follows; Name*Address*Telephone number*Email address

This information is collected from you when you contact our offices to request information regarding our farm/livestock sales. We will use this information for the sole purpose of providing you with the information you have requested. Your data will not be used for any other purpose nor will it be shared with any third parties. The lawful basis for processing your details is to provide you with the information you have requested. The information we hold on you will be kept for a period of 12 months, after which the information will be deleted from our mailing list. If you wish to update or delete the information we hold for you, please contact olivia.fernihough@bagshaws.com

Auctioneers Main Office – Tel: 01889 562811 www.bagshaws.com

FOREWORD

The dispersal sale at Burns Farm results in the full retirement of Mr Richard Green and many locals will know that the family have farmed the unit for over 100 years.

A vast majority of the machinery and prime movers included in the sale have all been purchased new and have been carefully driven and meticulously maintained throughout their working lives. The **New Holland Tractors** were purchased new locally and serviced by Messrs Platts Harris with the JCB Telehandler also locally sourced from Messrs Sharmans.

The farm has been renowned for growing excellent potatoes, sugar beet and cereal crops with careful attention to detail.

Undoubtedly the two New Holland Tractors will be a star attraction as they have undertaken very little work and are in superb condition.

The **JCB 536-70 Telehandler** has excellent specification and is in very good condition.

There is a wide range of Potato Grading Equipment and Irrigation Kit with the stars in the sections being the **RM Irrigation Engineering Trailed Pump Unit c/w Rovatti 4 Stage Pump** and the **Standen Pearson Enterprise Starflow Trailed Harvester** both of which have been carefully maintained and driven. Attendance at Burns Farm in March is thoroughly recommended to appreciate the items for genuine auction sale.

Health & Safety at Work Act 1974

It is expressly brought to the bidders attention that at the time of sale, items of plant, machinery and equipment may not necessarily comply with the requirements of the Health & Safety at Work Act 1974, and its' associated regulations, governing the use of plant, machinery, and equipment at work.

Whilst Bagshaws take all reasonable steps to ensure the integrity of sale items, or make bidders aware of any known defects, anyone purchasing an item must ensure it is safe, and complies with all relevant regulatory requirements, before it is used in a work environment.

SUNDRIES AND GENERAL EFFECTS

Qnty Scrap
Small Qnty Steel
Large Steel Tank (Enamel Lined)
Set of IH Old Trailed Discs
Various Mesh and Steel
Cast Drain Cover
Various Old Cast Down Pipes
Sheet of Alloy Treadplate
Several Sections Wide Bore Drainage Pipe
Qnty Water Fittings
Various Blue and Other Water Pipe
Small Qnty-Tree Guards
Two-Large Concrete Bollards/Field Entry Barriers
Various Plastic Gutters and Down Pipes
Various Short Profile Roof Sheets
Tarpaulin Sheet
Barrel Of Bitumen
Various Barrow Wheels
Several Wheel Barrows
Sack Truck
Larson Trap
Various Bait Boxes/Traps
Old Vacuum Pump/Motor
Qnty Old Chain
Several Alloy Ladders
Qnty D Links
Several Stop Valve Keys
Set of Drain Rods
Wooden Bench c/w Carpenters Vice
Tool Cabinet

Qnty Sprayer Operator Sundries
Jugs, Funnels, Measuring Vessels etc.

Various Brushes, Shovels, Potato Forks and Hand Tools (In Lots)

Approx. 6 Vehicle Warning Road Signs
Some Self Standing "Mud On Road" etc.

Two-Portek Scatterbird Gas Fired Bird Scarer Guns
Several Swirling Bird Scarers
Three-Sugar Beet Clamp Cover Sheets
6m x 20m

Steel 1000 Litre Bunded Fuel Tank
c/w Pallet Tine Slides

TIMBER, FENCING AND LIVESTOCK ITEMS

Various Telegraph Poles (Up To Over 20ft)
Several Wooden Railway Sleepers
Qty Timber (In Lots)
Various Wooden Stakes
Various Oak Timber
Several Roof Timbers (15ft etc)
Small Qty Hardwood Drying Floor
Qty Ash Rails
Various Full Round and Half Round Stakes
Several Tanalised Straining Posts
Various Barbed Wire
Small Qty Sheep Wire
Several Herus Fencing Feet
Water Trough
Qty Galvanised Gates (In Lots)
Various Heavy Duty Steel Gates (In Lots)

WORKSHOP ITEMS, TRACTOR SUNDRIES AND SPARES

Wooden Bench
Two-12 Volt Mini Transfer Pumps
Unused Electric Circuit Board Box
Ad Blue Barrel c/w Pump
Vice
Qty Ratchet Straps
Several Straps
Lifting Chain
Several Tow Chains
Qty Long Heavy Duty Threaded Bolts
Various Heavy Duty Wheel Braces
Heavy Duty Steel Bench (Up To 9ft)
Heavy Duty Workshop Bench c/w Vice
Various Nuts and Bolts (In Lots)
Gas Poker c/w Bottle
Oxford 3 Phase Oil Cooled Welder
Sealey 10 Ton Trolley Jack
Two-15 Ton Ratchet Jacks
Kongskilde K40C Diesel Fired Single Phase Space Heater
Thermobile Diesel Fired Single Phase Space Heater
Kongskilde Diesel Fired Single Phase Space Heater
Several 3 Phase and Single Phase Extension Cables
Two-Sealey 100 Litre Single Phase Workshop Compressors
Single Phase Tripod Light
Stihl Single Phase Industrial Vacuum
Jonsered Turbo Petrol Chainsaw

WORKSHOP ITEMS, TRACTOR SUNDRIES AND SPARES CONTINUED

Ehrle HD623 Diesel Fired Single Phase Hot Water Washer Unit c/w Top Lance Reel

Two-12 Volt Batteries

Set of Bolt Croppers

Several Sets of Stilsons

Set of Allen Keys

Various Drill Bits

Several G Clamps and Engineers Clamps

Various Saws and Hawksaws

Tools to Include; Pliers, Screw Drivers, Punches etc.

Several Hammers and Bars

Various Spanners (In Lots)

¾ Drive Socket Set

Draper Single Phase Angle Grinder

Various Sprayer Intake/Bowser Flexi Pipes (Some Little Used)

Old Trailer Shoe

Bolt On Clevis Hitch

Large Qnty Tractor Pins, Balls etc (In Lots)

Qnty Oil Filters (JCB and New Holland)

Various Hydraulic Pipes

Qnty Hydraulic Fittings

Qnty Unused New Holland Lower Link Ball Pull Chains

Trailer Lighting Board

Various Vehicle Bulbs

Qnty Drive Belts

Several Drive Chains

Various Ford Front Slab Weights (Believed Ex 5000)

9 Hole Drawbar

Several Beet Lifter 5 Hole Drawbars

Qnty Hardi Sprayer Parts

Various New Holland Sundry Parts

Qnty Spring Tines

Qnty Cultivator Points and Wearing Parts

Various Todd Beet Cleaner Spares

Various New Bearings

Four-Steel Subsoiler Depth Wheels

Various Wheels and Tyres (In Lots)

8 Stud Spare Wheel c/w 355/60-18 Tyre

6 Stud Spare Wheel c/w 11.5/80-15.3 Tyre

10 Stud Spare Wheel c/w 22.5 LGP TracGrip Tyre

Several Trailer Cover Sheets and Tarpaulins (In Lots-Some Little Used)

Various Grease

Several Grease Guns

Part Barrel 15W-40 High Performance Oil c/w Pump

Part Barrel Ambra Multi G SAE 10W-30 Oil c/w Pump

Part Drum of MEP 460 Power Harrow Gearbox Oil

Various JCB Ultraperformance Oils (In Lots)

Qnty Gear Oil

Drum of Unitek 10W-40 Oil









POTATO STORE EQUIPMENT, BELT ELEVATORS, GRADER, STITCHERS ETC

Draper 2000 kg Pallet Pump Truck
Clarke 2500kg Pallet Pump Truck
Jungheinrich Wide Frame Pallet Pump Truck
Pallet Pump Truck
Tong Steel Tip Skip

Fyson FE85 Belt Elevator
3 Phase, Wide Infill Hopper
8 Ft Belt Extension c/w Hyd Ram Underfold
Cleated Belt, No Fe85-14A

Swift Lift Extendo Belt Elevator
3 Phase, Cleated Belt, Vari Speed
Retractable Drawbar, Safe Down Extension
Oscillating Power Slew Wheels
Non Driven Rear Wheels
Very Good Condition

Tong 3B Bulker Grader Unit
Single Phase, Single Screen, Wide Bulk In Tip End Hopper
Retractable Drawbar, Single Axle
Narrow Waste Belt, Second Wide Belt Bellow Screen
Vari Speed Hopper and Vari Speed Pick Off
Top Picking Area c/w Lights Over

Tong 825 Weigher Unit
Trolley Wheels, 3 Phase, No 2003 5336

Morray 3 Phase V Track Paper Bag Presentation Belt
Vari Height Legs
c/w Morray Belyne Paper Bag Sack Top Control/Clapper
M850 Model – SA-A503

Newlong 1 Phase Stitcher Unit (2006)
Variable Height Stand

Morray 3 Phase Uplift Paper Bag Belt
Approx. 6FT, Adjustable Legs

Wide Sealed Bag Roller Table
Approx. 4ft, Adjustable Legs

Tong Single Phase Brusher Unit
Approx. 6Ft, Trolley Wheels, Driven Roller At One End

Several Wooden Pickers Bench Steps
Approx. 15-Potato Top Quilts
(In Lots-Up To 40ft Long)

IRRIGATION EQUIPMENT, PIPES AND REELS

Various Farrow And Other Old Alloy Fittings (In Lots)
Two-Big Gun-Rain Gun Top Nozzles
Several Pump Intake Filters
Various Suction Coupling Pipes c/w End Filters (In Lots)
Several 5 Inch Flexi Suction Pipes
Various 5 Inch Lay Flat Pipes c/w Fittings
Qty 5 Inch Field Hydrants (Majority By Wright Rain)
Water Meter

Large Qty Wright Rain Fittings (In Lots)

To Include 5 Inch Bends, T Pieces
Reducers, Field Hydrants Etc

Qty 4 Inch Alloy Irrigation Pipes
20ft and 30ft (In Lots)

Qty 10 Metre Irrigation Pipes

5 Inch Alloy, By Wright Rain, TVF etc (In Lots)

Irrifrance 110/400 Optima Irrigation Reel

Galvanised Frame, Hyd Rear Legs
6 Stud Axle c/w 11.5/30 - 15.3 Tyres
Full Controls c/w Solar Panel
4 Wheel Galvanised Gun Trolley
No 31 IT 0059

Irrifrance 110/400 Optima Irrigation Reel

Galvanised Frame, Hyd Rear Legs
6 Stud Axle c/w 400/60 – 15.5 Tyres
Full Controls c/w Solar Panel
4 Wheel Galvanised Gun Trolley
No 31 IT 0199

2006 Model, New Hose 2019

Briggs 110/470 Twin Axle Irrigation Reel

Galvanised Frame, Hyd Rear Legs
6 Stud Axles c/w 400/60 – 15.5 Tyres
Full Controls c/w Solar Panel
VR5 – Vario Rain
2014 Model – No E34414
Purchased April 2014

Two – Galvanised Mounted Reel Puller Frames
3 Jaw Positions On Each

MOBILE PUMP UNIT

Mobile RM Irrigation Engineering Pump Unit

Integral Fuel Tank, Lockable Side Panels
Noise Reduction, Full Controls, Idro Map
Twin Rear Jacks, Single Front Jack
Swivel Ring Hitch, 12 Volt Rear Inspection Light
JCB 4 Cylinder Engine

Rovatti 4 Stage Pump

Cool Water Motor Heat Exchanger (No Engine Fan)

Twin Reel Powering High Capacity
Oil Regularly Changed Every 400 Hours

5464 Work Hours

IMPLEMENTS AND MACHINERY

Zuidberg 900kg Front Weight Block

c/w Front Jaw

Stocks Fan Jet 12 Volt Pellet Applicator

Suton 2.3 Metre Galvanised Mounted Brush

Hyd Driven, Twin Rear Jockey Wheels
Model No ECO230

Very Good Condition

Two – Small Edlington Triple Cambridge Rolls

Set Of Edlington Hydraulic Folding Ring Rolls

Hyd Adjusting Pre Tine Paddles
6 Stud Wheels c/w 11.5/80 – 15.3 Tyres

Jaguar 2.5 Metre Mounted Flail Topper

Italian AGIP PAL250 Model
Hyd Offset Headstock, 1000RPM Input
Rear Base Roller

Amazona ZA-V 3200 Mounted Twin Disc Fertiliser Spreader

Profis-Tronic Model c/w Amatron Controls
540 RPM Input, Plastic Cover
Border Control, Full Lights
2015 Model

Very Good Condition

Kongsilde Mounted Inter Row Weeder/Hoe

6 Row Model

Kverneland Turbo II Mounted Stubble Cultivator

15 Tine Model, Rear Mini Discs
Wide Rear Crumbler

IMPLEMENTS AND MACHINERY CONTINUED

Cousins Hydraulic Folding Mounted Pig Tail Cultivator

4 Pneumatic Depth Wheels, 28 Tine Total

12 Centre, 8 Tines Each Wing

2016 Model – Very Good Condition

Cousins Mounted Ridger

RDG 3 RFT Model

Kuhn HR3003 Power Harrow

1000 RPM Gearbox, Q Fit Tines

Rear Maxi Packer

2005 Model

Very Good Condition

Maschio SC300 Rotavator

1000RPM Input, Wide Rear Crumbler

2013 Model – Very Good Condition

Howard Mounted Bed Tiller

80 Inch Model, 540 RPM Input

3 Pot Microband Applicator c/w Land Drive Metering Wheel

Reekie Space Setter, Mounted 2 Row Potato Planter

Hopper Extension, Electric Controls

Microband Applicator c/w Land Drive Metering Wheel

Kverneland/Accord 6 Metre D V Mounted Air Drill

Hyd Fold Behind Frame, Disc Coulters

Plastic Hopper Cover, Following Tines

Tramline Kit, Bout Markers

Road Lights, 2012 Model

Good Order

PEARSON TRAILED HARVESTER AND BEET CLEANER

Terry Johnson/Todd Beet Cleaner

Lister/Petter 12 Volt Start Diesel Engine

Covered In Pick Off Bay, c/w 12 Volt Light Over

6 Stud Wheels, Hyd Ram Loader Arm Lift

No 944304 – Recently Used

Standen Pearson Enterprise Starflow Trailed Harvester

540 RPM Input, Full Elec Controls

Self-Levelling, Driven Steerable Axle, Oscillator, Star Separator

Telescopic Axle, Auto Depth Control

Full Rear Covered Pick Off Position

Vari Speed Feed To Pick Off Table

Dual Side Pedestrian Steps

2007 Model – No 282-**Very Good Condition**

TRAILERS AND BOWSER

Single Axle Bale Trailer

Wooden Floor, Approx 24ft
Front And Rear Slot In Bale Ladders

Tye Single Axle Tipping Trailer

Wooden Drop Sides, Grain Extensions
4½ Ton, 5 Stud Wheels
Rear Grain Chute
Owned New – Good Original Condition

Armstrong And Holmes 10 Ton Tandem Axle Tipping Trailer

Monocoque Body, Hyd Rear Door c/w Grain Chute
Narrow Front Visibility Grill
8 Stud Wheels c/w 340/65 – R18 Tyres
Hyd Brakes, Road Lights
Very Good Order

Armstrong And Holmes - 10 Ton Tandem Axle Tipping Trailer

Monocoque Body, Hyd Rear Door c/w Grain Chute
Full Width Visibility Grill
8 Stud Wheels c/w 340/65 – R18 Tyres
Hyd Brakes, Road Lights
Very Good Order

Ken Wootton 10 Ton Tandem Axle Tipping Trailer

Rootcrop Model, Monocoque Body
Small Front Window, Hyd Rear Door
8 Stud Rims c/w 340/165 – R18 Tyres
Hyd Brakes, Road Lights
Very Good Order

A S Marston 14 Ton Tandem Axle Tipping Trailer

Heavy Duty Monocoque Body
Full Width Front Mesh/Window
Hyd Rear Door, Front Ladder
Sprung Drawbar, Rear Beacon
10 Stud Axles c/w 560/45 – R22.5 Tyres
Steel Belted BKT Ridemax Flotations
Hyd Brakes, Road Lights
Very Good Condition

Hutchinson Engineering Twin Axle Water Bowser

Sprung Drawbar, Integral Honda GX160 Pump
HES WB 210 Model, 15,000 Litre Capacity
Ring Hitch, Front Pallet Frame c/w Tie Downs
Twin Lockable Steel Side Lockers
10 Stud Commercial Axles c/w 385/65-22.5 Tyres
Hyd Brakes, Road Lights
Very Good Condition

JCB TELEHANDLER AND ATTACHMENTS

JCB 536-70 Agri Super Telehandler

T4 IV Series, Side Engine
Air Con, Air Seat, Reverse Fan
Cone And Pin Headstock c/w Hyd Pin Locking
40 KPH, Rear Hitch, Ad Blue
Pallet Tines, Boom Lights
460/70- R24 Michelin Tyres
2554 Hours
Reg No FV17 NWK
Owned From New – Very Good Condition

X Form, Rehandling Bucket (Approx. 7ft)

Cherry Rootcrop Bucket (Approx. 8ft)

Cherry Twin Arm Bag Lift

Grays Single Tine Bale Spike

Twin Tine Bale Spike

Ex Sanderson Bucket (Cone and Pin)

Ex Sanderson Twin Ram, 8 Tine FYM Grab (Cone and Pin)

Hall Engineering Man Cage (Pallet Tine Slides)

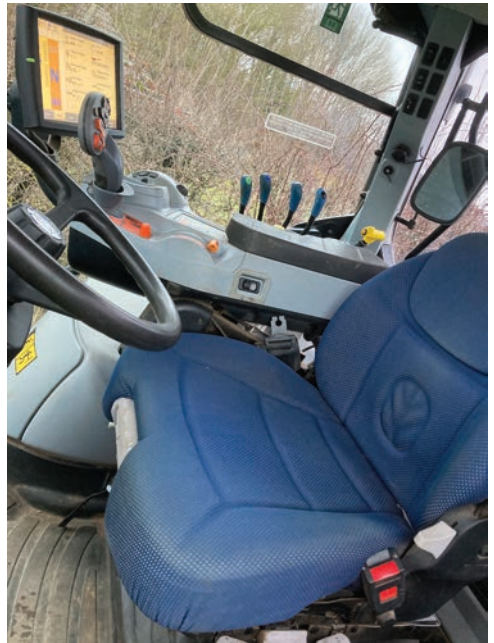


NEW HOLLAND TRACTOR AND WHEEL EQUIPMENT

New Holland T 6.175 4WD

Air Con, Air Seat, Viz Roof
Front And Cab Suspension
40 KPH Vario Dynamic Command
Buddy Seat, 4 Manual Spools
3 Speed PTO, Power Out Hitch
IV Screen Monitor, Front Fenders
Ad Blue, Twin Beacons
Dual Stage Electric Mirrors
17 Front Slab Weights c/w Centre Jaw
480/65 – R28 Front Tyres
600/65 – R38 Rear Tyres
1248 Hours
Reg No FX19 BSV
Owned From New – Excellent Condition

Set of 4 Row Crop Wheels
c/w New Holland 8 Stud, Bolt In Centres
46 Inch Rears, 32 Inch Fronts



NEW HOLLAND TRACTOR

New Holland T 7.230 4WD

Air Con, Air Seat, Viz roof
Front And Cab Suspension
40 KPH, Range Command
Buddy Seat, 4 Manual Spools
540 And 1000 RPM PTO
Sauerman Power Out Hitch
Full RTK Trimble Auto Guidance
Ad Blue, Twin Beacons, Front Fenders
Twin Section Mirrors
1000kg Front Weight Block
420/85 – R30 Front Tyres
520/85 – R24 Rear Tyres
2046 Hours
Reg No FX18 BXA
Owned From New – Excellent Condition



DIESEL TANK, IN SITU BARRIERS AND GRAIN EQUIPMENT

Various Grain Sampling Spears

Two – Temperature Probes

Protimeter Battery Powered Grain Moisture Meter

c/w Grinder and Case

Martin Lishman 3 Phase Grain Aeration Fan c/w Spear

Christy – Norris Vintage 3 Phase Hammer Mill

Steel Central Grain Store Blower/Dryer Main Duct

6Ft 8 Inch, 75Ft Long

Woods Heavy Duty 3 Phase Aeration Fan (Believed 50HP)

Large Qnty Galvanised Steel Above Ground Ducts (In Lots)

20ft Steel Storage Container

Twin Barn Doors, Lockable

Good Timber Floor

Titan FM5000 Plastic Bunded Fuel Station

1 Phase Pump, Pipe, Gun

Lockable Front Door

Six – 15 Ft Galvanised 10 Place Cattle Barriers

Diagonal Bars, Slot On Troughs

Variable Height Steel Side Plates

Two – Galvanised Water Troughs

HAY, STRAW AND FERTILIZER

1.2 Tons 16/16/16 Fertilizer

2.4 Tons Yara Beta Sulphur Fertilizer

Approx. 400 Bales Conventional Barley Straw

Approx. 200 Bales Conventional Hay

All Barn Stored

Removal Long Stop Dates-Will Be a Short Period

Full Details Announced at Time of Sale

MOWERS, STONE TROUGHS, NON VAT AND COLLECTABLE ITEMS

Old Mounted Pea Rake Frame
Old Steel Former Parachute Boxes
Various Hay Knives

Approx. 10-56 lb Weights

Set of Balance Scales and Set of Avery Balance Scales
Long Sawing Stand
Old Garden Roller
Various Dressed Stone
Garden Hose c/w Reel
Small Fabricated Poultry Trough
Old Bull Mask
Galvanised Buckets and Mop Bucket
Set of Old School Wooden Lockers
Set of Wooden Shelves
Set of Step Ladders
Old Hand Cream Separator
Wooden Linen Box
Several Tin Trunks and Dolly Tubs
Various Small Tin Boxes
Several Old Metal/Alloy Milk Crates
Assorted Antique Glass Milk Bottles
Various Old Glass Light Covers
4ft Garden Table c/w 4 Chairs
Several Signs-Including Alfa Laval
Old Colliery Swimming Club Sign

Original Lions Maid Ice Cream Sign

Single Side, Metal, Nearly 6ft Wide

3ft Stone Trough

5ft Stone Trough

Stone Grinding Wheel

Small Stone Trough (Boot Wash Trough)

Stihl FS 240C Petrol Strimmer

Little Used-c/w Spare Heads/Cord

Mountfield 450 Rotary Mower

Power Driven, Briggs and Stratton Engine

Westwood T60 Ride On Mower

Hydrostatic, 12 Volt Start
Kawasaki FS481V Petrol Engine
Mid Deck, Mulch Facility, Rear Collector

Approx. 4 Years Old-Little Used

Two-Four Drawer Filing Cabinets

Good Order c/w Keys

Cylinder Roll Top Desk c/w Side Drawers Each Side

Internal Pigeon Holes, Believed Mahogany
3 Outside Drawers Per Side, 110cm Wide
c/w Captains Office Chair-All Very Good Order

INCLUDED BY PERMISSION

Mitsubishi Shogun 3 Door Equippe D1D

Alloys, Tow Ball, 5 Speed Manual, In Blue
94,600 Miles, Full MOT
55 Plate

Fertilizer Tank

Several Tractor Front Weight Blocks, Details on Sale Day

Large Bucket (Fits Cat Loader)

4 In 1 Bucket Brackets (Fits Cat Loader)

Marshall Single Axle Vacuum Tanker

Rear Hydraulic Valve

Mounted 3 Metre Heavy Cultivator

11 Leg Model, Adjustable Depth Wheels

Following Tines

Lemken Euro Pal 8 Five Furrow Reversible Plough

2015 Model, Hyd Front Furrow

Pneumatic Land Wheel, Good Points and Moleboard

Mounted Deep Leg Subsoiler

12 Sumo Legs, Rear Depth Wheels

End Tow Kit c/w Hyd Drawbar and Upfold End Wheel

Grimme CS 170 Destoner

Variable Stars/Discs

2015 Model, 35mm Main Webb, Variable Speed, Scrubber Web

Share Around 50% Worn, Elec Controls, Variable Stars

Grimme CS 170 Destoner

Multi Web/Discs

2016 Model

40mm Intake Web and 35mm Main Web

Variable Speed Scrubber Web c/w Forward and Reverse

Elec Control, Tyres Are 80%

Grimme CS 170 Destoner

Discs, Shares, Stars and Webs

2018 Model

40mm Intake Web and 35mm Main Web

Variable Speed Scrubber Web c/w Forward and Reverse

Elec Control, Tyres Are 80%

Grimme CS 170 Destoner

Shares and Webs

2016 Model

35mm Main Web

Variable Speed Scrubber Web c/w Forward and Reverse

Elec Control, Tyres Are 50%

INCLUDED BY PERMISSION CONTINUED

Grimme CS 1700 Destoner

Discs, Shares and Stars

2007 Model, 35mm Main Web, Elec Controls

Mounted Ferrag 12 Row Small Seed/Carrot Drill

Spacing Around 36cm c/w Granular Applicator

Griffith Elder Area Box, Elec Controls

3 Top Hoppers, New Rotors, New Electronic Clutch

24 Discs c/w 80 Holes Per Disc

Twin Axle Low Loader Trailer

Harrington Generators Mobile 15KVA Diesel Generator

Kubota 4 Cylinder Engine, Water Cooled, Steel Hood

Shows 441 Hours, Three 16AMP Single Phase Plugs Also

32 AMP, Three Phase Outlet

BOM Feed Auger Bucket

Three- Javelin Irrigation Reels

Bale Squeezer

Honda Ride On Petrol Mower

Lely 4 Metre Polymat Drill

Hopper Cover and New Control Box

Kuhn Primor Trailed Straw Chopper

Giraffe Chute, Elec Controls

CTM Beet Cleaner

Hyd Drive, Single Axle c/w End Drawbar, Pick Off Table

Ifor Williams 12ft Twin Axle Flat Trailer

Ball Hitch, 5 Stud Wheels, 5 ½ ft Wide-Good Order

Tong 16ft 3 Phase Conveyor

High Level Legs, 2ft Wide

Cleated Bottom Belt, Mid Section Soil Removal Discs-Good Order

Trailed 56 Bale Single Axle Bale Carrier

Scanstone 5215- 5 Webber-WDH Destoner Unit

540 RPM Input, Full Elec Controls

Steering Axle, Auto Levelling Axle

32/32/28/28/28 Webs, 1.8m Bed Width, Road Lights

Side Work Lights and Extra LED Lights

Auto Share Depth, 340/80-R20 Tyres

2012 Model-Serial No 432

Scanstone 5215- 5 Webber-WDH Destoner Unit

540 RPM Input, Full Elec Controls

Steering Axle, Auto Levelling Axle

32/32/28/28/28 Webs, 1.8m Bed Width, Road Lights

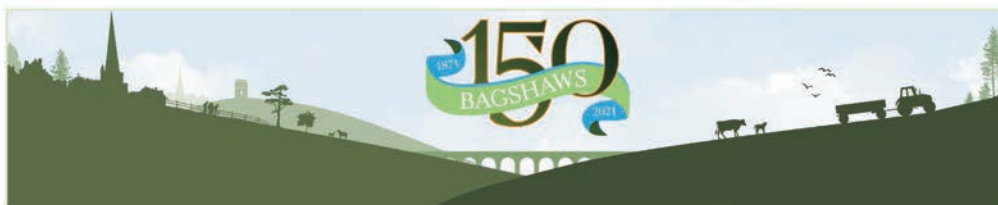
Side Work Lights and Extra LED Lights

Auto Share Depth, 340/80-R20 Tyres

2013 Model-Serial No 489

Several Irrifrance and Kaskad Irrigation Equipment

Three-Diesel Pump Engines



Professional Services

Valuations



We can offer a valuation service in respect of a range of residential, agricultural, equestrian and rural property.

Compensation



We have a wealth of expertise representing both landowners and occupiers through the whole process of compulsory purchase

Landlord & Tenant Matters



As Chartered Surveyors, we have considerable experience in all Landlord and Tenant matters.

Planning & Development



We provide a planning service for rural, commercial and agricultural developments.

Finance



Bagshaws are proud to work with AMC the leading supplier of long-term funding for the agricultural sector.

Basic Payment



BPS is the main rural payment for farmers and landowners. With offices in both Staffordshire and Derbyshire, we are ideally placed to help farmers in our region.

Telecoms



Bagshaws has considerable in-house expertise in a variety of telecommunications matters.

Land & Estate Management



We are able to offer advice on an individual basis or as a full property service for the day to day management of land and estates.

Mapping



Utilising the latest technology, we have access to the most up to date Ordnance Survey Plans and can provide scale plans.

Woodland & Forestry Management



With considerable experience and knowledge in the forestry and woodland industry, our specialist team offers a range of professional management.

Expert Witness



Expert witnesses are called upon to help resolve disputes between parties on land and property related matters.

Farm Office Services



Helping with a huge range of the administrative side of farming, from Red Tractor Assurance to cross compliance and record keeping.

