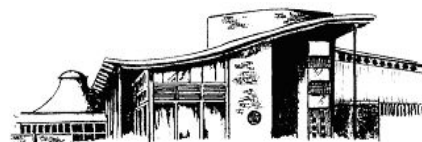


# STORE CATTLE

11am



**MONDAY 26<sup>th</sup> September 2022**

**5 Cows & Calves, 1 in Calf Cow,  
6 Feeding Bulls, 6 Feeding Cows & 537 Steers & Heifers**

***WE ARE AT FULL CAPACITY! PLEASE DO NOT BRING ANY  
UN-ENTERED STORE CATTLE WITHOUT SPEAKING TO  
ALASTAIR SNEDDON FIRST, CALL 07973 982441***



### **Breeding Cattle**

|                              |   |
|------------------------------|---|
| Thorp Farms, Baslow, F/A     | 2 Ped Shorthorn Cows with Calves<br>BVD Tested      |
| D Chadwick, Kniveton         | 1 Ped Sth Devon cow In Calf to A Angus, 8-9 Weeks   |
| S Harrison, Idridgehay       | 1 Lim Cow & Lim Hfr Calf<br>1 AA Cow & Lim Str Calf |
| TA & DE Spooner, Upper Hulme | 1 Ped Hfd Cow, 34 mnths & Pure Hfd Hfr Calf, 1 mnth |

### **Feeding Bulls**

|                                       |                       |
|---------------------------------------|-----------------------|
| GG & OM Carthy, Barton Under Needwood | 3 Ped Lim, 10-15 Mths |
| R Barlow, Retford                     | 3 BB, 7 mnths         |

### **Feeding Cows**

|                    |           |
|--------------------|-----------|
| S White, Wortley   | 2 A Angus |
| Webster, Ashbourne | 4 Cont    |

### **NAMED SIREs**

For the avoidance of doubt, we will only announce NAMED SIREs if the sire's tag number is printed on the passport, accompanied by the full name of the registered bull.

We will announce SIRE TAG if there is a sire's tag number printed on the passport, but no name of a registered bull. You will appreciate that we do not have time to verify this information.

The details supplied to us on the signed entry form MUST be accurate, DNA tests are regularly carried out and the vendor will be liable for any discrepancies.

### **ALTERATIONS TO PASSPORTS**

Please make best efforts to avoid sending cattle where there is the need to alter the passport because of incorrect sex or breed.

These matters should be corrected before sending stock to market.

### **Store Cattle**

| PEN | LOT NUMBER | VENDOR                                |   |
|-----|------------|---------------------------------------|---|
| 1   | 751-753    | A Mycock, Flagg                       | 2 BB Strs, 5 mnths<br>1 Lim Str, 5 mnths                              |
| 1   | 754-759    | JV Allan, Burton on Trent, F/A        | 5 Holst Strs, 6-8 Mths<br>1 B Blue Str, 6 Mths                        |
| 1   | 760-762    | R Henshall, Chinley                   | 3 Sim Strs, 9 mnths, Suckler Bred                                     |
| 2   | 763        | S Frith, Thorpe                       | 1 Lim Hfr, 5 mnths  |
| 2   | 764-771    | GG & OM Carthy, Barton Under Needwood | 3 Ped Lim Hfr, 10-18 Mths<br>3 Lim Strs, 7 Mths<br>2 Lim Hfrs, 7 Mths |
| 2   | 772-773    | R Booth, Oakerthorpe                  | 1 Hfd Str, 9 mnths<br>1 Hfd Hfr, 9 mnths                              |
| 3   | 774-781    | D & JL Smith, Pilsley                 | 5 Sim x Strs/Hfrs, 8-9 mnths<br>3 Sim x Strs/Hfrs, 12 mnths           |
| 3   | 782-784    | M Heathcote, Hartington               | 2 Hfd Hfrs, 12 mnths<br>1 Char Hfr, 12 mnths                          |
| 4   | 785-790    | J Smith, Brinsley                     | 4 Here Strs, 10-12 Mths<br>2 Here Hfrs, 11-12 Mths                    |

|              |           |                                     |   |
|--------------|-----------|-------------------------------------|---|
| <b>4</b>     | 791-794   | FG & JR Critchlow, Sheen            | 2 Lim Strs, 13 Mths<br>2 Sim Strs, 11 & 18 Mths   |
| <b>5</b>     | 795-799   | R Beardsley, Morley                 | 5 Lim x Hfrs, 12 mnths  |
| <b>5</b>     | 800-801   | S Harrison, Ildridgehay             | 2 Lim/Blonde Hfrs, 12 mnths   |
| <b>5</b>     | 802-805   | R Hughes, Stanley                   | 4 Hfd Hfrs, 11-12 mnths,<br>Suckler/Homebred  |
| <b>6</b>     | 806-812   | JP & D Helliwell, Oughtibridge      | 7 Char Strs & Hfrs, 10-12 Mths  |
| <b>6</b>     | 813-816   | CJ Stone, Green Fairfield           | 3 Pure Sim Strs, 12 Mths<br>1 Blond x Sim Str, 12 Mths                                  |
| <b>7-8</b>   | 817-836   | M Gregory, Peak Forest              | 20 Cont Strs, 12-14 Mths  |
| <b>9</b>     | 837-838   | T Keegan,                           | 2 A Angus Hfrs, 12 Mths   |
| <b>9</b>     | 839-847   | JG & AW Smith, Ible                 | 5 Blonde x Strs, 12-14 mnths<br>4 Blonde x Hfrs, 12-14 mnths<br>Suckler Bred            |
| <b>10</b>    | 848-853   | W & A Helliwell, Oughtibridge       | 6 Hfd x Strs, 12-15 mnths   |
| <b>10</b>    | 854-858   | MT Wainwright, Poynton, F/A         | 5 Lim Strs & Hfrs, 12-18 Mths   |
| <b>11-13</b> | 859-888   | C & FM Percival, Youlgreave, F/A    | 30 B Blue Strs, 12-14 Mths  |
| <b>14</b>    | 889-898   | Bosworth Bros, Stanley              | 7 Here Strs, 6 Mths, N Sire<br>3 Here Strs, 16 Mths, N Sire                             |
| <b>15</b>    | 899-907   | PA Hall, Ashbourne                  | 7 Lim Strs, 6-16 Mths<br>2 Lim Hfrs, 6-16 Mths  |
| <b>16</b>    | 908-913   | TW & E Gratton, King Sterndale, F/A | 6 Lim Strs & Hfrs, 14 Mths  |
| <b>16</b>    | 914-918   | L Keeton, Matlock                   | 2 A Angus Hfrs, 14-18 Mths, N Sire<br>2 Blond Hfrs, 14-18 Mths<br>1 B Blue Hfr, 16 Mths |
| <b>17</b>    | 919-926   | T Neville, Tansley, F/A             | 8 B Blue Strs, 14 Mths  |
| <b>17</b>    | 927-929   | T Stafford, Ballidon F/A            | 2 BB x Strs, 15 mnths<br>1 BB x Hfr, 15 mnths   |
| <b>18</b>    | 930-935   | S Torr, Tissington F/A              | 6 Lim/BB Strs/Hfrs, 14 mnths  |
| <b>18</b>    | 936-940   | R Cottrill, Bamford, F/A            | 5 Lim Strs & Hfrs, 15-17 Mths   |
| <b>19</b>    | 941-944   | ME Collins, West Hallam             | 2 BB Hfrs, 14-15 mnths<br>1 BB Strs, 15 mnths<br>1 Beef S Horn Str, 14 mnths            |
| <b>19</b>    | 945-952   | TH Mills, Baslow F/A                | 6 Hfd x Strs, 18 mnths, Named Sire<br>1 Sim x Str, 13 mnths<br>1 Lim x Str, 16 mnths    |
| <b>20</b>    | 953-961   | D Bott, Kniveton                    | 9 Here Strs, 14-15 Mths, N Sires<br>Suckler Bred  |
| <b>21</b>    | 962-969   | D Chadwick, Kniveton                | 8 A Angus Hfrs, 16-17 Mths<br>Out Of Ped Sth Devon Cows                                 |
| <b>21-22</b> | 970-974   | LB & AB Thompson, Longnor           | 3 A Angus Strs, 14 Mths, N Sire<br>2 A Angus Hfrs, 14-15 Mths, N Sire                   |
| <b>22</b>    | 975-982   | A Hunter, Ashbourne                 | 8 Hfd x Strs/Hfrs, 15-16 mnths,<br>Named Sire   |
| <b>23</b>    | 983-994   | GM Grindey & Sons, Hartington, F/A  | 6 B Blue Strs, 15-16 Mths<br>6 B Blue Hfrs, 15-16 Mths<br>BVD Tag & Tested              |
| <b>24</b>    | 995-1004  | A Hall, Glossop                     | 5 Char Strs, 16-18 Mths<br>5 Char Hfrs, 16-18 Mths                                      |
| <b>25</b>    | 1005-1015 | T Ollerenshaw, Bolsterstone         | 10 Lim Hfrs, 16-18 mnths<br>1 BB Hfr, 16-18 mnths                                       |
| <b>26</b>    | 1016-1020 | FA & PJ Pilkington, Kniveton, F/A   | 1 Char Str, 11 Mths<br>1 B Blue Str, 17 Mths<br>3 Char Strs, 17 Mths                    |
| <b>26</b>    | 1021-1026 | CE & EN Latham, Sudbury             | 6 Hfd Strs, 18 mnths  |

|              |           |                                     |   |
|--------------|-----------|-------------------------------------|---|
|              |           |                                     |   |
| <b>27</b>    | 1027-1030 | DJ Sowerby, Edale                   | 2 Char Strs, 16-17 Mths<br>2 Char Hfr, 16-17 Mths   |
| <b>27</b>    | 1031-1033 | J Bonsall, Atlow, F/A               | 2 Blue Albion Strs, 18 Mths<br>1 Brown Swiss Str, 18 Mths   |
| <b>27</b>    | 1034-1037 | G Goodall Agri Services             | 1 B Blue Hfr, 17 Mths<br>1 B Blue Str, 15 Mths<br>1 A Angus Hfr, 19 Mths<br>1 Lim Hfr, 25 mths  |
| <b>28</b>    | 1038-1047 | ER & CA Kirby, Tideswell            | 10 Here Strs, 17 Mths, BVD Tested   |
| <b>29-30</b> | 1048-1067 | BD & A Yates & Son, Youghreave      | 20 Lim Strs, 17-18 Mths   |
| <b>31-32</b> | 1068-1087 | JW & RG Ede, Youghreave, F/A        | 20 Cont Strs & Hfrs, 18 Mths  |
| <b>33</b>    | 1088-1095 | JW Handford & Sons, Birch Vale, F/A | 1 Lim Hfr, 18 Mths<br>1 Lim Str, 18 Mths<br>3 B Blue Strs, 15-17 Mths<br>3 B Blue Hfrs, 17-19 Mths  |
| <b>33</b>    | 1096-1098 | GR Cope                             | 3 S Horn Strs, 14, 17 & 29 mnths  |
| <b>34</b>    | 1099-1101 | N & S Pearson, Peak Forest, F/A     | 5 A Angus Strs, 18 Mths   |
| <b>34</b>    | 1102-1104 | C Nash, Dayhills F/A                | 2 Hfd Strs, 15 mnths, Named Sire<br>1 Beef S Horn Hfr, 18 mnths   |
| <b>34</b>    | 1105-1106 | AP Critchlow, Whetton               | 2 Here Hfrs, 19 Mths  |
| <b>35-36</b> | 1107-1122 | RW Richardson, Milwich              | 10 Fries x Mont Strs<br>4 Beef Shorthorn Strs, N Sire<br>1 Fleck Str<br>1 Sim Str<br>2 B Blue Strs, 18-20 Mths  |
| <b>37-39</b> | 1123-1147 | E Surguy, Ashover                   | 2 Here Strs, 19-20 Mths<br>2 Here Hfrs, 19-20 Mths<br>4 A Angus Strs, 13-21 Mths<br>8 A Angus Hfrs, 16-23 Mths<br>1 Beef Shorthorn Str, 11 Mths<br>Mostly Named Sires<br>4 B Blue Strs, 16-17 Mths<br>4 B Blue Hfrs, 14-18 Mths |
| <b>39</b>    | 1148-1151 | J Percival, Flagg                   | 2 A Angus, 16-20 Mths<br>1 Lim, 24 Mths<br>1 Sim, 12 Mths   |
| <b>40</b>    | 1152-1155 | FR Cooper, Wirksworth               | 1 B Blue Str, 19 Mths<br>3 Lim Strs, 19 Mths  |
| <b>40</b>    | 1156-1159 | J & R Pearce, Hollington            | 4 Ped Shorthorn Hfrs, 19 Mths<br>BVD Free & Vac Johnes 1  |
| <b>41</b>    | 1160-1164 | RA Tatlow, Ashbourne                | 4 B Blue Strs, 17-20 Mths<br>1 Mont Str, 20 Mths  |
| <b>41</b>    | 1165-1168 | I Carrington, Kniveton, F/A         | 2 Lim Strs, 21 Mths<br>1 Here Str, 25 Mths, N Sires<br>1 Here Hfr, 26 Mths  |
| <b>42-44</b> | 1169-1198 | Mount Pleasant, Middleton, F/A      | 30 Here & Cont Strs, 20 Mths  |
| <b>45</b>    | 1199-1203 | TR Meakin, Loxley                   | 1 Lim Str, 17 Mths<br>1 A Angus Str, 17 Mths<br>1 A Angus Hfrs, 16 Mths<br>1 B blue Str, 15 Mths<br>1 B Fries Str, 14 Mths  |
| <b>45</b>    | 1204-1206 | GPK Trickett, Rowsley, F/A          | 3 A Angus Strs, 19-20 Mths  |
| <b>46</b>    | 1207-1210 | J Conway, Glossop                   | 4 A Angus Hfrs, 22 Mths   |
| <b>46</b>    | 1211-1213 | CH Leeson & Son, Ipstones, f/A      | 3 B Blue Hfrs, 23 Mths  |

|              |           |                                       |  |
|--------------|-----------|---------------------------------------|--|
| <b>47</b>    | 1214-1224 | J Melland & Son, Pomeroy, F/A         | 6 Fries Strs, 16-22 Mths<br>5 Blond Hfrs, 23-25 Mths<br>BVD Tested         |
| <b>48</b>    | 1225-1232 | R & G Webster, Fenny Bentley          | 5 Hfd Strs, 24 mnths<br>3 Lim Hfrs, 24 mnths                               |
| <b>49</b>    | 1233-1237 | Mrs F Evans & Daughters, Colwich, F/A | 2 Lim Strs<br>1 Lim Hfr<br>1 A Angus Hfr<br>1 Welsh Blk Str, 26-27 Mths    |
| <b>49</b>    | 1238-1240 | RN Wilcockson, Eastmoor               | 3 Sim Strs, 20 mnths   |
| <b>50</b>    | 1241-1244 | W Whitbread, Biggin                   | 2 Hfd Hfrs, 18-20 mnths<br>1 BB Hfr, 27 mnths<br>1 Hfd x Str, 18 mnths     |
| <b>50</b>    | 1245-1248 | WI Fletcher & Son, Sheldon, F/A       | 1 B Blue Str, 23 Mths<br>1 B Blue Hfr, 20 Mths<br>2 Lim Hfrs, 19 Mths      |
| <b>51-52</b> | 1249-1263 | G & R Gould, Elton                    | 15 Cont Strs, 24 mnths   |
| <b>53</b>    | 1264-1269 | JG & AM Spendlove & Son, Belper, F/A  | 6 Here Hfrs, 25 Mths, N Sire   |
| <b>54</b>    | 1270-1274 | N Denniff, Holmesfield                | 5 Here Hfrs, 29-30 Mths, N Sire<br>Homebred                                |
| <b>55</b>    | 1275-1288 | WC & CA & JR Barratt, Combs, F/A      | 10 B Blue Strs, 26 Mths<br>1 Sim Str, 26 Mths<br>3 B Blue Hfrs, 30-33 Mths |

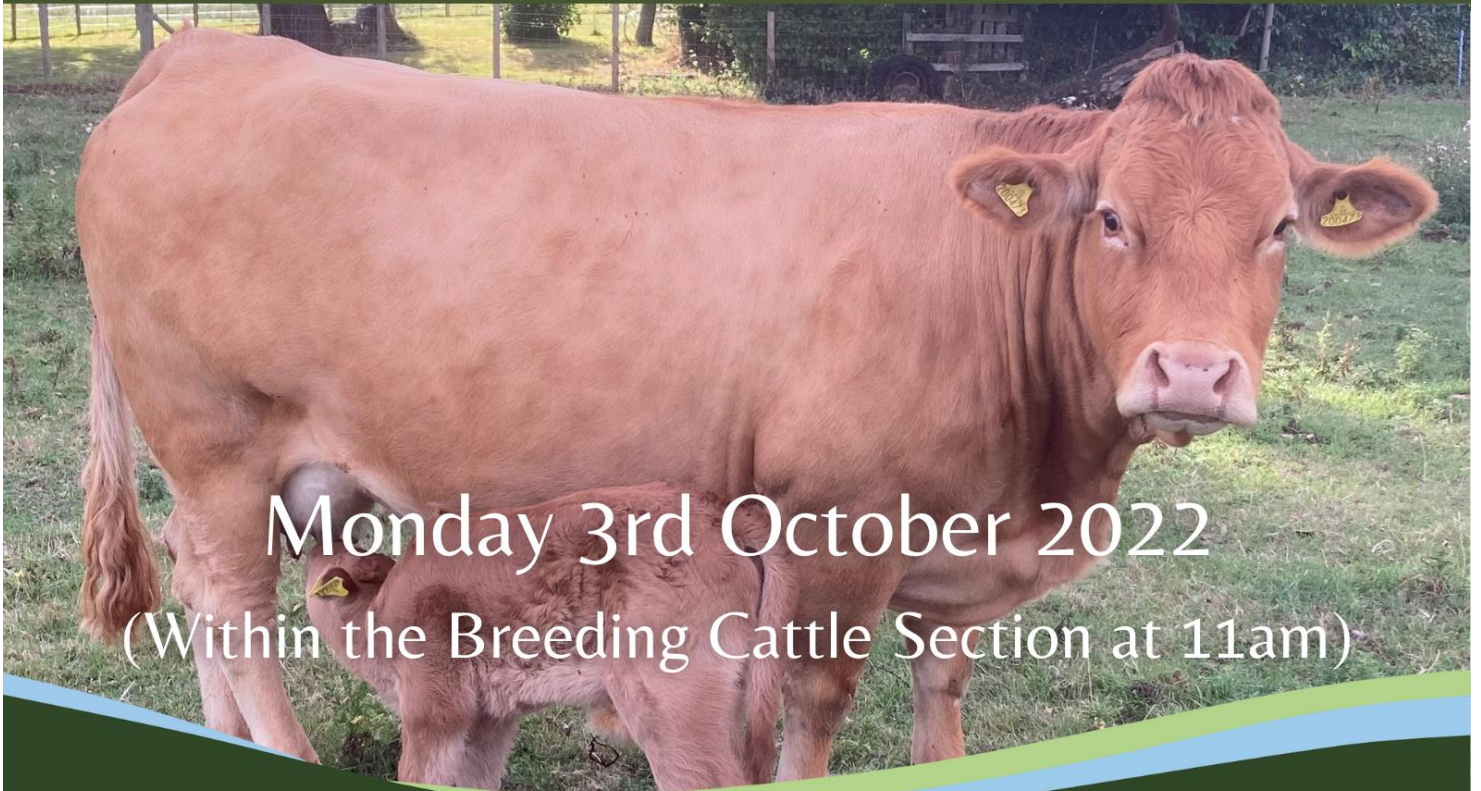




## Bakewell Market

### Dispersal Sale of Ped Limousin and Limousin x Cows

- 1 Ped Limousin Cow & Hfr Calf (May born)
- 3 Ped Limousin Cows In Calf (due Dec/Apr/May)
- 2 Lim x Cows with calves at foot (Summer born)
- 10 Lim x Cows in calf (due Nov-Apr)
- 4 Lim x Hfrs (6-19 mths)
- 3 Lim x Bulls (9-16 mths)



**Monday 3rd October 2022**  
(Within the Breeding Cattle Section at 11am)

Bakewell Market 01629 812777

