



11am

Monday 14th October 2024

4 Cows & Calves, 2 In Calf, 1 Stock Bull

14 Feeding Bulls, 8 Feeding Cows & 375 Steers & Heifers

- Staff are on hand to assist with unloading from 7am in the Cattle section.
- Please make sure Breeding Cattle, Feeding Bulls & Lots 751-1000 are penned for 9am to allow time for paperwork to be processed & the sale to start on time



**Bagshaws operating
Undercover!**

Please keep checking the APHA Interactive Map which can be found on the NFU Bluetongue website:

<https://www.nfuonline.com/updates-and-information/bluetongue-essential-information/>

If your farm is in the Restriction Zone which now includes all of Nottinghamshire, parts of Leicestershire & Northamptonshire you must NOT bring stock to Bakewell Market

Any queries speak to Alastair Sneddon on 07973 982441

Breeding Cattle

		TB Area
D Fretwell, Fenny Bentley F/A	1 Ped Lim Stock Bull, 18 mnths	6 Mths
J Baker, Bradley	2 AA Hfrs PD 4 mnths i/c to Wagyu 2 AA Cows with Wagyu Calves, PD 4 mnths i/c to Wagyu	6 Mths
Pilkington & Sons, Ashbourne F/A	1 B Blue Hfr, 26 mnths with AA Hfr Calf, adopted, N Sire 1 AA Hfr, 28 mnths & AA Hfr Calf, N Sire Served by L Horn	

Feeding Cows

		TB Area
I Boyd, Pilsley	1	12 Mths
Pugh, Pilsley	1	
H Fitzhugh, Heage	6	12 Mths

Feeding Bulls

		TB Area
M Haslam, Cuthorpe	2 Pure Lim, 5-6 Mths	
MJ Adams, Dalbury Lees	9 S Dev/ Horn, 5-9 mnths	6 Mths
RJ WJ Wigley, Middleton	1 B Blue, 5 mnths Suckler/Creep fed	6 Mths
D Smith, High Green	1 Char, 16 mnths	48 Mths
Wildgoose, Holymoorside	1 Hfd, 25 mnths	12 Mths

NAMED SIRE

For the avoidance of doubt, we will only announce NAMED SIREs if the sire's tag number is printed on the passport, accompanied by the full name of the registered bull.

We will announce SIRE TAG if there is a sire's tag number printed on the passport, but no name of a registered bull. You will appreciate that we do not have time to verify this information.

The details supplied to us on the signed entry form MUST be accurate, DNA tests are regularly carried out and the vendor will be liable for any discrepancies.

ALTERATIONS TO PASSPORTS

Please make best efforts to avoid sending cattle where there is the need to alter the passport because of incorrect sex or breed.

These matters should be corrected before sending stock to market.

Store Cattle

PEN	LOT NUMBER	VENDOR		TB Area
1a	751-755	DR & MR Crookes & Sons, Chesterfield, F/A	5 AA/ B Blue Strs, 6 mnths	12 Mths
1	756	M Haslam, Cuthorpe	1 Pure Lim Hfr, 6 Mths	
1	757-765	FA Yates & Co, Alstonefield, F/A	1 Lim Str, 9 Mths 4 A Angus Strs, 9-16 Mths, N Sires 1 Stab Str, 9 Mths 2 Lim Hfrs, 9 Mths 1 A Angus Hfr, 9 Mths, N Sire BVD T&T	
2	766-767	RJ WJ Wigley, Middleton	2 Lim x Strs, 5 mnths, Suckler/creep fed	6 Mths

2	768-774	NC Gregory, Blackwell F/A	4 B Blue Hfrs, 11 mnths 1 B Blue Str, 11 mnths 2 AA Strs, 11 mnths BVD T&T	6 Mths
3	775-776	RP Lawley, Draycott	2 Hfd Str/Hfr, 12 mnths	6 Mths
3	777-784	E Surguy, Ashover	5 A Angus Strs, 13-15 Mths, N Sires 3 A Angus Hfrs, 13-15 Mths, N Sires	6 Mths
4	785-788	OR Jones Ag Services, Staffs	2 Here Strs, 12-13 Mths 2 Here Hfrs, 12-15 Mths	6 Mths
4	789-793	R Edwards, Freehay	5 AA Strs, 13-18 mnths	6 Mths
5	794-796	Ransome Farm, Alport	3 AA Hfrs, 14-15 mnths	6 Mths
5	797-802	JR & DJ Hollingworth, Ockbrook, F/A	6 Beef Shorthorn Strs & Hfrs, 15-16 Mths Suckler Bred	12 Mths
6	803-804	S Jackson, Unstone	2 AA/BB Strs, 14 mnths	12 Mths
6	805-808	W Hague & Son, Bradfield	4 AA Hfrs, 15-16 mnths, N Sire	48 Mths
6	809-810	ED Ironmonger & Son, Bonsall F/A	2 Sim x Hfrs, 12-16 mnths	6 Mths
7-9	811-840	JW Walker & Sons, Tideswell, F/A	30 B Blue, A Angus & Here Strs & Hfrs, 15 Mths	6 Mths
10	841-849	P Hill & Co, Swadlincote F/A	4 AA Strs, 12-16 mnths 3 AA Hfrs, 12-16 mnths Named Sire 2 Lim Hfrs, 12-16 mnths	6 Mths
11	850-852	P Jolliffe, Cotton, F/A	3 Ped Sim Hfrs, 12-18 Mths High Health Herd	6 Mths
11	853-856	Pilkington & Sons, FA	4 B/W Strs, 13-17 mnths	
11	857-859	PW & JA Mansfield, Hyde	2 Hfd Hfrs, 15 mnths 1 AA Hfrs, 15 mnths N Sire	48 Mths
12-13	860-876	GM Williamson, Longnor	11 AA Strs, 12-26 mnths 6 AA Hfrs, 12-23 mnths Named Sire & Suckler bred	6 Mths
13	877-881	AP Moore, Lichfield	5 B Blue x Hfrs, 18 mnths	
14	882-890	D Wright, Parwich	9 Sim/Linc Red Strs/Hfrs, 15 mnths BVD T&T, W Bolus	6 Mths
15	891-896	C Nash, Stone	2 B Blue Hfrs, 15 mnths 1 Lim Str, 16 mnths 3 AA Strs, 17-18 mnths	6 Mths
15	897-900	R Crane, Brailsford	4 Lim Strs & Hfrs, 16 Mths	6 Mths
16	901-902	P Wale, Tansley	1 Mont Str, 16 mnths 1 Sim Str, 16 mnths	
16	903-904	D Langton, Belper	2 Hfd Strs, 16-20 mnths	
16	905	I Williamson, Matlock	1 Lim Str, 17 mnths	6 Mths
16	906-910	W Bradbury, High Needham, F/A	3 Holst Strs, 17-20 Mths 1 B Blue Str, 17 Mths 1 B Blue Hfr, 16 Mths	6 mths
17	911-920	AW Gilman & Sons, Wetton F/A	10 AA/Hfd Strs/Hfrs, 18 mnths Named Sires	6 Mths
18	921-930	AB Bowler, Ashleyhay F/A	9 Lim x Strs, 18 mnths 1 Lim x Hfr, 18 mnths BVD T&T	6 Mths
19-20	931-951	J Hopley Farms Ltd, Newborough F/A	14 B Blue x Hfrs, 23-25 mnths 1 AA Str, 19 mnths 2 Lim Strs, 19 mnths 2 Char Hfrs, 18 mnths 1 Lim Str, 14 mnths 1 AA x Str, 13 mnths	6 Mths

21	952-961	Coumbs Farm, Matlock	4 Sim Strs & Hfrs, 18-30 Mths 2 Here Strs, 6-18 Mths 3 A Angus Strs & Hfrs, 6-18 Mths 1 Lim Str, 6 Mths	6 Mths
22	962-970	E & C Woodward, Coxbench	9 Char Strs, 18 Mths	6 Mths
23-25	971-995	S Rhodes, Sheffield	25 Blond Strs & Hfrs, 18 Mths	48 Mths
26	996-1004	PJ Wheeldon, Buxton	2 Fries Strs, 18 mnths 2 Hfd Strs, 18 mnths 5 AA Strs, 18 mnths	
27	1005-1015	PN Archer, Orton	11 Char Strs & Hfrs, 18-20 Mths	12 Mths
28	1016-1018	A & DJ Gregory, Litton F/A	2 Lim Hfrs, 18 mnths 1 Char Hfr, 18 mnths BVD T&T	6 Mths
28	1019-1024	I Woodward, Duffield	6 Hfd/AA Hfrs, 18-20 mnths	6 Mths
29	1025-1032	Hornsby & Round, Beeley, F/A	8 B Blue Strs & Hfrs, 18-21 Mths BVD Tag & Tested	6 Mths
29	1033-1035	FA & PJ Pilkington & Son, Kniveton	2 Char Strs, 19 mnths 1 AA Hfr, 19 mnths, N Sire	6 Mths
30	1036-1045	M Goodwin, Abbots Bromley, F/A	10 B Blue Strs, 19 Mths	6 Mths
31	1046-1048	W & E Bowler, Wirksworth	3 B Blue Hfrs, 19-20 Mths	6 Mths
31	1049-1054	CC Etches & Son, Tissington, F/A	6 B Blue Strs, 20 Mths	6 Mths
32	1055-1057	R Bennett & Son, Bamford	1 B Blue Str, 20 mnths 2 B Blue Hfrs, 20 mnths	12 Mths
32	1058-1064	T & CJ Hadfield F/A	1 Hfd Str, 22 mnths 1 Hfd Hfr, 17 mnths N Sire 5 B Fries Strs, 14-15 mnths	
33	1065-1068	J Shardlow, Shirland	2 Longhorn Hfrs, 20 Mths 2 Here Strs / Hfrs, 20 Mths	6 Mths
33	1069-1070	Wilshaw & Hine, Swythamley	2 B Blue Strs, 20 mnths	6 Mths
33	1071-1072	J Brough & Son, Rudyard F/A	2 AA x Str/Hfr (twins), 24 mnths ¾ beef bred	6 Mths
34	1073-1082	Campion Bros Ltd, Stretton	9 AA Hfrs, 21-23 mnths 1 B Blue Hfr, 21 mnths	
35	1083-1087	ME Cawser, Sudbury	5 Hfd Hfrs, 22 mnths, N Sire	
35	1088-1092	G & R Pykett Ltd, Cotmanhay	5 Lim x Hfd Hfrs, 24 mnths	6 Mths
36	1093-1099	D Poole & Son, Flagg, F/A	7 B Blue & Lim Strs, 23-24 Mths	6 Mths
36	1100-1102	L Slater & Sons, Winster	3 Lim Hfrs, 14-24 Mths	6 Mths
37	1103-1107	DR & MR Crookes & Sons, Chesterfield, F/A	3 B Blue Hfrs, 24 Mths 2 AA Hfrs, 24 mnths	12 Mths
37	1108-1109	J Price, Kettlethulme	2 Lim / Sim Hfrs, 26 Mths	6 Mths
37	1110-1112	I Boyd, Pilsley	3 Sim Strs, 15-27 Mths	12 mths
38	1113-1117	Leasow Partners, Uttoxeter F/A	2 AA x Hfrs, 25 mnths 1 AA x Str, 25 mnths 1 AA x Str, 28 mnths 1 Sim x Hfr, 23 mnths	6 Mths
38	1118-1122	RH Bunting, Friden	5 Holst Fries Strs, 25-27 mnths	6 Mths
39	1123	R Adams, Alstonefield F/A	1 AA Hfr, 27 mnths	6 Mths
39	1124-1126	T Shally & L Mitchell, Allestree	3 Here Hfrs, 29-30 Mths, N Sires	6 Mths



To Enter
Store & Breeding Cattle
for Monday 21st October
Call our Livestock Team (Option 2)
Before 12 Noon on
Friday 18th October



Animal &
Plant Health
Agency

Bluetongue in cattle

Know the signs

Bluetongue serotype 3 (BTV-3) is circulating on the eastern side of England. The Animal and Plant Health Agency (APHA) and Defra have declared bluetongue zones spanning several counties to help control further spread of the disease. You can find out more and check whether you are in a bluetongue zone by visiting gov.uk/bluetongue.

You can play a part in helping to stop bluetongue spreading by checking your animals for clinical signs, only moving animals if essential.

Clinical signs to look out for in cattle

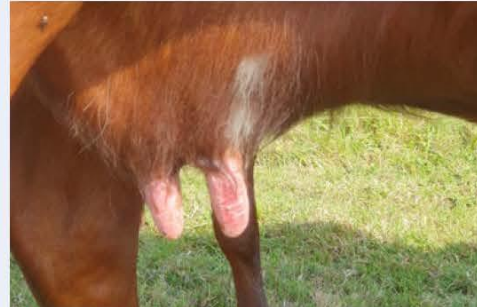
- lethargy
- crusting and erosions around the nostrils and muzzle
- conjunctivitis and excessive tear staining
- redness of the mouth, eyes, nose
- reddening of the skin above the hoof and between the cleats
- nasal discharge
- reddening and erosions on the teats
- fever
- milk drop
- not eating
- abortion, foetal deformities and stillbirths

Adult cattle may be infectious for several weeks while showing little or no sign of disease. They are often the preferred host for biting midges (the vector of bluetongue virus).

Clinical signs in calves

Calves can become infected with bluetongue virus before birth if the mother is infected while pregnant. Signs of infection include:

- calves born small, weak, deformed or blind
- death of calves within a few days of birth
- stillbirths



Reddening and erosions on the teats

© A Allen



Red interdigital cleft



Ulceration in nostrils



Crusting around nostril

© A Allen

Find out more information and how to report bluetongue by visiting www.gov.uk/bluetongue

