



## 11am

### Monday 21<sup>st</sup> October 2024

4 Cows & Calves, 4 In Calf  
9 Feeding Bulls & 313 Steers & Heifers

- Staff are on hand to assist with unloading from 7am in the Cattle section.
- Please make sure Breeding Cattle, Feeding Bulls & Lots 751-1000 are penned for 9am to allow time for paperwork to be processed & the sale to start on time



**Pen 13-14**

**Please keep checking the APHA Interactive Map which can be found on the NFU Bluetongue website:**

**<https://www.nfuonline.com/updates-and-information/bluetongue-essential-information/>**

**If your farm is in the Restriction Zone which now includes all of Nottinghamshire, parts of Leicestershire & Northamptonshire you must NOT bring stock to Bakewell Market**

**Any queries speak to Alastair Sneddon on 07973 982441**

## **Breeding Cattle**

		<b>TB Area</b>
NH Denniff, Holmesfield	3 Here PD In Calf To Ped Luing, 60-70 Days 1 Luing Hfr PD In Calf To Ped Luing, 60-70 Days Home Bred	12 Mths
T Lee, Ripley	1 Sim Cow & Char Calf 1 Lim Cow & Char Calf 1 Hfd Cow & Char Calf 1 Cont Cow & twin Char Calves	6 Mths

## **Feeding Bulls**

		<b>TB Area</b>
T Jackson, Ashbourne	1 Here, 14 Mths, N Sire	6 Mths
A Webster, Southam	6 Sim, Suckled Calves	6 Mths
G Goodwin, Wetley Rocks	1 Pure Char, 10 Mths	6 Mths
JW & JR Davies, Hope	1 Sim, 8 Mths	12 Mths

## **NAMED SIREs**

**For the avoidance of doubt, we will only announce NAMED SIREs if the sire's tag number is printed on the passport, accompanied by the full name of the registered bull.**

**We will announce SIRE TAG if there is a sire's tag number printed on the passport, but no name of a registered bull. You will appreciate that we do not have time to verify this information.**

**The details supplied to us on the signed entry form MUST be accurate, DNA tests are regularly carried out and the vendor will be liable for any discrepancies.**

## **ALTERATIONS TO PASSPORTS**

**Please make best efforts to avoid sending cattle where there is the need to alter the passport because of incorrect sex or breed.**

**These matters should be corrected before sending stock to market.**

## **Store Cattle**

<b>PEN</b>	<b>LOT NUMBER</b>	<b>VENDOR</b>		<b>TB Area</b>
1-3	751-776	R & P Ratcliffe, Sudbury F/A	9 Lim x Hfrs, 11-15 mnths 3 Baz Hfrs, 11-15 mnths 12 Lim Strs, 11-14 mnths 2 Holst Fries Strs, 11-14 mnths	
4	777-779	TR Meakin, Loxley	3 B Blue Strs, 12 mnths	6 Mths
4	780-781	RP Lawley, Draycott	1 Hfd x Hfr, 12 mnths 1 Lim x Hfr, 12 mnths	
4	782-786	RD & A Lomas, Calow	5 A Angus Strs, 12 Mths	
5	787	JW & JR Davies, Hope	1 Lim Str, 12 Mths	12 Mths
5	788-790	J Bonsall, Atlow	3 Cont Strs, 12-14 Mths	6 Mths
5	791-796	S Young, Radbourne	3 B Blue Hfrs, 10-18 mnths 3 B Blue x Strs, 12-15 mnths	6 Mths
6	802-806	T Lee, Ripley	4 Hfd Hfrs, 15 mnths 1 Char Str, 15 mnths	6 Mths
7-8	807-822	MJ & RD Bradbury, Biggin	9 Lim Strs, 7-16 Mths 1 A Angus Str, 16 Mths 6 Lim Hfrs, 7-16 Mths	6 Mths

<b>8</b>	823-825	Ransome Farms, Alport	1 A Angus Str, N Sire 1 Lim Hfr 1 Here Hfr, 14 Mths	6 Mths
<b>9</b>	826-828	TJ & MR Gould, Sheen F/A	3 Blond x Strs/Hfrs, 15-16 mnths	6 Mths
<b>9</b>	829	T Jackson, Ashbourne	1 Here Str, 16 Mths, N Sire	6 Mths
<b>9</b>	830-835	I & T Greenfield, Nuneaton, F/A	4 B Blue Strs, 16-17 Mths 1 Holst Str, 17 Mths 1 Pure Lim Hfr, 19 Mths	12 Mths
<b>10</b>	836-839	MJ Wildgoose, Holymoorside	1 Hfd Str, 10 mnths 1 Hfd Hfr, 10 mnths, Named Sire 1 Hfd Hfr, 12 mnths 1 Hfd Hfr, 17 mnths	12 Mths
<b>10</b>	840-844	Furness & Taylor, Wormhill, F/A	5 A Angus Strs, 16 Mths	6 Mths
<b>10</b>	845	EJ Mottram, Gratwich	1 Here Hfr, 18 Mths BVD Tag & Tested	6 Mths
<b>11</b>	846-854	R Crane, Brailsford	9 Lim Strs & Hfrs, 16 Mths	6 Mths
<b>12</b>	855-862	W Wilson, Hilton	1 Sim Str 5 Lim Hfrs 2 A Angus Hfrs, 16 Mths	6 Mths
<b>13-14</b>	863-880	D&E Witter Farming Partnership, Crewe	3 Blond/BBx/Lim Strs, 17 mnths 2 Blonde x Str, 17 mnths 6 Blonde x Hfrs, 18 mnths 2 Blonde x Hfrs, 16-18 mnths 3 Blonde x Hfrs, 18 mnths 2 Blonde x Strs, 17-18 mnths Suckler Bred, BVD T&T	6 Mths
<b>15</b>	881-885	RA Tatlow, Ashbourne Green	5 Cont Strs, 17 Mths	6 Mths
<b>15</b>	886-889	AP Critchlow, Wheston	2 Here Strs, 17 Mths, N Sires 2 Here Hfrs, 17 Mths, N Sires	6 Mths
<b>16</b>	890-893	P Hill & Co, Swadlincote F/A	4 Beef S Horn Hfrs, 15-19 mnths	
<b>16</b>	894-899	JW & RG Ede, Youlgreave, F/A	6 Cont Strs & Hfrs, 18 Mths	6 Mths
<b>17</b>	900-909	Cubley Cottage Farm Ltd	10 B Blue Hfrs, 17-18 mnths	
<b>18</b>	913-916	MI Mosley & Co, Sheffield	1 Lim Str, 18 Mths 1 A Angus Str, 17 Mths 2 Lim Hfrs, 18 Mths	48 Mths
<b>18</b>	917-918	FR Platts & Sons, Bamford, F/A	2 A Angus Strs, 18 Mths, N Sires	12 Mths
<b>19</b>	919-928	AW Gilman & Sons, Wetton F/A	10 AA/Hfd Strs/Hfrs, 18 mnths	6 Mths
<b>20</b>	929-933	GRP Cotterill, Fenny Bentley	5 Lim x Strs, 18 mnths	6 Mths
<b>20</b>	934-938	RN Wilcockson, Eastmoor	3 A Angus Strs, Sire Tags 1 Sim Str 1 Char Str, 18-19 Mths	12 Mths
<b>21</b>	939-940	PJ & HK Sargeant, Uttoxeter	2 Lim Hfrs, 18 Mths	6 Mths
<b>21</b>	941-944	R Bennett & Son, Bamford	3 A Angus Strs & Hfrs, 18-20 Mths 1 Here Hfr Named Sires	12 Mths
<b>21</b>	945-947	JE B & S White, Hollowmeadows F/A	3 AA x Hfrs, 18-21 mnths, N Sire	48 Mths
<b>22</b>	948-958	MP Butler, Roston, F/A	11 Sim Strs, 20-24 Mths	6 Mths
<b>23</b>	959-967	ES Rowarth & Sons, Bradwell	9 Saler Strs, 18-20 Mths	12 Mths
<b>24</b>	968-971	J Shardlow, Shirland	4 Here Strs & Hfrs, 20 Mths	6 Mths

<b>24</b>	972-976	Wilne Farms, Shardlow	1 Pure Here Str, 21 Mths 3 Ped Here Hfrs, 19-21 Mths 1 Ped Here Hfr, 9 Mths	12 Mths
<b>25</b>	977-979	GS Heathcote & Son, Romiley	3 AA Hfrs, 20 mnths, N Sire	48 Mths
<b>25</b>	980-986	DA & AM Campeau, Crowdicote	7 Lim Strs & Hfrs, 22-24 Mths	6 Mths
<b>26</b>	987-995	J & A Skidmore, Chelmorton	2 AA Strs, 22-24 mnths 3 B Blue Strs, 22-24 mnths 4 B Blue Hfrs, 22-24 mnths	6 Mths
<b>27</b>	996-998	CH Leeson & Son, Ipstones, F/A	3 Sim, S Dev, B Blue Strs, 22-24 Mths	6 Mths
<b>27</b>	999-1005	RH Bunting, Friden	1 A Angus Str, 25 Mths 6 B Blue Hfrs, 25 Mths	6 Mths
<b>28</b>	1006-1013	D Poole, Flagg, F/A	8 B Blue & A Angus Strs & Hfrs, 23- 24 Mths	6 Mths
<b>28</b>	1014-1015	EJ Garrett & Son, Barton Under Needwood	2 Sim Strs & Hfrs, 24 Mths	6 Mths
<b>29</b>	1016-1019	GM Brown & Son, Holymoorside F/A	4 B Blue Hfrs, 23-26 mnths	12 Mths
<b>29</b>	1020-1022	M Wainwright, Poynton F/A	3 Lim x Strs/Hfrs, 25-27 mnths Hfrs Johnes Level 2 Homebred, BVD free	
<b>29</b>	1023-1024	TPA Wardman, Warslow	2 Lim Strs, 26 Mths	6 Mths
<b>30</b>	1025-1034	D Spencer, Winster	4 AA x Hfrs, 26-29 mnths 6 AA x Strs, 25-28 mnths	6 Mths
<b>31</b>	1035-1036	I Boyd, Chesterfield	2 Sim Strs, 27 Mths	
<b>31</b>	1037-1038	D Chadwick, Kniveton	1 Lim Str, 27 Mths 1 B Blue Hfr, 27 Mths	6 Mths
<b>32-34</b>	1039-1062	WJ Heathcote & Co, Grange Mill, F/A	2 Sim Strs, 28 Mths 2 Here Strs, 27 Mths 2 Dairy Shorthorn Strs, 27-28 Mths 18 Fries Strs, 26-28 Mths	6 Mths
<b>34</b>	1063-1064	I Williamson, Matlock	2 Lim Strs, 35-40 Mths	6 Mths





Animal &  
Plant Health  
Agency

# Bluetongue in cattle

## Know the signs

Bluetongue serotype 3 (BTV-3) is circulating on the eastern side of England. The Animal and Plant Health Agency (APHA) and Defra have declared bluetongue zones spanning several counties to help control further spread of the disease. You can find out more and check whether you are in a bluetongue zone by visiting [gov.uk/bluetongue](http://gov.uk/bluetongue).

You can play a part in helping to stop bluetongue spreading by checking your animals for clinical signs, only moving animals if essential.

### Clinical signs to look out for in cattle

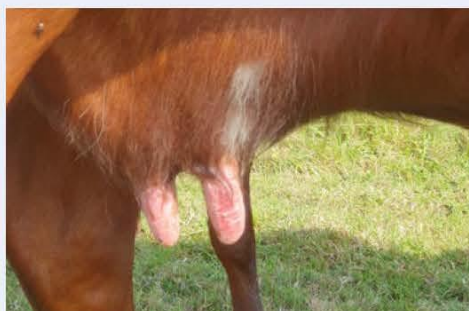
- lethargy
- crusting and erosions around the nostrils and muzzle
- conjunctivitis and excessive tear staining
- redness of the mouth, eyes, nose
- reddening of the skin above the hoof and between the cleats
- nasal discharge
- reddening and erosions on the teats
- fever
- milk drop
- not eating
- abortion, foetal deformities and stillbirths

Adult cattle may be infectious for several weeks while showing little or no sign of disease. They are often the preferred host for biting midges (the vector of bluetongue virus).

### Clinical signs in calves

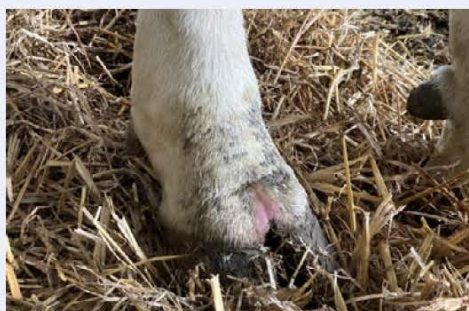
Calves can become infected with bluetongue virus before birth if the mother is infected while pregnant. Signs of infection include:

- calves born small, weak, deformed or blind
- death of calves within a few days of birth
- stillbirths



Reddening and erosions on the teats

© A Allen



Red interdigital cleft



Ulceration in nostrils



Crusting around nostril

© A Allen

Find out more information and how to report bluetongue by visiting [www.gov.uk/bluetongue](http://www.gov.uk/bluetongue)

