

11am

Monday 22ND July 2024

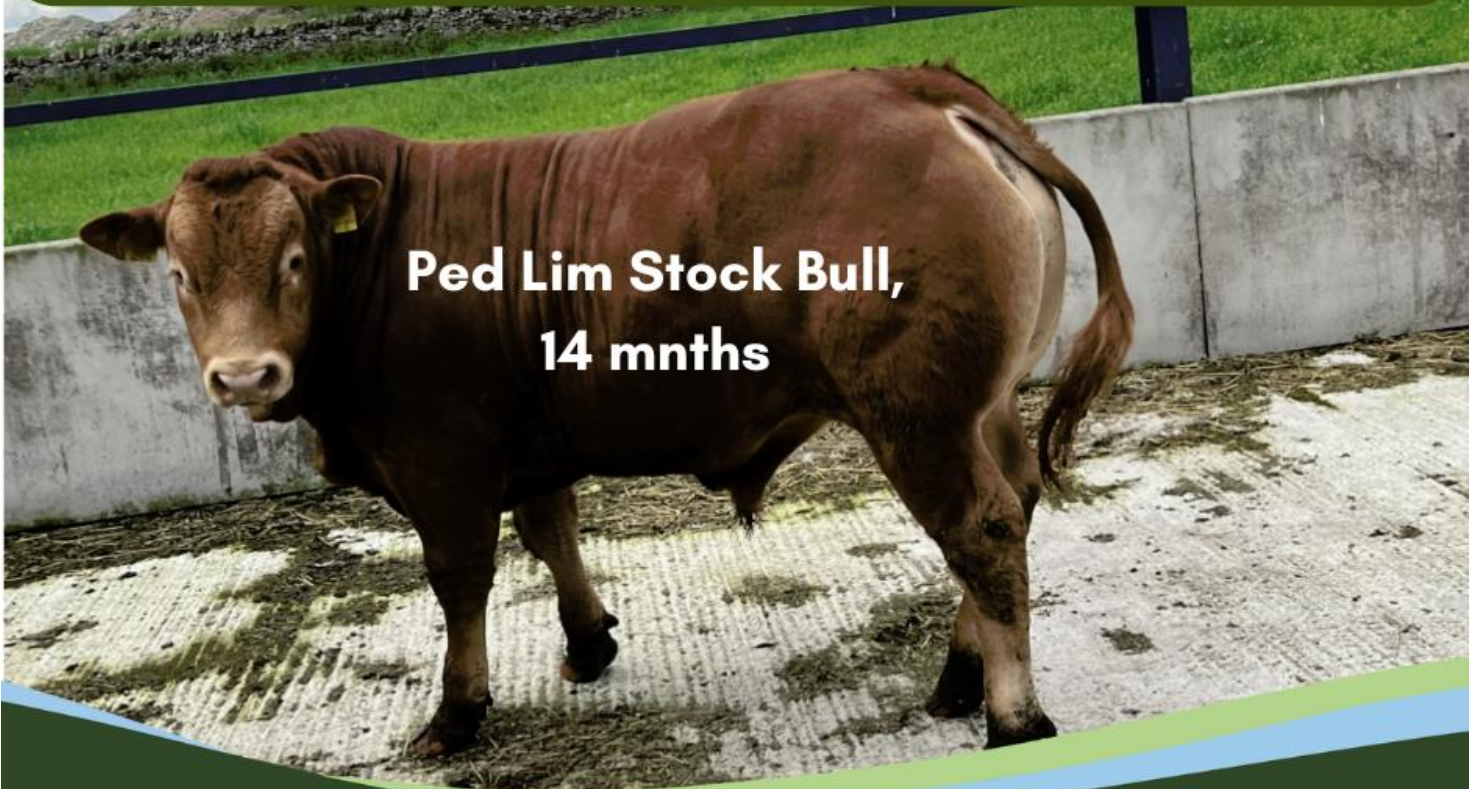
7 Cows & Calves, 6 in Calf, 2 Stock Bulls, 1 Feeding Cows,
20 Feeding Bulls & 169 Steers & Heifers

- Staff are on hand to assist with unloading from 7am in the Cattle section.
- Please make sure Breeding Cattle, Feeding Bulls & Lots 751-1000 are penned for 9am to allow time for paperwork to be processed & the sale to start on time

Bakewell Market

Store Cattle Section Special Entries

Monday 22nd July



**Ped Lim Stock Bull,
14 mnths**



Bakewell Market 01629 812777

Breeding Cattle

		TB Area
M Heathcote, Hartington	1 Lim Cow With Sim Hfr Calf	6 Mths
SJ Tunstall, Heage	1 Char x Cow with Char x Hfr Calf	6 Mths
Artaine Ltd, Shottle	3 Stab Cows with Lim Calves	6 Mths
Ford, Kirk Ireton	2 B Blue Cows, 5 yrs with 2 Hfr Calves, 3-4 Mths	6 Mths
JE & GE Mills & Son, Stanton by Dale F/A	5 Ped Lim Cows, 13-14 yrs with 5 Hfd x Lim Calves, 4 Mths	12 Mths
GRP Cotterell, Fenny Bentley	1 Lim PD 6 Mths In Calf To Lim	6 Mths

Stock Bulls

		TB Area
C Dawson, Bawtry	1 Ped Char, 24 Mths	48 Mths
N Pearson, Peak Forest, F/A	1 Ped Lim, 14 Mths	6 Mths

Feeding Cows

		TB Area
A Sharpe, Lowdham	1	12 Mths

Feeding Bulls

		TB Area
S Walker, Kirk Ireton	1 Fries, 9 Mths	6 Mths
RA Tatlow, Ashbourne Green F/A	1 B Blue, 11 Mths	6 Mths
RP Lawley, Draycott	2 B Blue/Hfd Strs, 14 Mths	6 Mths
D Brown, Bonsall	5 Blond, 9 Mths	6 Mths
AJ & GH Bland, Mottram F/A	4 Lim, 10-12 Mths	48 Mths
NH Denniff, Holmesfield	2 Luing, 14 Mths	12 Mths
C Wild, Marple	1 Hfd x, 12 Mths	
A Sharpe, Lowdham	3 Lim, 12-14 Mths	12 Mths
A Martin, Holymoorside	1 Lim, 16 Mths	12 Mths

NAMED SIRES

For the avoidance of doubt, we will only announce NAMED SIRES if the sire`s tag number is printed on the passport, accompanied by the full name of the registered bull.

We will announce SIRE TAG if there is a sire`s tag number printed on the passport, but no name of a registered bull. You will appreciate that we do not have time to verify this information.

The details supplied to us on the signed entry form MUST be accurate, DNA tests are regularly carried out and the vendor will be liable for any discrepancies.

ALTERATIONS TO PASSPORTS

Please make best efforts to avoid sending cattle where there is the need to alter the passport because of incorrect sex or breed.

These matters should be corrected before sending stock to market.

Store Cattle

PEN	LOT NUMBER	VENDOR		TB Area
1	751	S Walker, Kirk Ireton	1 Lim Str, 9 Mths	6 Mths
1	752-755	C Wild, Marple	4 Hfd x Strs, 12 Mths	
1	756-760	PG Godber, Kimberley	2 Holst Strs, 12 Mths 2 B Blue Strs, 12 Mths 1 B Blue Hfr, 14 Mths	12 Mths
2	761-765	A Sharpe, Lowdham	5 Lim Hfrs, 11-15 Mths	12 Mths
2	766-770	T Neville, Tansley, F/A	5 B Blue Strs, 12-13 Mths	6 Mths
3	771-773	R Tuxford, Lowdham	3 Lim Hfrs, 11-14 Mths	12 Mths
3	774-775	TJ & MR Gould, Sheen	2 Blond x Hfrs, 13 Mths	6 Mths
3	776	RP Lawley, Draycott	1 AA x Str, 14 Mths	6 Mths
4-5	777-794	M Gregory, Peak Forest	18 Lim Strs/Hfrs, 14-15 Mths	6 Mths
6	795-798	S & LJ Dyson, Hollow Meadows	4 Stabiliser Hfrs, 16 Mths	48 Mths
6	799-804	AP Critchlow, Wheston	3 Here Strs, 16-17 Mths, N Sire 3 Here Hfrs, 16-17 Mths, N Sire	6 Mths
7	805-807	AK Bennison, Stockport	3 Here Strs, 16 Mths, N Sires	48 Mths
7	808-815	RA Tatlow, Ashbourne Green F/A	2 Blond Strs, 16-17 Mths 2 AA Strs, 16-17 Mths 4 B Blue Strs, 17-18 Mths	6 Mths
7	816-818	Furness & Taylor, Wormhill, F/A	3 B Blue Strs, 17 Mths	6 Mths
8	819-826	JW & AE Faulkner, Radbourne F/A	3 AA Hfrs, 17 Mths 2 AA Strs, 16-17 Mths 1 Lim Hfr, 16 Mths 1 W Blk Str, 16 Mths 1 W Blk Hfr, 22 Mths BVD Neg	6 Mths
8	827	A Martin, Holymoorside	1 Lim Hfr, 16 Mths	12 Mths
9	828-839	RR & J Haslam, Eastmoor F/A	2 AA Strs, 11-15 Mths 10 Holst Fries Strs, 12-20 Mths	12 Mths
10	840-841	SJ Tunstall, Heage	1 Blond Hfr, 15 Mths 1 Beef S Horn Hfr, 22 Mths	6 Mths
11	842-844	A Keeling, Cheadle	3 B Blue Hfrs, 18 Mths	6 Mths
11	845-847	D Brown, Bonsall	3 Hfd Strs, 18 Mths	6 Mths
12-13	848-862	A Donnison, Rugeley	13 Here Strs, 18-24 Mths 1 Sim Str, 18 Mths 1 Here Hfr, 18 Mths	6 Mths
14	863-864	J Walker, Wadsley Bridge	1 Holst Fries Str, 18 Mths 1 L Horn x Hfr, 20 Mths	48 Mths
14	865-867	A & L Mills, Grindleford	3 Longhorn Hfrs, 22 Mths BVD Tag & Tested	12 Mths
14	868-870	GS Heathcote & Son, Stockport	3 Hfd Strs, 21 Mths	48 Mths
15	871-876	C Birch, Alport	2 Hfd Strs, 13 Mths 3 Hfd x Strs, 15-17 Mths 1 Hfd Hfr, 28 Mths	6 Mths
15	877-880	PR & JJ Holgate, Alderwasley, F/A	3 A Angus Strs, 24 Mths 1 A Angus Hfr, 24 Mths	6 Mths

16	881-886	Leasows Partners, Uttoxeter F/A	3 Hfd x Hfrs, 22-24 Mths 1 W Blk Str, 24 Mths 1 AA x Hfr, 26 Mths 1 AA x Str, 14 Mths, N Sire, Suckler Bred	6 Mths
16	887-890	DBR Farming Services, Hilderstone	1 Shorthorn Str, 25 Mths 1 B Blue Str, 26 Mths 2 B Blue Hfrs, 24-25 Mths	6 Mths
17	891-893	JG Belfield, Sheen F/A	1 Lim Hfr, 25 Mths 1 AA Str, 25 Mths, Named Sire 1 Welsh Blk Str, 25 Mths	6 Mths
17	894-897	K & M Ede & Son, Checkley, F/A	3 Here Strs, 25 Mths, N Sires 1 B Blue Str, 25 Mths	6 Mths
18	898-902	D Spencer, Winster	5 AA Strs, 25-26 mnths, N Sire	6 Mths
19	903-909	Buntings Agri Ltd, Pinxton	7 Blonde Strs & Hfrs, 24-25 Mths	12 Mths
20	910-913	S Bannister, Rugeley F/A	3 Lim x Strs, 25-27 Mths 1 Lim x Hfr, 25 Mths	6 Mths
20	914	GRP Cotterell, Fenny Bentley	1 Lim Hfr, 27 Mths	6 Mths
21	915-920	W Whitbred, Biggin by Hulland	3 B Blue Hfrs, 28 Mths 3 Hfd Hfrs, 28 Mths	6 Mths

