

11am

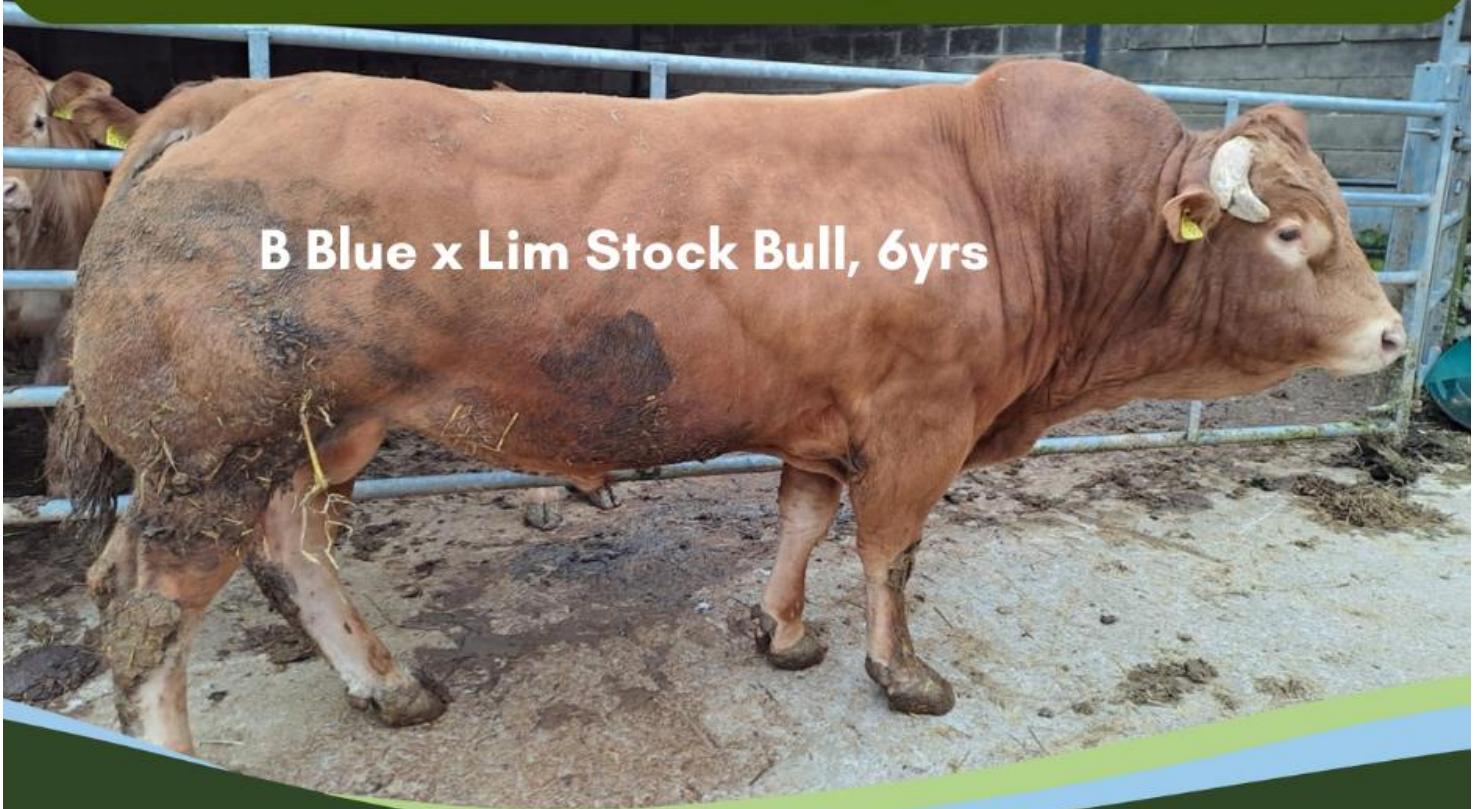
Monday 24th June 2024

10 Cows & 10 Calves, 4 Stock Bulls, 4 Feeding Cows,
6 Feeding Bulls & 249 Steers & Heifers

- Staff are on hand to assist with unloading from 7am in the Cattle section.
- Please make sure Breeding Cattle, Feeding Bulls & Lots 751-1000 are penned for 9am to allow time for paperwork to be processed & the sale to start on time

Bakewell Market

Store Cattle Section Special Entries
Monday 24th June



B Blue x Lim Stock Bull, 6yrs

Breeding Cattle

		TB Area
PV Hawkins, Shirland	3 B Blue x Cows with Lim x Bull Calves, 4wks	6 Mths
Artaine, Shottle	5 Stabiliser Cows With Lim Calves 1 Lim (First Calver) With Lim Calf	6 Mths
R Hughes, Stanley	1 B Blue First Calver With B Blue Str Calf	6 Mths

Stock Bulls

		TB Area
J Bonsall, Atlow	1 B Blue x Lim, 6 Yrs	6 Mths
B & M Elkin & Sons Ltd, Hilderstone, F/A	1 Shorthorn, 3 Yrs	6 Mths
WI Fletcher & Son, Sheldon	1 Ped Belted Galloway, Glen Ivanhoe, 6 Yrs	6 Mths
A Webster, Syson	1 Ped Sim, 5 Yrs	6 Mths

Feeding Cows

		TB Area
R Barlow, Retford	1	12 Mths
LH Powell & Son, Hundall	3	12 Mths

Feeding Bulls

		TB Area
Fodens Of Streethay, Hanbury	2 Here, 13 Mths, Tag Sire	
Ridgewood Farm, Alderwasley	1 Beef Shorthorn, 12 Mths	6 Mths
C & M Wainwright, Denstone, F/A	1 Lim, 15 Mths	6 Mths
P Webster, Foolow	2 Cont, 12 Mths	6 Mths

NAMED SIRES

For the avoidance of doubt, we will only announce NAMED SIRES if the sire`s tag number is printed on the passport, accompanied by the full name of the registered bull.

We will announce SIRE TAG if there is a sire`s tag number printed on the passport, but no name of a registered bull. You will appreciate that we do not have time to verify this information.

The details supplied to us on the signed entry form MUST be accurate, DNA tests are regularly carried out and the vendor will be liable for any discrepancies.

ALTERATIONS TO PASSPORTS

Please make best efforts to avoid sending cattle where there is the need to alter the passport because of incorrect sex or breed.

These matters should be corrected before sending stock to market.

Store Cattle


PEN	LOT NUMBER	VENDOR		TB Area
1	751-753	J Wood, High Peak	3 Lim Hfrs, 6-12 Mths Suckler Bred	12 Mths
1	754-755	A Kirk, Underwood	1 Char Str, 12 Mths 1 Blond Hfr, 11 Mths	12 Mths
1	756-759	LH Powell & Son, Hundall	4 Sim x Hfrs, 12 mnths	12 Mths
2	760-769	S Wagstaffe & Sons, Two Dales	6 Lim Strs & Hfrs, 10-12 Mths 2 B Blue Strs, 12 Mths	6 Mths

			2 Here Strs, 12 Mths	
3	770-779	Artaine, Shottle	10 B Blue Strs & Hfrs, 13 Mths	6 Mths
4	780-784	A & R Allsop, Smalley	4 Here Hfrs, 12-13 Mths	6 Mths
4	785-788	BR & SB Archer, Sutton On The Hill, F/A	4 Lim Hfrs, 13-14 Mths BVD Tag & Tested	6 Mths
4	789-791	JE & GE Mills & Sons, Stanton by Dale, F/A	3 Here Hfrs, 14 Mths, N Sires	6 Mths
5	792-797	RD & J Hammersley, Offcote	6 Char Strs, 12-14 Mths	6 Mths
5	798-801	WJ & DM Madin, Holymoorside	4 Lim Strs, 13-17 Mths	12 Mths
6	802-809	AW & RA Mycock, Flagg, F/A	8 B Blue & Lim Strs & Hfrs, 12-14 Mths	6 Mths
7-8	810-834	B & M Elkin & Sons Ltd, Hilderstone, F/A	25 A Angus, Here, B Blue & Fries Strs & Hfrs, 12-14 Mths	6 Mths
9	835	J Bonsall, Atlow	1 Cont Str, 14 Mths	6 Mths
9	836-845	GS & L Wheeldon Ltd, Atlow, F/A	7 B Blue Strs, 11-15 Mths 3 Lim Hfrs, 13-15 Mths Closed Herd, IBR & BVD Vaccinated	6 Mths
10	846-851	GRP Cotterell, Fenny Bentley	2 Lim Strs, 11-12 Mths 2 Stab Hfrs, 11-15 Mths 2 Lim Hfrs, 14-15 Mths	6 Mths
10	852-856	P Brittain Cartledge, Buxton	5 A Angus & B Blue Strs, 18 Mths	6 Mths
11	857-863	PR & PM Atkin, Bamford, F/A	7 Strs & Hfrs, 13-15 Mths	12 Mths
12	864-871	Alma Mount Farm, Rowarth	2 A Angus Strs, 13-15 Mths, N Sires 6 A Angus Hfrs, 13-15 Mths, N Sires	12 Mths
13	872-881	G Pykett, Ilkeston	5 Lim Strs 5 Lim Hfrs, 15-18 Mths	6 Mths
14-16	882-909	Fodens Of Streethay, Hanbury	10 Here Strs, 13-30 Mths, Sire Tag 18 Here Hfrs, 12-26 Mths, Sire Tag	
17	910-919	AW Gilman, Wetton, F/A	10 Here & A Angus Strs & Hfrs, 18 Mths N Sires	6 Mths
18	920-928	C & M Wainwright, Denstone, F/A	4 Lim Strs, 15-18 Mths 5 Lim Hfrs, 20 Mths	6 Mths
19	929-933	JE, B & S White, Moscar, F/A	5 A Angus Hfrs, 18-21 Mths, N Sires	48 Mths
19	934-935	J & M Riley, Hartington	2 Lim Hfrs, 20 Mths	6 Mths
19	936-939	B Ryan, Huthwaite	4 B Blue Hfrs, 20 Mths	12 Mths
20	940-943	F Wilson, Edale	2 Red Poll Strs, 20-24 Mths 2 Red Poll Hfrs, 14 Mths	12 Mths
20	944-949	Hall Partnership, Litton, F/A	6 A Angus Hfrs, 21 Mths, N Sires	6 Mths
20	950	Ridgewood Farm, Alderwasley	1 A Angus Str, 22 Mths, N Sires	6 Mths
21-22	951-966	CJ Green, Sheffield	16 A Angus Strs & Hfrs, 18-28 Mths	12 Mths
22	967-971	J Blant, Strelley	5 Here Hfrs, 24 Mths	12 Mths
23	972-982	PR & JM Percival, Waterhouses	11 Sim & Here Strs & Hfrs, 22-27 Mths	6 Mths
24	983-987	Leasow Partners, Uttoxeter, F/A	5 A Angus Strs & Hfrs, 22-23 Mths	
24	988-989	J Furness, Hope	2 Here Hfrs, 23 Mths, N Sires	12 Mths
24	990-991	D & A Dickinson, Bradbourne	1 Lim Str, 23 Mths 1 A Angus Str, 23 Mths, N Sire	6 Mths
25	992-993	J Walker, Wadsley Bridge	1 Char Str, 24 Mths 1 Beef Shorthorn Hfr, 23 Mths	48 Mths
25	994-996	JG Belfield, Sheen, F/A	1 Mont Str, 26 Mths 2 Brit Fries Strs, 22-25 Mths	6 Mths
25	997-1000	C Bannister, Rugeley, F/A	2 Lim Strs, 26 Mths 2 Lim Hfrs, 26 Mths	6 Mths



To Enter
Store & Breeding Cattle
for Monday 1ST July
Call our Livestock Team (Option 3)
Before 12 Noon on
Friday 28TH June

Bakewell Market
Store Cattle Section Special Entries
Monday 24th June



Pedigree Belted Galloway, Glen Ivanhoe, 6 Yrs

f in @ v
Bakewell Market 01629 812777
BAGSHAW'S
Land Property Livestock



Fee-Free Loans Now Available From AMC

As Agents for the Agricultural Mortgage Corporation, we are pleased to announce that we can now arrange loans for farmers and landed estates where no set-up fee is charged.

For large investments this represents a significant saving.

To be eligible for the Clean Growth Financing Initiative loan, the usual AMC credit criteria apply and the loan purpose must be deemed to assist in improving the environmental sustainability of the farming business.

Qualifying criteria for the Clean Growth Financing Initiative loan include: -

- Funding for renewable energy projects
- Match funding for capital projects where grant funding has been approved under CSS / SFI
- Funding other machinery / infrastructure where an improvement to the environmental credentials of the business can be demonstrated as a result of the investment.

For more information, please speak in complete confidence to Ivor Lowe: 07977 449126

AMC loans available for business purposes only, provided on a secured loan basis. Minimum AMC Clean Growth Financing Initiative is £50,000. To meet customer requirements, lending criteria will vary. Lending is subject to status.