

**COLLECTIVE SALE OF  
TRACTORS, PLANT  
VEHICLES, MACHINERY  
AND EQUIPMENT**



# **DARLEY MOOR MACHINERY SALE**

**DARLEY MOOR, ASHBOURNE, DE6 2ET**

**170 TRACTORS & VEHICLES**

**HANDLERS, EXCAVATORS, LORRIES, PLANT AND A.T.V'S**

**LIVESTOCK EQUIPMENT, TRACTOR SUNDRIES**

**GRASSLAND & ARABLE MACHINERY**

**SMALL TOOLS, MEMORABILIA**

**WORKSHOP EQUIPMENT & SUNDRIES**

**IN TOTAL – 2370 LOTS**

**on**

**FRIDAY 19TH APRIL 2024**

**SELLING TIMES (PROMPT)**

Tools, Livestock & Garden Equipment 10.00am

Tractor Sundries and Small Plant 10.00am

Cultivation Equipment, Spreaders, Attachments & General Machinery 10.30am

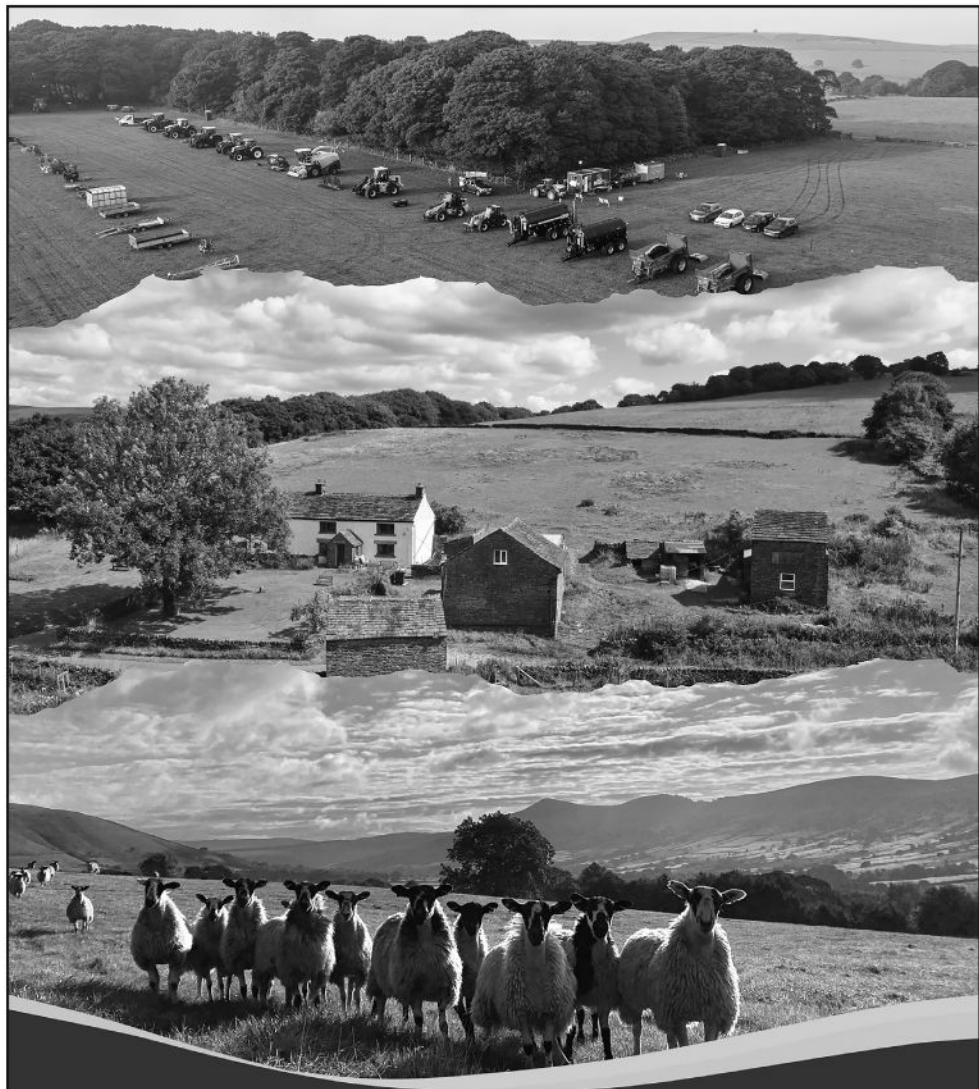
Tractors, Telehandlers and Vehicles at 12 Noon Approx.

Grassland Machinery, Plant and Trailers

(Commence after the Sale of Tractors and Telehandlers)



[www.bagshaws.com](http://www.bagshaws.com)



Within Derbyshire and Staffordshire, Bagshaws is the leading provider for property sales, professional services including planning and development, valuations, land and property management, farm record keeping and livestock and machinery sales. Contact your local office today.

**Ashbourne** 01335 342201  
**Bakewell** 01629 812777  
**Buxton** 01298 27524

**Leek** 01538 383344  
**Penkridge** 01785 716600  
**Uttoxeter** 01889 562811



## GENERAL NOTES

**All purchasers must obtain EITHER a bidding number or computer number**

### Situation and Directions

**Darley Moor Sale Site** lies 4 miles south of Ashbourne on the A515. Access to the Car Park Site is gained by turning off the main A515, signed Hales Green and Yeaveley and then by following the **Bagshaws** signs. Vendors and Purchasers travelling from the south, should leave the A50 at Sudbury Prison and travel north on the A515.

A Location Plan is attached to the rear of the Catalogue. The approaches to the Sale and the Car Parking will be adequately signed on the day of the Sale.

### Site Mobile Phone

**07757 668228**

### Sale Day Telephone No

Ivor Lowe	07977 449126
Mark Elliott	07973 673092
Oliver Hiles	07801 530899
Alastair Sneddon	07973 982441
Peter Oven	07973 982443

### Cheques/Payment – Payment is Required on Sale Day

Intending Purchasers not known to the Auctioneers must produce, prior to bidding, an acceptable reference. **Unless an acceptable reference is produced Payment is Strictly Cash.** Persons unknown to the Auctioneers and who pay by cheque/BACS may have their goods impounded until payment is verified. The Auctioneers reserve the right to refuse a bid of any potential unknown customer. The Auctioneers reserve the right to withhold purchases until cheques are cleared.

**Cash** – Under the money laundering regulations the auctioneers are unable to accept cash in sums greater than €10,000 (or its Sterling equivalent). Please contact the auctioneers to discuss methods of cash payment prior to the sale.

**Refreshments** – A Caterer will be in attendance to provide light refreshments.

## **Conditions of Sale**

As posted in the Pay Office on the day of Sale and as printed at the rear of this Catalogue. The General Notes incorporated in this Catalogue shall also be taken as incorporated in the Auctioneers' Conditions of Sale.

## **V.A.T.**

The majority of items sold will be subject to V.A.T. at the usual rate, which will be charged in addition to the auction price. Lots from unregistered Vendors will be indicated at the time of sale.

**VAT on Export Goods** – Under regulations imposed by HM Customs & Excise, the auctioneers must account in a proper manner for VAT on export goods. All customers must pay all VAT on the purchase price of goods on sale day. On receipt of all relevant export documentation and bills of lading (which must be received in the prescribed time limits), the auctioneers will then refund relevant VAT sums.

## **Delivery**

All goods for sale should be delivered to the Sale Ground on Thursday 18th April 2024 between 7.30 a.m. and 4.30 p.m. Deliveries will be accepted on Wednesday 17<sup>th</sup> April subject to prior arrangement with the Auctioneers. Telephone (01629) 812777. Reference: ME/LW/PO

## **Security**

Security Staff will be on Site during the night of the 17<sup>th</sup> and 18<sup>th</sup> April. However, items left on the Sale Ground before, during and after the Sale, remain the responsibility of the owner.

## **Liability**

The Auctioneers and the Landlords cannot be held responsible for any accident, loss or damage from any cause whatsoever which may occur whilst the item is on the Sale Ground. All lots are at the Vendor's risk until sold and the Purchaser's risk immediately at the fall of the Auctioneer's hammer.

## **Site Clearance/Insurance**

All Lots should be removed from the Sale Site by 6.00 p.m. on Monday 22<sup>nd</sup> April 2024. Vendors and Purchasers must ensure that they have adequate insurance to cover all items whilst they are on site.

### **Unsold Lots**

Vendors must check the Sold/Unsold status of their lots with the Sale Office. The Auctioneers reserve the right to charge for the removal of items left on the Sale Site after the Day of Sale.

### **Health and Safety at Work Act 1974**

Vendors and Purchasers should note the Health and Safety at Work Act Clause (as amended) included within the Catalogue. Prior to the use of any machinery or equipment, vendors and purchasers should ensure that the item(s) comply with all relevant Health and Safety Regulations.

### **Commission Bids**

All commission bids must be placed in person at the site office **by 5.30pm on Thursday 18<sup>th</sup> April**. The Auctioneers and their staff shall not be held responsible for any commission bids which remain unexecuted on sale day if they are received after this deadline.

### **Lots Not Forward**

The Auctioneers will use every endeavour to ensure that all lots listed in the catalogue are presented for sale, but cannot accept responsibility for any lots not being presented. Nor can they entertain any claim for expenses incurred in abortive attendance at the sale.

### **Auctioneer's Right to Annul Sales**

In the event of any dispute or refusal to pay, or non-payment on the part of the Purchaser, the Auctioneers may entirely at their discretion annul and cancel the sale of such lot(s).

### **Registration**

Please note that a fully computerised office system will be in operation for the 2024 Darley Moor sale.

**All purchasers MUST register at the on site Darley Moor office – OFFICE 1 (PAY OFFICE) and this will allow our system to process bills on the day at a faster rate.**

### **Data Protection (GDPR)**

Under the new GDPR (data protection) regulations, effective from 25th May 2018, Bagshaws LLP are committed to protecting your personal information. Bagshaws LLP are required to inform you of how the data you have supplied to us will be processed.

GDPR requires the business to have a legitimate basis for processing your data. We need to process your data in order to fulfil the contract we have with you as a client or to do some work to provide you with pre-contract information (e.g. provide a quote.)

The information you provide to Bagshaws LLP for the purpose of completing the contract will be held on a database and used for this purpose only, should you wish to update any of this information please contact MGG. The data you provide to us will be retained for a period of 10 years in line with RICS guidance and to fulfil our duties with regard to conflicts of interest. At the end of this period, the client will be contacted by Bagshaws LLP for you to reclaim the file or to give the authority for it to be destroyed, if we do not receive a response data will also be destroyed. Any data kept after this period by Bagshaws LLP for business purposes, will be anonymised. For further information please see our privacy notice at [www.bagshaws.com](http://www.bagshaws.com)

### **New Customers**

You must register in person at **OFFICE 1** on Wednesday 17th April, Thursday 18<sup>th</sup> April or from 7.30am on the morning of the sale to obtain a bidding number.

### **Existing Customers**

To obtain your Bagshaws computer number please call the on site mobile phone on **07757 668228** on Wednesday 17<sup>th</sup> and Thursday 18<sup>th</sup> April only.

### **Safety**

Purchasers must respect staff safety measures, particularly within the Pay Office.

**All purchasers must obtain EITHER a bidding number  
or computer number**

## **CUSTOMER REGISTRATION**

You **MUST** register to bid at the 2024 Darley Moor sale.

### **New Customers**

You must register in person at the site office - **OFFICE 1 (PAY OFFICE)** on Thursday 18th or from 7.30am on the morning of the sale.

### **Existing Customers**

Please call the on site mobile phone on 07757 668228 to obtain your Bagshaws computer number on Wednesday 17th April & Thursday 18th April only.

**All purchasers must obtain EITHER a bidding number  
or computer number**

## **Order of Sale and Sale Times**

### **NOTE: FROM 10:30 A.M. THERE WILL BE THREE TEAMS SELLING**

**10.A.M. PROMPT** – (Auction 1) Tools, Sundries, General Equipment Livestock Equipment, Troughs and Gates, Garden Equipment, Troughs, Mowers and Collectables

**10.AM-**(Auction 2) Tractor Sundries, Small Plant and Tools

**10.30AM PROMPT** – (Auction 3) Cultivation Equipment, Fertilizer Spreaders, Loader Attachments and General Machinery

### **12 NOON TRACTORS & TELEHANDLERS FOLLOWED BY – VEHICLES, A.T.V'S, PLANT AND EXCAVATORS**

**NOTE** – The Grassland Machinery, Forage Harvesters, Balers, Muck Spreaders and Trailers recommences immediately after the telehandlers.

#### **Safe Loading**

It is the responsibility of the purchaser to arrange for the safe loading & transport of all and any purchases. Bagshaws are under no obligation to provide assistance in loading but on occasion they will do their best to help provided that it is not putting themselves, the purchaser or other people at risk of injury. For large, heavy and unwieldy items, specialist loading and transportation will be required for example bulk bins and tanks.

The decision made by Bagshaws will be final.

#### **Health & Safety at Work Act 1974**

It is expressly brought to the bidders attention that at the time of sale, items of plant, machinery and equipment may not necessarily comply with the requirements of the Health & Safety at Work Act 1974, and its' associated regulations, governing the use of plant, machinery, and equipment at work.

Whilst Bagshaws take all reasonable steps to ensure the integrity of sale items, or make bidders aware of any known defects, anyone purchasing an item must ensure it is safe, and complies with all relevant regulatory requirements, before it is used in a work environment.

## **AUCTION 1**

**(Sale to commence at 10.00am prompt)**

### **Tools, Sundries and General Equipment**

1-10	Details on Sale Day
11	Boxes Block Paving
12	Filing Cabinet
13	Sink Top With Drainer
14	Rolls Plastic
15	Wooden Ladder Extender
16	Strong Shovels
17	Window Frame With Glass
18	Bicycle Small Wheels
19	A Boards
20	Drop Leaf Dining Tables
21	Set Aluminium Ladders
22	Metal Racking On Wheels
23	Grain Shed Steel Louvers
24	Metal Patio Set
25	Metal Workers Vice
26	Galv Food Bin
27	Tripod Light
28	Extension Leads
29	Feston Lighting
30	Box Of Hand Tools
31	Tile Cutter
32	Kitchen Work Top
33	Ladies Mountain Bike
34	Black & Decker Workbench
35	Airgun Rat Target
36	Reclaimed Granite Stone Cobbles
37	Reclaimed Granite Stone Cobbles
38	Folding Picnic Bench
39	Pine Chairs
40	Bulk Bag Cobbles
41	Bulk Bag Cobbles



42	Bulk Bag Cobbles
43	Bulk Bag Cobbles
44	Bulk Bag Cobbles
45	Bulk Bag Cobbles
46	Bulk Bag Cobbles
47	Bulk Bag Cobbles
48	Bulk Bag Cobbles
49	Bulk Bag Coal
50	Garden Shed
51	Road Closure Barriers
52	Chain Link Fencing
53	Wall Copings
54	Wall Copings
55	Wall Copings
56	Wall Copings
57	Pillar Caps
58	Pillar Caps
59	Ridge Tiles
60	Ridge Tiles
61	Ridge Tiles
62	Ridge Tiles
63	Chimney Pots
64	Stone Copings
65	Stone Copings
66	Slate Slabs
67	Stone Copings
68	Stone Lintels
69	Stone Lintels
70	Stone
71	Stone
72	Man Hole Covers
73	Block Paving
74	Block Paving
75	Arrow Props
76	Arrow Props
77	Roofing Membrane

78	Building Trestles
79	Work Mate Bench
80	Wooden Step Ladder
81	Makita Paddle Mixer
82	Pine Beam
83	Small RSJs
84	Wooden Burning Stove
85	Qty Scaffold Board
86	Rubber Workshop Mat
87	Draughtsman Board & Square
88	Qty Workshop Tools
89	Qty Van Racking
90	Storage Boxes & Crates
91	Galvanised Dustbin
92	Qty Aluminium Pallets
93	Palisade Fencing
94	Pair Of 1.8m Gates & Posts
95	IBC Containers
96	Wall Copings
97	Wall Copings
98	Bag Of Wood
99	Bag Of Wood
100	Bag Of Wood
101	Bag Of Wood
102	Large Steel Tube
103	Large Steel Box Section
104	Large Steel Work Bench
105	Pair Timber Gates
106	Belle Wheel Barrow
107	Road Forms 3m
108	Road Forms 3m
109	Work Bench
110	Hand Tools
111	Roll Draw Cord
112	Singer Sowing Machine With Stand
113	Fencing Materials

114	Pipes & Building Materials
115	Manual Post Knocker
116	Assorted Lifting Chains
117	110V Transformers
118	Qty Hand Tools
119	Cast Iron Gutter Outlets
120	Qty Galvanised Purlins
121	Qty Mesh Gabions
122	Tubular Upper Stable Partitions
123	Qty Purlins
124	Selection Mowers Spares/Repairs
125	Selection Motorways Posts
126	Large Cooker Hood
127	Cast Lamp Post
128	Filing Cabinets
129	RSJ's
130	19ft Tembo Beams
131	Tembo Beams
132	Tembo Beams
133	Concrete Panels
134	Toolbox & Tools
135	Site Poles
136	Cordless Drills With Chargers
137	Wooden Window Frame
138	Mixed Nuts Bolts & Washer
139	Reinforced Concrete Pipes
140	Concrete Panels
141	RSJ's
142	Metal Pipes
143	Interior Doors
144	PVC Double Glazed Windows
145	Scaffold Board
146	Ducting
147	Tote Bag Logs
148	Tote Bag Logs
149	Set Of Portable Steps

150	Steel Steps
151	Pallet Of Stone
152	Crash Barriers
153	Crash Barriers
154	Scaffold Boards
155	Plastic Water Butts
156	Double Aluminium Ladder
157	Triple Wooden Ladder
158	30 Kw Wood / Coal Boiler
159	2000Ltr Hot Water Store
160	Crawler Roof Ladder & Alloy Ladder
161	Qty Pallet Racking & Shelves
162	Workshop Bench
163	Qty Nails 2.5
164	Qty Nails 3
165	Large Wheel Barrow
166	Set Of Metal Factory Stairs
167	Qty Plastic Barrels & Lids
168	Set Of Ladders
169	Danish Trolleys
170	Cable Reel
171	Square Oak Beam 10 "
172	Square Posts 8 "
173	Extending Aluminium Ladder
174	Gale Breaker 8Ft
175	Double Belfast Sink
176	Dog Crate
177	Fox Cage
178	Cast Fire Place Surround
179	Ladies Bike Tekarra
180	Pressure Washer
181	Qty Power Tools
182	Staffordshire Blue Ridge Tiles
183	Pedal Bin
184	Radleigh Electric Bike
185	Tower Scaffolding & Supporting Bars

186	Steel Planks
187	Record 36' Bolt Cutter
188	Pipe Bender
189	Fold Up Table
190	Radiator
191	Drainage Connections
192	Downpipe Fittings
193	Radiator
194	Shelf Brackets
195	Qty Assorted Screw
196	Metal Drawer Cabinet
197	Washbasin
198	Vanity Basin
199	Black & Decker Ultrifier
200	Multi Fuel Boiler
201	Selection Old Bicycles
202	Smokeless Coal
203	Multi Purpose Compost
204	Bedmax Bedding
205	Parlour Paper Towels
206	Qty Timber
207	Qty Drainage / Water Pipe
208	Qty Tin Sheets
209	Qty Rachets Straps
210	Steel Drums
211	Qty Sleepers
212	Qty Hazel Bean Sticks
213	Fire Extingusher Stand
214	Ladder
215	Pub Bar Mats
216	Alloy Ladders
217	Arborist Ladders
218	Bungee Cord
219	Kitchen Sink
220	Energas Bottles
221	Ex Army Ammo Boxes

222	Wooden Coffin
223	Plastic Fuel Cans
224	Cable Reel Runners
225	Step Ladders
226	Ply Boards
227	Wheel Barrow
228	Wheel Barrow
229	PVC Door
230	Pallet Box
231	Pallet Box
232	Pallet Box
233	Pallet Box
234	Wheel Clamp
235	Vintage Esso & Waxoyl Tins
236	Street Light Pole
237	Street Light Pole
238	Drain Pipe
239	Calor Bottle & Burner
240	Various Security Bars
241	Childs Picnic Bench
242	Wooden Climbing Frame
243	Dog Cage
244	Rubber Paving Mallet
245	Patio Set
246	Hydraulic Hoses
247	Load Binders
248	Qty Electrical Fittings
249	Qty Plastic Ducting
250	Qty Plastic Ducting
251	Qty Plastic Ducting
252	Qty Plastic Ducting
253	Qty Ducting Fittings
254	Qty Ducting Fittings
255	Wrought Iron Garden Gate
256	Double Strap Hinges
257	Qty Performance Intercooler Pipe

258	Weight Training Bars & Weights
259	Weight Training Frame
260	Weight Training Bench
261	Foldable Sack Truck
262	IBC's
263	Esse Cooking Range
264	Qty Kindling
265	Wooden Panels
266	Double Ladders
267	Double Ladders
268	Step Ladders
269	Scaffold Tower
270	Qty 200L Barrels
271	Qty 200L Barrels
272	IBC
273	Slot Together Blocks
274	Slot Together Blocks
275	Slot Together Blocks
276	Qty Floor Insulation
277	Rubber Speed Ramps
278	Reclaimed Granite Sets
279	Reclaimed Granite Sets
280	Light Column
281	Skip Compactor
282	Fencing
283	Skip Shoots
284	Plastic Pipes
285	Metal Bollards
286	Yellow Ducting
287	Qty Plastic Grass Grid
288	Qty Plastic Grass Grid
289	Qty Plastic Grass Grid
290	Qty Plastic Grass Grid
291	Qty Plastic Grass Grid
292	Mobility Scooter & Charger
293	Cast Iron Fire & Stand

294	Water Pipe
295	Metal Chests
296	Dog Shed & Run
297	Wooden Beams
298	Wooden Sliding Door With Track
299	Shower Screens
300	Akro Props No 7
301	Pick Axe Head
302	Horse Rugs & Blankets
303	IBC Tanks
304	UPVC Black
305	Saw Dust Bags
306	Kitchen Table Extends
307	Book Case
308	Ikea Furniture
309	Qty Black Gutter & Fittings
310	Steel Lamp Post
311	Steel Camera Post
312	Qty Ducting / Drain Pipes
313	Aluminium Ladder
314	Aluminium Ladder
315	Bags Of Wood Chips
316	Large Wheel Barrow
317	Selection Hand Tools
318	Toolbox
319	Stable Door
320	Pine Doors
321	Man Hole Covers
322	Garden Planters
323	Qty Oak Beams
324	Qty Oak Beams
325	Fence Posts
326	Fence Posts
327	Wooden Front Door
328	200Ltr Drums
329	Free Standing Bath



330	Hardwood Door
331	Hardwood Door
332	Hardwood Door
333	Hardwood Door
334	Hardwood Door
335	Step Ladders
336	Roof Ladder
337	Scaffold Tower
338	Dog Kennel
339	Triple Extending Ladder
340	Hop Up Scaffolds
341	Barrels
342	Chestnut Pale Fencing
343	Roller Shutter
344	Roller Shutter
345	Two Bay Industrial Racking
346	Three Bay Industrial Racking
347	Three Bay Industrial Racking
348	Four Bay Industrial Racking
349	Four Bay Industrial Racking
350	Four Bay Industrial Racking
351	Five Bay Industrial Racking
352	Five Bay Industrial Racking
353	Five Bay Industrial Racking
354	Five Bay Industrial Racking
355	Six Bay Industrial Racking
356	Six Bay Industrial Racking
357	Two Bay Industrial Racking
358	Two Bay Industrial Racking
359	Three Bay Industrial Racking
360	Four Bay Industrial Racking
361	Five Bay Industrial Racking
362	Five Bay Industrial Racking
363	Six Bay Industrial Racking
364	Six Bay Industrial Racking
365	Four Bay Industrial Racking

366	Double Aluminium Ladder
367	Treble Aluminium Ladder
368	Aluminium Ladder 12'
369	Wheelbarrow
370	Scales
371	Antique Lorry Greaser
372	Antique Lorry Greaser
373	Miscellaneous
374	Miscellaneous
375	Miscellaneous
376	Miscellaneous
377	Miscellaneous
378	Miscellaneous
379	Miscellaneous
380	Miscellaneous
381	Miscellaneous
382	Miscellaneous
383	Miscellaneous
384	Miscellaneous
385	Miscellaneous
386	Miscellaneous
387	Miscellaneous
388	Pipe 18Ft X 1'
389	Roller Shutter Door
390	Various Oak Beams
391	Manhole Covers
392	Bollard Lights
393	Wooden Cable Reels
394	Wooden Staircase
395	Qty Stable Doors
396	Qty Gazebos
397	Aluminium Ladders
398	Scaffold Tower
399	200Ltr Plastic Water Barrels
400	Qty Nuts Bolts & Washers
401	Office Desk

402	Patio Slabs
403	Galvanised Door Canopy With Sides
404	Metal Sun Loungers
405	Running Machine
406	Qty Blue Pipe
407	Wheelchair Ramp
408	205L Plastic Barrels
409	205L Plastic Barrels
410	205L Plastic Barrels
411	205L Plastic Barrels
412	Sodium Workshop Lights
413	Composite Roller Shutter Door
414	Scaffold Tower
415	Scaffold Tower
416	Scaffold Tower
417	Plastic Tubs
418	Plastic Water Fitting
419	Plastic Water Fitting
420	Portable Lamps
421	Qty Grinding Discs
422	Man Hole Cover
423	Kerb Stones
424	Kerb Stones
425	Double Strip Lights With Covers
426	Double Strip Lights With Covers
427	Strip Light Bulbs
428	IBC Tank
429	IBC Tanks
430-440	Details On Sale Day

## Livestock Equipment, Troughs and Gates

441-450	Details On Sale Day
451	Galvanised Sheep Hurdles
452	Galvanised Sheep Hurdles
453	Half Round Sheep Feeder
454	Wall Mounted Water Troughs
455	Horse Door Gates
456	Corner Wall Mounted Hay Racks
457	Large Two Wheel Barrow
458	Alloy Gate
459	Shed Doors
460	8ft Wooden Gate
461	Cow Mattresses
462	Cow Mattresses
463	Cow Mattresses
464	Cow Mattresses
465	IAE 10ft Beef Feeder
466	IAE 8ft Beef Feeder
467	IAE 8ft Beef Feeder
468	Vink Automatic Footbath
469	12ft Metal Hay Rack
470	5ft Metal Hay Rack
471	4ft Metal Hay Rack
472	3ft Metal Hay Rack
473	Calf Creep Feeder 3pt Linkage Mounted
474	8ftx6ft Hvy Dty Oblong Feeder With Floor
475	15ftx5ft Feeder
476	15ftx5ft Feeder
477	15ft 6 Bar Galv Gate
478	15ft 6 Bar Galv Gate
479	10ft Hurdles
480	Feed Bin
481	Galvanised IBC Tank
482	Water Bowls
483	Electric Fence & Wire

484	Water Trough
485	Chicken Feeders
486	Farrowing Crate
487	Barred Gates 8Ft
488	Livestock Hurdles 4Ft x 8Ft
489	Livestock Hurdles 4Ft x 8Ft
490	Livestock Hurdles 4Ft x 8Ft
491	Galvanised Pig Arc
492	Qty Wooden Posts
493	Qty Wooden Posts
494	Qty Wooden Posts
495	Rolls Sheep Netting
496	Feed Barrier
497	Feed Barrier
498	Hook On Calf Troughs
499	Feed Barrier With Lockable Yolks
500	Cattle Crush
501	Qty Sheep Netting
502	Roll Plain Wire
503	Hen Pen
504	Roll Sheep Netting
505	Chicken Wire
506	Galvanised Feed Troughs
507	Sheep Hurdles
508	IAE Supreme Cow Cubicles 1900mm
509	Sheeted Sheep Hurdle 8Ft
510	Qty Peeled Posts 8Ft
511	Qty Peeled Posts 7Ft
512	Qty Posts 7Ft
513	Qty Sawn Square Posts
514	IAE Guillotine Sheep Race Gate
515	Qty Creosoted Posts 8Ft
516	Qty Creosoted Posts 8Ft
517	Qty 3m Rails
518	Galvanised Field Gates 4Ft
519	Galvanised Field Gates 4Ft

520	Galvanised Field Gates 4Ft
521	Galvanised Field Gates
522	Horse Netting
523	Sheep Netting Light Weight
524	Qty Creosoted Posts
525	Qty Creosoted Posts
526	Qty Creosoted Posts
527	Qty Creosoted Posts
528	Electric Poultry Netting
529	Calf De Horning Crate
530	Adjustable Gate Posts
531	various Metal Round Posts
532	3ft Metal Gate
533	7ft 6 Metal Gate "
534	15ft 6 Heavy Gates "
535	14ft 6 Heavy Gates "
536	14ft Heavy Gate
537	15ft Heavy Gate
538	14ft 3 Heavy Gates "
539	7ft 6 Sheeted Door "
540	15ft Livestock Barrier
541	15ft Livestock Barrier
542	15ft Livestock Barrier
543	12ft Livestock Barrier
544	Walk In Lamb Creep Feeder
545	Walk In Lamb Creep Feeder
546	Shearing Machine & Dropper
547	Qty Wooden Posts
548	Farm Gate
549	WOPA Foot Trimming Crush
550	Cattle Head Yolk
551	Electric Cattle Crush
552	Small Drinking Troughs
553	Sheep Hurdles
554	Bridlepath Gateway With Frame
555	Calf Pen Sides

556	AI Flask In Wooden Box
557	Big Steel Gate
558	Water Trough
559	Feed Fence
560	Sheep Hay Rack
561	Water Trough
562	Milk Buckets
563	Sheep Hay Rack
564	Leg Trough With Hay Rack
565	4 Tonne Feed Bin
566	Qty Sheep Netting
567	Qty Wooden Fencing Rails
568	IBC Water Bowser
569	Wooden Field Gates
570	Wooden Fencing Rails
571	Bateman Lamb Creep Feeder
572	6ft x 8ft Galvanised Door
573	10ft Galv Sheep Foot Bath
574	3 Way Shedding Gate
575	Non Return Gates
576	Sheep Forcing Gate
577	IAE Crusader Cattle Crush
578	Yard Gate 14'6 "
579	Yard Gate 14'
580	Pair Yard Gates 13'6 "
581	Field Gate 8'
582	Field Gate 6'
583	Field Gate 11'
584	Pair Sheeted Gate / Door
585	Yard Barrier / Gate
586	Pair Plastic Water Troughs
587	Tubular Cattle Crush
588	Metal Electric Fence Stakes
589	Plastic Electric Fence Stakes
590	Portequip Calf Creep Feeder
591	Portequip Calf Creep Feeder

592	IAE Calf Creep Feeder
593	Calf Creep Feeder
594	Richie Calving Gate
595	Calf Creep Gate
596	Selection Electric Fencers
597	LPG Generator 240V 3KW
598	Tray Workshop Tools
599	Qty Part Lights
600	Qty Van / Tractor Starter Motors
601	Qty Truck / Tractor Filters
602	Qty Workshop Spanners
603	Qty Workshop Tools
604	Qty Workshop Tools & Spanners
605	Hydraulic Pipes And Long Pipes
606	Qty Tractor Lights & Spares
607	Qty Tote Bins & Lin bins With Rack
608	Herman Mig Welder
609	Heating Oil Tank
610	Diesel Tank 1200 Ltrs
611	Qty Old Style International Weights
612	Pallet Off ATV Trailers
613	Chain Hoist & Lever Hoist
614	Chain Hoist & Lever Hoist
615	Large Steel Work Bench & Vice
616	Qty Tractor Spares
617	Qty Plough & Tractor Parts
618	Ifor Williams Canopy
619	Gas Welding Trolley & Torch
620	Poultry Killing Cones
621	Electric Fence Posts
622	Water Filter
623	Hang On Cattle Trough
624	Sheep Weigh Crate
625	Sheep Foot Bath
626	Guillotine Gate
627	Drafting Gate



628	Lamb Creep Feeder Bateman
629	Lamb Creep Feeder IAE
630	Lamb Creep Feeder IAE
631	Lamb Creep Feeder
632	Wooden Gate 12'
633	Wooden Gate 12'
634	Wooden Gate 12'
635	Wooden Gate 12'
636	Wooden Gate 12'
637	Wooden Gate 12'
638	Wooden Gate 12'
639	Calf Drinker
640	Ring Feeders
641	Fence Posts
642	Coarse Calf Ration
643	Calf Feeder Fronts
644	Spring Barley 500kg
645	Qty Creosoted Posts & Rails
646	Steel Gate
647	Sheep Hurdles
648	Creosoted Gate 12'
649	Creosoted Gate 10'
650	Creosoted Gate 6'
651	Qty Rachets & Straps
652	Galvanised Steel Gate
653	Galvanised Line Wire
654	Qty Posts
655	Qty Posts
656	Qty Square & Round Posts
657	Qty Creosoted Bearers
658	Timber Field Gate 8'
659	Timber Field Gate 9'
660	Timber Field Gate 10'
661	Timber Field Gate 11'
662	Timber Field Gate 11'
663	Roll Galvanised Weld Mesh

664	Roll Green Weld Mesh
665	Roll Green Weld Mesh
666	Roll Green Weld Mesh
667	Roll Galvanised Weld Mesh
668	Roll Galvanised Weld Mesh
669	Plastic Poultry Crate
670	Wooden Poultry Crate
671	Plastic Poultry Crate
672	Livestock Door
673	Livestock Door
674	Plastic Calf Feeder Trough
675	Sandstone Gateposts
676	Sandstone Gateposts
677	Sandstone Gateposts
678	Galvanised Poultry Feeders
679	Galvanised Gate
680	Sheep Rack
681	Corn Trough
682	Cattle Crush
683	Pig Farrowing Crate
684	Rectangular Feeder
685	Galvanised Sheeted Doors
686	Electric Fence Stakes
687	Feed Barriers
688	Feed Barrow
689	Hang On Hay Rack
690	Qty Calf Pen Fronts
691	Qty Calf Pen Hay Racks
692	Qty Gates
693	Cattle Crush
694	Cattle Crush
695	Sheep Scales
696	Electric Fencer & Posts
697	Hay Rack On Wheels
698	Hay Rack On Wheels
699	Lamb Creep Feeder

700	Lamb Creep Feeder Square
701	Hogg Feeder
702	Sheep Hurdles
703	Ring Feeder Sheep
704	Ring Feeder Sheep
705	Sheep Foot Bath
706	Metal Field Gate
707	Molasses Feeders
708	Molasses Feeders
709	Water Trough
710	Sheep Netting
711	Sheep Feed Trough
712	Sheep Scanner Ovi Scan 4
713	Sheep Troughs
714	Sheep Troughs
715	Footbath
716	Footbath With Hurdles & Gate
717	Lamb Creep Feeder
718	Hay Rack
719	Turnover Crate
720	Lamb Weigh Crate
721	Gate 12'
722	Cattle Feed Barrier
723	Wooden Gate
724	Electric Fence Posts
725	Electric Fence Posts
726	Electric Fence Posts
727	Electric Fence Posts
728	Electric Fence Posts
729	Electric Fence Energisers
730	Electric Fence Energisers
731	Electric Fence Energisers
732	Electric Fence Energisers
733	Electric Fence Energisers
734	Electric Fence Energisers
735	Electric Fence Wire

736	Electric Fence Wire
737	Electric Fence Units
738	Electric Fence Units
739	Electric Fence Units
740	Electric Fence Units
741	Double Water Drinkers
742	Single Locking Feed Fence
743	Wooden Gate 8'
744	Wooden Gate 12'
745	Wooden Gate 11'
746	Chicken Pen & Run
747	Portable Milking Machine
748	Calf Water Bowls
749	Bird Scares
750	Sheep Dip
751	KMR Fencing Staple Gun
752	Sheep Net Tensioning Clamps
753	Galvanised Palisade Fencing
754	Sheep Scales
755	Sheep Cradle Feeder
756	Sheep Hurdle 8'
757	Barbed Wire
758	Electric Horse Tape
759	Galvanized Feed Box
760	Galvanized Feed Box
761	Galvanized Feed Box
762	Galvanized Feed Box
763	Galvanized Feed Box
764	Galvanized Feed Box
765	Galvanized Feed Box
766	Large Round Water Trough
767	Cattle Crush
768	Corner Hay Rack
769	Box Sheep Raddles
770	3 in 2 Creep Feeder
771	Wooden Gate Post

772	Feed Barriers With Trough
773	Free Standing Feed Troughs
774	Mushroom Cubicles
775	Metal Sliding Door
776	Parlour Floor Tiles
777	Water Trough
778	Metal Hay Racks
779	Cow Water Bowls
780	AI Semen Warmer
781	Calf Bucket Holders
782-800	Details On Sale Day

## **Garden Equipment, Collectables, Troughs and Mowers**

### **12 Noon**

801-810	Details On Sale Day
811	Single Furrow Horse Plough
812	Mill Stones
813	Metal Cart Wheels
814	Roll Top Bath
815	Chicken House
816	Antique Radiator
817	Antique Clay Drainage Pipes
818	Blue Glazed Garden Pots
819	Antique Ornament Gate
820	Bunch Garden Tools
821	Pair Saddle Stones
822	Garden Seat
823	Belfast Sinks
824	Milk Churns
825	Sattley o/c Stationary Engine
826	Greenhouse Heater
827	Ornate Stone Fire Place
828	Small Anvil
829	Gents Hybrid Bicycle
830	Cast Iron Machine Leg Stands
831	Fencing Tools Inc Auger

832	Four Wheeled Hand Cart / Trolley
833	Selection Of Gate Furniture
834	Wooden Garden Furniture
835	Wooden Garden Furniture
836	Chimney Pot
837	Large Chimney Pot
838	Large Chimney Pot
839	Patio Garden Seats
840	Patio Tabel & Chairs
841	Petter AI Stationary Engine
842	Petter AI Stationary Engine
843	Petter AI Stationary Engine
844	Lister D Stationary Engine
845	Lister D Stationary Engine
846	Dolly Tub
847	Galvanised Trough 4'
848	Log Saw Horse
849	Vintage Hay Racks
850	Vintage Paraffin Hurricane
851	Vintage Hayracks
852	Stone Trough
853	Garden Chairs
854	Garden Bench
855	Garden Bench
856	Details On Sale Day
857	Details On Sale Day
858	Copper Coal Bucket
859	Garden Ornaments
860	Strawberry Planter
861	Scythe
862	Garden Fork
863	Garden Roller
864	Stainless Steel Milking Bucket
865	Crowbar, Rubber Mallet & Sledge Hammer
866	Hedging Tools
867	Circular Iron Climbing Frame

868	Planter Trough
869	Small Trough & Saddle Stone
870	Natural Stone & Saddle Stone
871	Bird Bath
872	Planter Trough
873	Jerry Cans
874	Sand Stone Trough 5Ft
875	Cast Iron Garden Table & Chairs
876	Garden Stoles
877	Dog Crate
878	Large Metal Derby Co-Op Milk Churn
879	Suffolk Punch Cylinder Mower
880	Fire Grate With Back Plate
881	Pallets Of Rockery Stone
882	Circular Cast Iron Pig Trough
883	Circular Cast Iron Pig Trough
884	Belfast Sink With Taps
885	Belfast Sink Square
886	Belfast Sink Standard
887	Hayrake Cast Wheels
888	Plastic Water Butts
889	Blacksmith Horse Shoe Clamp
890	Friesian Cow Wooden Sign
891	Sandstone Rockery Rocks
892	Tin Shell Petrol Cans
893	Tin Shell Petrol Cans
894	Small Avery Scales
895	Garden Ornament
896	Garden Ornament
897	Fire Grate
898	Victorian Cellar Grate
899	Milk Churns
900	Milk Churns
901	Sack Trucks
902	Garden Roller
903	Milk Churns

904	Milk Bucket
905	Sheep Clippers & Knives
906	Sheep Clippers & Knives
907	Sheep Clippers, Knives, Lamps
908	Potato Scales & Weights
909	Ali Goods
910	Cast Iron Cow / Horse
911	Watering Cans
912	Metal Buckets
913	Brass Copper Goods
914	U Links & Shackles
915	Holly Trees
916	Poultry Crate & Troughs
917	Patio Set
918	Old Horse Tack Brass
919	Garden Features Cast Rabbit / Frog
920	Belfast Sink
921	Cast Iron Street Lamp
922	Water Trough Riveted
923	Ironstone Rock
924	Ironstone Rock
925	Milk Churn
926	Round Flower Planters
927	White Sinks
928	Vintage Cultivator
929	Garden Chairs
930	Fire Surround & Fender
931	Wood Burning Stove
932	Childrens Tables & Chairs
933	Ornate Metal Bird Feeder Stand
934	Cart Wheels On Axle
935	Aluminium Churns
936	Aluminium Churns
937	Steel Churn
938	Double Cattle Water Troughs
939	Double Cattle Water Troughs



940	Steel Water Trough
941	Galvanised Dustbins
942	Pair Iron Gate Posts
943	Kubota RTV 900
944	4 Wheel Garden Trolley
945	Sandstone Slabs
946	Garden Bird Bath Or Planter
947	Vintage Garder Hand Ridger & Rack
948	Greenscentary Push Mower Vintage
949	Qty Garden Hand Tools
950	Qty Wartime Ammo Boxes
951	Chainsaw & Hedge Cutter
952	Old 5G Oil Drums & 2G Cans
953	BSA Stationary Engine
954	JAP Engine & Army Generator
955	JAP Stationary Engine
956	Petter Stationary Engine
957	Vintage Metal Barrel
958	Petter A1 Stationary Engine
959	Lister D Stationary Engine
960	Petter Petrol / Parafin Engine
961	Bamford & Wolesley Engines
962	Small Stone Troughs
963	Small Stone Mushrooms
964	Stone Bird Bath
965	Stone Earns
966	Enamel Sinks
967	Terracotta Rhubarb Pot
968	Stone Water Feature
969	Chimney Pots
970	Large Stone Mushroom
971	6Ft X 2Ft Stone Trough
972	5Ft X 2Ft Stone Trough
973	Shovels & Forks
974	Garden Tools
975	Fordson Toolbox & Tools

976	Hand Saws & Tools
977	Heavy Hand Toolbox & Tools
978	Churns & Spare Lid
979	Sandstone Troughs
980	Vintage Horse Drawn Wooden Hay Rake
981	Weather Clock
982	PTO Belt Pulley
983	Water Tanks
984	Cast Iron Bath
985	Sandstone Gate Post
986	Sandstone Flag Stones
987	Wooden Planters
988	Milk Churns
989	Garden Ornaments
990	Stainless Bucket Unit
991	Push Mower
992	Childrens Play Shed
993	Copper Fender
994	Tall Fire Guard
995	Qty Wood Planes
996	Enamel Sign
997	Chimney Pots
998	Chimney Pots
999	Churn With Lid
1000	Churn With Lid
1001	Churn Trolley
1002	Jerry Cans
1003	(7' x 2' x 2') Stone Trough
1004	(7' x 2' x 2') Stone Trough
1005	(7' x 2' x 2') Stone Trough
1006	Viking Lawn Mower
1007	Electric Strimmer
1008	Mountfield Petrol 4 in 1 Multi Tool
1009	Leaf Sweeper
1010	Lawn Mower
1011	Stihl Chainsaw

1012	Mountfield Rotavator
1013	Makita Hedge Cutter
1014	Ride On Lawn Mower
1015	Macallister Hedge Cutter
1016	Chain Saw
1017	Chain Saw
1018	Honda HR 173 Lawn Mower
1019	Chimney Pots
1020	Wooden Planters
1021	Mail Box
1022	Qty Garden Equipment
1023	Wooden Gates
1024	Atco Mower
1025	Hayter Mower
1026	Echo Strimmer
1027	Sthil Chain Saw
1028	Westwood Grass Collector
1029	Allen Hover Mower
1030	Flymo Lawn Mower
1031	Yardman Ride On Mower
1032	Petrol Strimmer
1033	Spear & Jackson Rechargeable Strimmer
1034	Small Rechargeable Garden Strimmer
1035	Westwood Ride On Mower
1036	Mountfield 1436 Ride On Mower
1037	Mountfield T30 M Ride On Mower
1038	MTD Lawn Flite Ride On Mower
1039	Wolf Self Propelled Lawn Mower, Electric
1040	Wolf 200cc Self Propelled Lawn Mower
1041	Honda Lawn Mower
1042	Petrol Strimmer
1043	Chain Saw
1044	Chain Saw
1045	Petrol Strimmer
1046	Woodchipper
1047	Husqvarna Strimmer

1048	Chainsaw
1049	Chainsaw
1050	Generator 12V 240V
1051	Husqvarna Blower
1052	Strimmers
1053	Lawn Mower
1054	Mountfield 2 Stroke Mower
1055	Solo Chain Saw
1056	Petrol Strimmer
1057	Petrol Strimmers
1058	Petrol Hedge Cutter
1059	Sthil Strimmer
1060	Sthil Hedge Cutter
1061	Petrol Hedge Cutter
1062	Petrol Chain Saw Husqvarna
1063	Benassi Leaf Vacuum Honda Engine
1064	Hayter Hayterette Mower
1065	240v Electric Motor
1066	Scag Mower
1067	Scag Filters & Belts
1068	Scag Blades
1069	Stihl Long Reach Hedge Trimmer
1070	Stihl Chain Saw
1071	Stihl Backpack Strimmer
1072	Ride On Lawn Mower
1073	Webb Rotary Lawn Mower
1074	Lawn Mower
1075	Lawn Mower
1076	Ride On Mower
1077	Strimmer
1078	Ransomes Ride On Mower
1079	Stihl Chain Saws
1080	Stihl Hedge Cutters
1081	Strimmers - Spares
1082	Petrol Lawn Mower
1083	Lawn Mower

1084	Lawnflite Petrol Mower
1085	Lawnflite Petrol Mower
1086	Lawn King Petrol Mower
1087	Old Lawn Mower
1088	Lawnflite Ride On Mower
1089	Various Garden Tools
1090	Various Garden Tools
1091	Petrol Strimmer
1092-1100	Details On Sale Day

## **CUSTOMER REGISTRATION**

You **MUST** register to bid at the 2024 Darley Moor sale.

### **New Customers**

You must register in person at the site office - **OFFICE 1 (PAY OFFICE)** on Thursday 18th or from 7.30am on the morning of the sale.

### **Existing Customers**

Please call the on site mobile phone on 07757 668228 to obtain your Bagshaws computer number on Wednesday 17th April & Thursday 18th April only.

**All purchasers must obtain EITHER a bidding number or computer number**

## **AUCTION 2 (Commencing at 10am)**

### **Tractor Sundries, Small Plant and Tools**

1101-1110	Details On Sale Day
1111	Luggage Top Box For Car
1112	Torque Bar Spanner
1113	Welder
1114	Air Guns
1115	Box Scania Parts
1116	Trailer Support
1117	Roll Up Cement Hoses
1118	Heating Oil Tank
1119	Compressor
1120	Pair Silage Tynes
1121	Large Lifting Strap
1122	PTO Air Compressor
1123	Qty Brushes / Forks
1124	Qty Brushes / Forks
1125	Karcher 620m Pressure Washer
1126	Heavy Duty Bench
1127	6 Vice "
1128	Car Creeper
1129	Tow Chain
1130	Ferguson Top Link
1131	African How Tow Bar
1132	Ropes
1133	Plastic Fuel Tank
1134	Bund For IBC
1135	1100 Litre Diesel Tank With Hose
1136	Food Grade IBC Clean
1137	Food Grade IBC Clean
1138	Food Grade IBC Clean
1139	Petrol Pressure Washer
1140	Safe With Keys
1141	Hardi Sprayer Parts
1142	Aluminium Trailer Strap Box
1143	Floor Grinder

1144	Red Band Floor Grinder
1145	Tractor A Frame
1146	Warwick Pressure Washer
1147	Single Phase Morticing Machine
1148	Single Phase Bench Saw
1149	Single Phase Compressor
1150	Carpenters Clamps
1151	Single Phase Small Trend Router
1152	Thy Mig 500 Mig Welder
1153	Craft Single Phase Bench Mounted Drill
1154	Box of Spanners And Tools
1155	Stihl Chain Saw
1156	Small Single Phase Mini Compressor
1157	Box Of Sockets
1158	Two Petrol Generators
1159	Petrol Generator
1160	Belle Electric Concrete Mixer
1161	Three Phase Compressor
1162	Boxes Of Woodworkers Tools
1163	Boxes Of Woodworkers Tools
1164	Details On Sale Day
1165	Details On Sale Day
1166	Details On Sale Day
1167	Details On Sale Day
1168	Details On Sale Day
1169	Details On Sale Day
1170	Details On Sale Day
1171	Details On Sale Day
1172	Details On Sale Day
1173	Details On Sale Day
1174	Details On Sale Day
1175	Details On Sale Day
1176	Details On Sale Day
1177	Details On Sale Day
1178	Details On Sale Day
1179	Various 110V Tools

1180	Various 110V Transformers
1181	Box Of Spanners
1182	Two Bottle Jacks
1183	Bottle Jack
1184	Sack Truck
1185	Boxes Of Nails
1186	Boxes Of Nails
1187	Boxes Of Washers
1188	Four G Clamps
1189	Three G Clamps
1190	Various Stilsons & Hand Tools
1191	Toolbox
1192	Toolboxes
1193	Bottle Jack
1194	Air Driven Nail Guns
1195	Carpenters Box With Tools
1196	Post Hole Borer
1197	Treaded Bar
1198	Road Cones
1199	Qty Lely Splendimow New
1200	Qty Lely Blades & Spares
1201	PTO Shafts
1202	Compressor Pump
1203	Sack Truck & Barrow
1204	Heavy Duty Bench & Vice
1205	Pipe Vice
1206	Ganterey Slide & D Links
1207	Hydraulic Rams
1208	Man Hole Covers
1209	Pipe Lifter
1210	JCB Forks
1211	Security Bollard
1212	Scaffold Clips
1213	Jack Hammer
1214	Disc Cutter
1215	Qty Tools



1216	Qty Tools
1217	Hydraulic Ram
1218	Jack Hammer
1219	Disc Cutter
1220	Jack Hammer
1221	Qty Tools
1222	Jack Hammer
1223	Qty Tools
1224	Jack Hammer
1225	Plastic Truck Tool Box
1226	Large Gas Space Heater
1227	3T Axle
1228	Canopy For Toyota Hilux
1229	Petrol Pressure Washer
1230	240V Pressure Washer
1231	Qty Corded Power Tools
1232	Heavy Duty Tow Chain
1233	3T Lifting Slings
1234	Qty Trailer Spares
1235	Qty Vehicle Spares & Oil
1236	Hydraulic Rams
1237	Matbro Coney Pin Brackets
1238	Petrol Power Washer
1239	Heavy Duty Jockey Wheel
1240	Roll Of Mig Wire
1241	Castrol Oil Dispenser
1242	Storage Bin On Wheels
1243	Storage Bin On Wheels
1244	Dromone Hydraulic Quick Hitch 13T Digger
1245	Discovery Electric Tow Bar
1246	Man Basket
1247	Drum JCB Universal Oil
1248	Drum Tractor Oil
1249	Ifor Williams Wheel Tyre
1250	Qty Steel Framed Mesh Panels
1251	Qty Steel Framed Mesh Panels

1252	Ifor Williams Wheel & Tyre
1253	Knott Trailer Hitch
1254	Ifor Williams Wheels & Tyres
1255	MF 6615 Bonnet
1256	2 Karcher Lances And Hose
1257	Work Bench With Vice
1258	Quad Bike Ground Anchor
1259	Honda Water Pump & Hoses
1260	12V Battery Charger
1261	Single Phase Compressor
1262	Car Ramps
1263	Single Phase Bench Drill
1264	Bottle Jacks
1265	Back Pack Sprayer
1266	Builder Lazer Stand & Staff
1267	Submersible Pump
1268	Qty Lifting Straps
1269	Grease Bucket
1270	Clarke Air Industrial Compressor
1271	Fibre Glass Truckman Top
1272	Ifor Williams Galvanised Back
1273	10 Tonne Trolley Jack
1274	Selection Of Filters
1275	Selection Beacons & Lights
1276	3 Phase Steam Cleaner
1277	3 Phase Mig Welder
1278	Concrete Tractor Weight
1279	Pair Braked 5 Stud Axles
1280	Pair Braked 5 Stud Axles With Cables
1281	Isuzu Rodeo Roller Shutter Back
1282	David Brown 25D Swinging Draw Bar
1283	JCB 3CX 9 Bucket "
1284	Air Compressor
1285	Pressure Washer
1286	Tower Scaffold
1287	Sack Truck

1288	Jockey Wheels
1289	Bunded Metal Fuel Tank
1290	Flashing Beacons
1291	Lens & Mirrors For HGV
1292	Key Clamp Railing Fittings & Pipe
1293	JCB Hydroclamp for JCB 3CX
1294	Mercedes Sprinter Wheels & Tyres
1295	Trailer Wheels & Tyres
1296	Chains & Straps
1297	Portable Bunded Fuel Tank
1298	Sewer Rods
1299	Petrol Jet Wash
1300	Fireball Gas Heater
1301	Belle Plate Compactor
1302	Belle Plate Compactor
1303	Wacker Neuson Plate Compactor
1304	Submissible Pump 110v
1305	Submissible Pump 110v
1306	110v Power Tools
1307	110v Magnetic Drill
1308	Evolution Chopsaw
1309	Pair Cage Wheels
1310	Pair Telescopic Wheel Centres
1311	Platform Trolley
1312	Platform Trolley
1313	Platform Trolley
1314	Pallet Trucks Spares/Repair
1315	Pallet Truck
1316	Platform Steps
1317	Large Lorry Jack Stands
1318	Rear Gates For Cattle Lorry
1319	Internal Doors For Cattle Lorry
1320	Stephill Generator
1321	Ratchet Straps
1322	Detail On Sale Day
1323	Detail On Sale Day

1324	Detail On Sale Day
1325	Broughton Timber Winch
1326	1200 Litre Diesel Tank
1327	Euro Brackets
1328	Euro Brackets
1329	Hay Tedder Wheels
1330	PTO Pressure Washer
1331	Heavy Work Bench With Vice
1332	Row Crop Wheels & Tractor Bonnett
1333	Misc Spares
1334	Super Major Wheels & Tyres
1335	Diesel Compressor
1336	Assortment Petrol Cans
1337	Heavy Bench Vice
1338	Set Spanners
1339	Bench Grinder & Bench Drill
1340	Angle Grinder & Discs
1341	Box Of Tools
1342	Step Ladders
1343	Jack For Mower
1344	Set Of Ramps
1345	Stephill 6kva Generator
1346	Grabber Tyres
1347	Mitsubishi Chrome Under Run Bars
1348	Discovery TD5 Body Panels
1349	Nissan Navara Tail Gate
1350	Tractor Dual Wheels
1351	Trailer Side Boards
1352	Weld On Bucket Brackets
1353	Weld On Bucket Brackets
1354	Weld On Bucket Brackets
1355	JCB Cab Lights
1356	Milwaukee Grease Gun
1357	Aluminium Loading Ramps
1358	Details On Sale Day
1359	Details On Sale Day

1360	Details On Sale Day
1361	Details On Sale Day
1362	Details On Sale Day
1363	Castrol Oil Cabinet
1364	Large Avery Scales
1365	Empty Easy Skip
1366	Empty Easy Skip
1367	Trailer Side Boards
1368	Trailer Side Boards
1369	Slurry Tanker Couplings
1370	Ford 7810 Exhaust
1371	Bottle Jack
1372	Honda Generator 240v / 110v
1373	Gas Heater
1374	Battery Powered Hand Drill
1375	Battery Powered Hand Drill
1376	Battery Powered Hand Drill
1377	Saw Blades
1378	Saw Blades
1379	3 Phase Steam Cleaner
1380	240v Pressure Washer
1381	Marshall Muck Spreader
1382	Bamfords Wuffler Belt
1383	Fordson Major Engine Block
1384	Tractor Roll Bar Spares Massey Ferguson
1385	Wheels & Tyres
1386	Cable Ducting
1387	Implement Wheels & Tyres
1388	T20 TEF Radiator
1389	Stihl Power Washer
1390	Compressor
1391	Vacuum Pump Oil
1392	Harvey Frost Engine Crane
1393	Log Splitter
1394	Easy Lift Pickup Trailer Crane
1395	Manitou Pick Up Hitch

1396	Euro 8 Weld On Brackets
1397	Quad Bike Barrow
1398	Claas Tractor Toolbox
1399	Single Phase Mig Welder
1400	Qty Rope
1401	Trolley Jack
1402	Stop tap & Connectors
1403	Big Baler Knotters
1404	Qty PTO Shafts
1405	Hydraulic Ram
1406	Hydraulic Ram
1407	Stocks Dual Wheel Eyes
1408	Qty Car Parts
1409	Transmission Jack
1410	8 Tonne Hi Lift Jack
1411	Western 2000 Ltr Diesel Tank
1412	For Lift Tipping Skip
1413	Fork Lift Tipping Skip
1414	Work Bench With Vice
1415	Pedestrian Barriers
1416	Hot Pressure Washer
1417	Tractor Tyres
1418	Stihl Petrol Disc Cutter
1419	Evolution Electric Disc Cutter
1420	Augers For Handheld Petrol Borers
1421	110v Mag Drill & Grinders
1422	Air Operated Pot Riveter
1423	Hydraulic Spool Valves
1424	Hydraulic Test Gauges
1425	Hydraulic Pipes With Fittings
1426	Ex Army Ammo Boxes
1427	Ex Army Ammo Boxes
1428	Battery Charger
1429	Large Sodium Lamp
1430	Sodium Lamps
1431	LED Lights

1432	12v Flashing Lights
1433	Petrol Chain Saw
1434	Steam Cleaner
1435	Diesel Generator
1436	Diesel Generator
1437	Tractor Pallet Tines
1438	Tractor Pallet Tines on Small Frame
1439	Block & Tackle
1440	Box Assorted Electric Tools
1441	Stihl Disc Cutter
1442	Stihl Disc Cutter
1443	Petrol Dinner
1444	Stihl Disc Cutter
1445	Stihl Disc Cutter
1446	Stihl Disc Cutter
1447	Stihl Disc Cutter
1448	Partner Disc Cutter
1449	Partner Disc Cutter
1450	Partner Disc Cutter
1451	Partner Disc Cutter With Spares
1452	Trailer Rim & Tyre
1453	Welder Generator
1454	Heavy Duty Trolley Jacks
1455	Aluminium Sack Truck
1456	Plastic Diesel Tank
1457	Gas Cylinder Trolley
1458	6ft Digger Bucket
1459	2ft Digger Bucket
1460	16 Digger Bucket
1461	1ft Digger Bucket
1462	1ft Digger Bucket
1463	Donkey Saw
1464	Compressor
1465	Mitas Tyres, 6 Stud
1466	Fibre Glass Generator Cabinet
1467	110v Chop Saw

1468	3 Phase Compressor
1469	Builders Trestles
1470	110 Volt Angle Grinder & Discs
1471	Pick Up Hard Top
1472	Massey 35 Loader c/w Brackets
1473	Pallet Misc Electrical Tools
1474	Cement Mixer 240v
1475	Qty Low Bay Lights
1476	Qty Low Bay Lights
1477	Qty Low Bay Lights
1478	3 Phase Steam Jet Wash
1479	Military Boxes
1480	Military Boxes
1481	Military Boxes
1482	5 Hole Trailer Rims
1483	Clarke Metal Worker Drill
1484	Pillow Drill
1485	Hydraulic Brake Hoses
1486	Makita Compressor
1487	Saw
1488	Selection Tow Bars
1489	G Clamps
1490	Loadall Tyre & Rim
1491	Fordson Major Rim
1492	Brick Crane Grab
1493	BMW Rims & Tyres
1494	Ford Ranger Rims & Tyres
1495	Ratchet Pullers
1496	Tractor Seat (Electric)
1497	Titan 1250ltr
1498	Titan 2500ltr Tank
1499	JCB Breaker Pack
1500	Floor Saw Clipper c99
1501	Clarke Tiger 3000 Jet Washer (Petrol)
1502	Clarke Mig Welder 205TE
1503	Hydraulic Hoses & Air Compressor Hose



1504	Roof Rack For Transit
1505	Banding Gun & Stand
1506	Grease Guns
1507	Digger Bucket JCB
1508	Belle Compaction Plate
1509	Cut Off Saws
1510	Digger Bucket
1511	Digger Bucket
1512	Digger Bucket
1513	Pressure Washer Hot & Cold
1514	Ditching Bucket
1515	Sucker / Blower PTO Driven
1516	Small Air Compressor
1517	Petrol Pressure Washer
1518	Sthil Chainsaw
1519	Sthil Cut Off Saw
1520	Isuzu D Max Body
1521	Diesel Saw Bench
1522	Front Wheels T20
1523	Electric Roller Mill 3 Phase
1524	Mig Welder 240V
1525	Nederman Industrial Vacuum 110V
1526	Roof Rack
1527	Land Rover Defender 90 Single Cab Roof
1528	Petrol Generator Honda
1529	Balmoral 1000L Tank
1530	Balmoral 1000L Tank
1531	Balmoral Tank BH3410
1532	Static Fuel Oil Tank
1533	NH Turf Tyre Set
1534	Tool Storage Box
1535	Manual Pump Truck
1536	Wheels & Tyres 16.9-28
1537	Wheels & Tyres 16.9-34
1538	Row Crop Wheels
1539	Digger Bucket 4

1540	Set Lorry Step & Platform
1541	Drainage Tank & Lid
1542	Set Of Steps
1543	Set Of Steps
1544	Set Of Steps
1545	Pump Truck
1546	Pump Truck
1547	Pump Truck
1548	Pump Truck
1549	Lorry Steps
1550	Fork Truck Engine Lift
1551	Fork Truck Tines
1552	Fork Truck Tines
1553	Fork Truck Man Cage
1554	Step Stainless Platforms
1555	Miscellaneous
1556	Miscellaneous
1557	Miscellaneous
1558	Miscellaneous
1559	DeWalt Saw Bench
1560	Generator
1561	MF Rear Wheels 12.4 R28
1562	Bunded Diesel Tank 1000Ltr
1563	Western Spread Tyres
1564	Carpet Spike With Back Plate
1565	Ditching Bucket 8T
1566	Qty Mini Digger Buckets
1567	NH Front Fan Tractor Weights
1568	Claas Front Tractor Weights
1569	Qty Tractor Top Links
1570	Qty Tractor Draw Bars
1571	MF 290 Doors & Window
1572	Digger Bucket
1573	Trenching Bucket JCB 130 2ft
1574	Trenching Bucket JCB 130 2ft
1575	Levelling Blade JS130

1576	Ditching Bucket JS130
1577	215-60-17 Tyre With Rim
1578	Single Phase Stick Welder
1579	Honda Generator
1580	Diesel Stand
1581	Strong Bench
1582	Silenced Diesel Generator 10KVA
1583	Petrol Pressure Washer
1584	Single Phase Stick Welder
1585	Bench Pillar Drill
1586	Single Phase Compressor 150L
1587	8Ft Rake For 13T Digger
1588	Hand Held JC B Hydraulic Breaker
1589	Pair NH Rear Fenders
1590	Baler Knife Sharpener
1591	Merlo Crane Winch
1592	Artic Wheel & Tyre Rims
1593	Drain Regulator 6 Inch
1594	Caterpillar Air Compressor
1595	Mini Digger Bucket 2Ft
1596	Toothed Mini Digger Bucket
1597	Graham Edwards Trailer Axle
1598	Oxy-Acetylene Gas Kit & Trolley
1599	Land Rover Series 3 Rear Door
1600	Land Rover Series 3 Cat Flap With Glass
1601	Land Rover Series 3 Original Door Tops
1602	Wheel Removing Trolley
1603	Wheel Removing Trolley
1604	Box Drill
1605	Wheel & Rim 100 X 80 X 12
1606	Wheel & Rim 11.5-80-15.3
1607	Qty PTO Shafts
1608	Wheel Changer
1609	Karcher Industrial Pressure Washer
1610	Wacker Plate 18 Honda Engine
1611	Kroll Waste Oil Burner

1612	Tyre Changer Manual
1613	Ifor William Cattle Trailer Partition
1614	Karcher Pressure Washer/Steam Cleaner
1615	Honda Whacker Plate
1616	Air Compressor
1617	Air Compressor
1618	Jump Start Kit
1619	Swivel Scaffold Clips
1620	Herras Fence Clips
1621	Kubota Mower Blade
1622	Massey Ferguson Weights
1623	Pallet Extensions
1624	Knapsack Sprayers
1625	Knapsack Sprayers
1626	John Deere Mower Blades
1627	Vintage Car Lights
1628	Vintage Car Parts
1629	Sack Truck
1630	Avery Scales
1631	Massey Ferguson Front Loader
1632	Compressor
1633	Concrete Mixer
1634	Fuel Tanks
1635	Space Heater
1636	PTO Shaft
1637	Metal Shelves
1638	Discovery Rims
1639	New Holland Tractor Mud Guards
1640	Chainsaw
1641	Hallamshire Scales
1642	Manitou Bracket
1643	Chilton Bracket
1644	Fork Truck Barrel Clamp
1645	Vermin Control Boxes
1646	Vermin Control Boxes
1647	Lorry Storage Box Stainless Steel

1648	Lorry Storage Box Stainless Steel
1649	Lorry Storage Box Stainless Steel
1650	Lorry Storage Box Stainless Steel
1651	Small Storage Containers
1652	Brittool Tool Chest
1653	Teng Tool Chest
1654	Double Head Pedestal Grinder
1655	Farmyard Spotlights
1656	Two Wheel Sack Barrow
1657	Set Car Ramps
1658	Crocodile Saw
1659	Stringer Lights
1660-1690	Details On Sale Day

## **CUSTOMER REGISTRATION**

You **MUST** register to bid at the 2024 Darley Moor sale.

### **New Customers**

You must register in person at the site office - **OFFICE 1 (PAY OFFICE)** on Thursday 18th or from 7.30am on the morning of the sale.

### **Existing Customers**

Please call the on site mobile phone on 07757 668228 to obtain your Bagshaws computer number on Wednesday 17th April & Thursday 18th April only.

**All purchasers must obtain EITHER a bidding number or computer number**

## **AUCTION 3 - (Sale to Commence at 10.30am Prompt)**

### **Cultivation Equipment, Fertilizer Spreaders, Loader Attachments and General Machinery**

1691-1700	Details On Sale Day
1701	Bobcat Pallet Fork
1702	Yard Scraper
1703	Grain Milling Hopper & Auger
1704	Sweepex 8ft Brush (JCB Brackets)
1705	Chilton MX 40 Loader Boom
1706	Massey Ferguson 873 Loader Boom
1707	4ft Loader Bucket
1708	Abiljo 2.4m Blade With Angling Bracket
1709	Solar Park Sprayer (12 Metre)
1710	8ft Roller With Wheel Kit & Brakes
1711	Shear Grab C/W Pin & Cone
1712	Loader Tractor Bucket c/w Euro Brackets
1713	Qfit Brackets Bale Spike
1714	Galvanised Yard Scraper
1715	Powder Applicator For Baler/Forage Harvester
1716	Amazon 1500 Twin Disc Fert Spreader
1717	Log Splitter
1718	Grays Push Off Buckrake
1719	Vicon Rota Flow Fert Spreader
1720	David Brown Vintage Ridger (2 Row)
1721	Tractor Bucket (Euro Brackets)
1722	Fleming Transport Box
1723	Yard Scraper
1724	Bale Spike
1725	Bentall Roller Mill (3 Phase)
1726	Lemken Press Bracket & Ram
1727	Chilton Headstock, Chilton Attachments
1728	Overum 4 Furrow Reversible Plough
1729	Wessex 1.8m Finishing Mower
1730	Compact Tractor Bucket and Pallet Forks
1731	Paddock Hoover (Needs Switch)
1732	Rytec Truck Loader Hoover

1733	12ft Folding Chain Harrow
1734	PTO Driven Pan Concrete Mixer
1735	Baur PTO Slurry Pump
1736	Amazone Twin Disc Fert Spinner
1737	8ft Ballast Roller
1738	Suton Bucket Brush With Merlo Brackets
1739	Telehandler Bucket With JCB Compact Brackets
1740	Technoma Maxi5 20 Mtr Sprayer
1741	Slug Pelleter
1742	Weaving Sub Disc (3.5m)
1743	Cambridge Roll Rings
1744	Cambridge Roll Rings
1745	Buck Rake Frame (Spares/Repairs)
1746	Cambridge Roller 7ft
1747	Dutch Harrow 12ft
1748	Round Bale Wrapper
1749	Storth Slurry Stirrer
1750	Ransome Discs
1751	Twin Leg Sub Soiler With Steel Wheels
1752	Topper
1753	Vicon Fertilizer Spinner
1754	Chain Harrows
1755	Menage Leveller
1756	Round Bale Grab
1757	Tractor Finishing Mower
1758	ALO Quicke 4ft Shear Grab (On Euro 8)
1759	Ferguson Saw Bench
1760	3 Point Linkage Hydraulic Fert Bag Lift
1761	Hardi Sprayer (800L)
1762	4 Leg Paraplough
1763	6ft Muck Scraper
1764	Evers front Mounted Tine Harrow
1765	Concrete Pan Mixer
1766	Corn Grinder Mill (On Stand)
1767	Chain Harrows
1768	Silage Grab

1769	Silage Grab Spare / Repair
1770	Silage Grab Spare / Repair
1771	Roller
1772	5ft Transport Box
1773	Muck Grab on Manitou Brackets
1774	5 Furrow Reversible Lemken Plough
1775	Howard Rotovator
1776	McConnel Brackets
1777	McConnel PTO Saw Bench
1778	Ferguson 9 Leg Scuffle
1779	Howard Rotovator
1780	Teagle Fertiliser Spreader
1781	8ft Twose Flat Roller
1782	Ferguson 2 Furrow Plough
1783	Ransome 2 Furrow Plough
1784	Fertiliser Spreader
1785	Bale Spike (Manitou Brackets)
1786	Ransome 2 Row Potato Lifter
1787	Statan 242 Potato Setter
1788	Q Fit Telehandler Bucket
1789	Q Fit Bale Spike
1790	Pallet Tines Cone & Pin Back Plate
1791	Chain Harrow (9' X 8')
1792	Roller (9' X 7'6 ")
1793	Chain Harrow (8' X 5')
1794	Tractor Bucket (6' X 2'6 ")
1795	Mini Ditching Bucket
1796	Stocks Fan Jet Slug Pelleter
1797	Transport Box
1798	ATV Field Roller (5')
1799	Bobcat Skid Steer Muck Fork
1800	Paddock Roller (5')
1801	Moulton Muck Scraper
1802	Hydraulic Log Splitter
1803	Cambridge Roller (5')
1804	Chain Harrows



1805	Howard Rotavator (For MF T20)
1806	MF Scruffler
1807	Snow Plough
1808	Mounted PTO Hole Borer
1809	Fertiliser Spreader
1810	Spiral Packer Roller
1811	Concrete Scoop
1812	Vicon Vari Spreader
1813	Dowdeswell 1050 Rotary With Flails
1814	Amazon Fertiliser Spreader
1815	Slurry Stirrer
1816	Log Splitter
1817	Log Splitter (3 Point Linkage)
1818	MF Conventional Plough
1819	Round Bale Squeezer
1820	Kidd 10Ft Land Roller
1821	Saw Dust Dispenser
1822	AJP Bale Spike
1823	Mole Plough
1824	McConnell Shakerator
1825	Kverneland 5 Furrow Hyd Vari Width Plough
1826	Twose 8M Tined Grass Harrow
1827	Strimech 7'6 Muck Grab
1828	Opico 6M Grass Harrow
1829	McConnel Rhino Topper
1830	Ransome Plough
1831	Dowdeswell Plough
1832	ATV Slug Pelleter
1833	Bale Wrap Carrier
1834	Muck Grab (6Ft with Chilton Brackets)
1835	Man Basket (8Ft)
1836	Yard Scraper
1837	Lely Power Harrow (3M)
1838	Flymel Bedding
1839	Stortie Labrador 160
1840	FMA 6.3M Cambridge Roller

1841	Howse Post Auger
1842	Dowdeswell Delta Furrow Plough
1843	Strider Sweeper
1844	Loading Shovel
1845	JCB Shear Grab
1846	Parmiter Post Knocker
1847	Concrete Mixer Tractor PTO Mounted
1848	Tractor Buckrake (Trip Type)
1849	Malgar Slurry Stirrer
1850	Shear Grab
1851	Claas Whole Crop Mill
1852	Maxi Scraper
1853	MF Corn Drill
1854	Quicke Loader Bucket
1855	Muck Fork (5' Quicke Brackets)
1856	Bale Spike
1857	Loader Frame
1858	Flat Roller
1859	Land Rake 5Ft
1860	Hackett Trailed Chain Harrows (10Ft)
1861	Browns Single Leg Subsoiler
1862	Strimech Front Bucket
1863	Digger Bucket (13 Ton)
1864	Muck Grab (4Ft)
1865	Pallet Tines (4Ft)
1866	Balewrap Carrier A Frame
1867	Amazone Combi Drill
1868	Sprayer (6000 Ltr)
1869	Push Off Buckrake (6 Ft)
1870	Hardi Sprayer
1871	Kverneland 3 Furrow Plough
1872	Tong Potato Grader
1873	Seed Drill (Lawrence Edwards)
1874	Kverneland 3 Furrow Plough
1875	Silage Grab
1876	Chain Harrow

1877	Post Hole Borer (Tractor Mounted)
1878	Tanco Bale Squeeze
1879	Merlo Bucket
1880	Merlo to Q Fit Interchange Headstock
1881	Muck Grab (Pin & Cone)
1882	Bale Spikes on Euro 3 Brackets
1883	Amazon Fertiliser Spreader
1884	Bomford Hedge Cutter
1885	Zagroda Pan Mixer
1886	Technoma Maxi 5 20m Sprayer
1887	Slug Pelleter
1888	Weaving Sub Disc 3.5mtr
1889	MF30 4mtr Seed Drill
1890	Front Press & Cultivator
1891	Foster Yard Scraper
1892	Drag Type Chain Harrows
1893	Small Transport Box
1894	12mtr Sprayer
1895	4 Furrow Plough
1896	Buck Rake
1897	Ford Ransome 7 Furrow Plough
1898	Vicon Fertiliser Spreader
1899	Corn Bucket (JCB Q Fit Brackets)
1900	Parmiter 200 Shear Grab
1901	Slurry Stirrer
1902	McConnell Saw Bench
1903	Vicon Fert Spreader
1904	Suton Cyclone Collector Sweeper
1905	Moulton Muck Spreader
1906	Bomford Falcon Hedge Cutter
1907	Ferguson Steerage Hoe
1908	Snow Plough
1909	Snow Plough
1910	Halls Bale Spike (on JCB Brackets)
1911	Tractor Loader Bucket (6Ft)
1912	Single Leg Subsoiler

1913	Corn Elevator
1914	Chain Harrow
1915	Muck Scraper (A Frame)
1916	A Frame
1917	Tractor Link Box
1918	MF 260- 3 Furrow Reversible Plough
1919	Muck Grab
1920	Parmiter Post Knocker
1921-1935	Details On Sale Day

## **CUSTOMER REGISTRATION**

You **MUST** register to bid at the 2024 Darley Moor sale.

### **New Customers**

You must register in person at the site office - **OFFICE 1 (PAY OFFICE)** on Thursday 18th or from 7.30am on the morning of the sale.

### **Existing Customers**

Please call the on site mobile phone on 07757 668228 to obtain your Bagshaws computer number on Wednesday 17th April & Thursday 18th April only.

**All purchasers must obtain EITHER a bidding number or computer number**

## Tractors, Telehandlers and Vehicles – 12.30pm

1936-1940	Details On Sale Day
1941	Ford 4000
1942	Iseki Compact Tractor
1943	Ferguson TEF20
1944	Massey Ferguson 35X Multipower
1945	David Brown 1190 Non Runner (Spares/Repair)
1946	David Brown 880 Selectamatic
1947	MF 130
1948	International Harvester 475 2WD
1949	Mini Garden Trailer
1950	Massey Ferguson 135
1951	International 444 c/w Cab
1952	International 674 1975 (Project)
1953	International 674 (Spares Only)
1954	International 674 (No Clutch)
1955	Fordson Major Diesel
1956	Ferguson T20
1957	Ferguson T20
1958	Ford 3910
1959	Manitou/International Loader Tractor
1960-1964	Details On Sale Day
1965	Massey Ferguson 6480 4WD
1966	Case International 785XL
1967	International 684 2WD
1968	Ford 6610 4WD
1969	Case 685
1970	Kubota RTV 900
1971	Case International
1972	New Holland TS120 (Registered 2019)
1973	Deutz Fahr Agrotron
1974	Ford 4610 (No Log Book)
1975-1980	Details On Sale Day

## Vehicles, Lorries, Handlers and Excavators

1981	13T Excavator
1982	8T Digger
1983	Bobcat 641 Skid Steer Loader
1984	FDI Sambron Euroscopic M2544 Handler
1985-1990	Details On Sale Day
1991	Land Rover Range Rover Vogue
1992	Iveco Lorry
1993	Ford Transit Connect (53 Plate)
1994	Land Rover Discovery
1995	Volvo V70
1996	Land Rover Discovery
1997	Ford Iveco
1998	Ford Iveco 65C 180
1999	Fiat Scudo Van (56 Plate)
2000	DAF LF / 45
2001	Vauxhall Corsa 1.2 (YR59 PLU)
2002	Land Rover Defender 110
2003	Toyota Hilux Invincible
2004	LDV 400 Convoy TD LWB (EU53 VKR)
2005	Mitsubishi L200
2006	Ford Transit Custom SWB 2015
2007	Transit Crew Cab Tipper 04 Plate
2008	Transit Crew Cab Tipper 11 Plate
2009	Land Rover Freelander 2 GS TD4
2010	Mitsubishi L200
2011	Audi A5 (VK10 LWE)
2012	Ford Fiesta
2013	Discovery TD5 Spares / Repairs
2014	Land Rover Discovery 3 HSE (HG05 OZR)
2015	Citroen Berlingo (YX02 CEF)
2016	Ford Escort Van
2017	Land Rover LWB 3.9
2018	Mitsubishi L200 Raging Bull
2019	Mitsubishi L200

2020	Mercedes ML 280 CDI
2021	Toyota Hilux Twin Cab (MK60 LSJ)
2022	Ford Transit Minibus, 08 Plate
2023	JCB JS130 Excavator
2024	Land Rover Discovery TDV6 (CE06 HYY)
2025	Vauxhall Combo Van
2026	Land Rover Discovery (SD57 ZJY)
2027-2035	Details On Sale Day

## **Quad Bikes, RTV's, Motorcycles, Dumpers and Plant**

2036	Suzuki King Quad
2037	Yamaha Big Bear Quad Bike
2038	Off Road Buggy
2039	Kazuma Childrens Quad Bike
2040	Apache Childrens Quad Bike
2041	Kawasaki Mule
2042	Kids 125cc KLF Motor Bike
2043	Small Quad Bike
2044	Small Quad Bike
2045	Honda TRX 500 Quad
2046	Kawasaki Mule 3010
2047	Polaris Sportsman 500
2048	Yamaha Breeze 125 Motor Bike
2049	Kawasaki KVF 650
2050	Kawasaki Mule, Petrol
2051	Yamaha Quad Bike Spares/Repair
2052	Kilworth Wood Chipper
2053	Benford Single Drum Pedestrian Roller
2054	Off Road Buggy
2055	Apache Quad Bike
2056	Yamaha 450 Quad (Non Runner)
2057	Polaris Quad Bike
2058	50CC Childs Quad Bike
2059	50CC Childs Dirt Bike
2060	Thwaites Power Up Mega Dumper (5 Ton)
2061	Dumper

2062	Cat 18 Gas Fork Lift Truck
2063	SMC TL90 Generator Lighting Tower
2064	Thwaites 9T Dumper
2065	Takeuchi TB216 Mini Digger
2066	Allen Shredder/Leaf Chipper
2067	Powerwagon Pro
2068	Toro Reelmaster 53000-D
2069	Alan Triple Ride On Cylinder Mower
2070	Jacobson Triple Ride On Cylinder Mower
2071	Cat 70 Hydraulic Breaker
2072	Cat 244 Road Roller
2073	Thwaites 1T High Lift Dumper
2074	Belle 2.5 Diesel Mixer
2075	Diesel Generator On Trailer
2076	Broomwade Road Compressor
2077	Robins Dagger Single Tine Petrol Aerator
2078	CMS Super Blotter
2079	Irrigation Pump
2080	Ezgo Golf Buggy
2081	Goodwin 6" Water Pump
2082	Goodwin 4" Water Pump
2083	Westwood Self Propelled Ride On Mower
2084	2008 Terex PT 7000 7 Tonne 4wd Dumper
2085	Benford 6 Tonne 4wd Dumper
2086	Hyster Diesel Forklift With Triplex Low
2087	Beaver T224 Diesel 3 Gang Mower
2088	Ransomes Diesel 3 Gang Mower With Kubota Engine
2089	Beaver T24 Mower For Spares / Repairs
2090	Compair Broomwade Towable Road Compressor
2091	SMC Diesel Towable Lighting Tower
2092	Thwaites  Tusker Digger, Twin Cylinder
2093	Jensen Wood Chipper
2094	Scag 32 Walk Behind Mower
2095	Alko Farmer Rough Terrain Mower
2096	Forest Master Log Splitter
2097	Giani Farrari 42 Honda Mower



2098	Case Skid Steer
2099	Vb-p Fast Tow Lighting Tower
2100	Kubota 4 Cylinder Diesel Generator
2101	4 Tonne Hitachi Digger With Spare Tracks
2102	Wood Chipper
2103	Countax C300H Ride On Lawn Mower
2104	Mobility Scooter
2105	Allandale Mower
2106	Allandale Snow Plough
2107	JCB Digger Loader (2WD)
2108	Mobile Site Saw Bench
2109	Tracmaster Pedestrian Rotavator
2110-2120	Details On Sale Day

## **MACHINERY SALES FIXTURES**

---

### **Friday 3rd May**

Church Cottage Farm, Hulland Ward  
 John Deere 6930 4WD, Manitou Telehandler  
 Bobcat Skidsteer Loader c/w Attachments  
 Trailers, Grassland Machinery, Cattle Equipment and Sundries  
 Round Baled Hay and Silage

---

### **Saturday 18th May**

Park Farm, Spinkhill  
 John Deere and Zetor Tractors, Trailers, Grassland Equipment  
 Livestock Items, Collectables and Stone Troughs

---

### **Saturday 1st June**

Reserved Machinery Dispersal-Barton in the Beans

---

### **Friday 7th June**

Reserved Machinery Dispersal-Matlock

---

**For detailed catalogues and more information call the Uttoxeter Office  
 on 01889 562811 or visit [www.bagshaws.com](http://www.bagshaws.com)**

**Considering a sale? For an informal and confidential chat call  
 Mark Elliott on 07973 673092**

## Grassland Machinery and Fertiliser Spreaders

(To Commence after the Tractors and Telehandlers)

2121-2130	Details On Sale Day
2131	Taarup Trailed Mower Conditioner
2132	John Deere F1145 Out Front Mower
2133	PZ Drum Mower
2134	Flat 8 Grab (Euro Brackets)
2135	Krone 7.70/6x7 Six Rotor Folding Tedder
2136	Claas Liner 880 Profi Twin Rota Rake
2137	Cooks Flat 8 Windrower Bale Sledge
2138	PZ Haybob
2139	Browns Flat 8 Bale Sledge
2140	Fahr Hay Tedder
2141	McHale Bale Wrapper
2142	PZ 200 Series Haybob
2143	John Deere 550 Round Baler
2144	Claas WM165 Mower
2145	Vicon Fanex 8 Rotor Tedder
2146	JF Stoll SB2405 2.4m Disc Mower
2147	Browns Flat 8 Grab (Quicke Brackets)
2148	Grass Topper
2149	Port Agri ATV Topper
2150	Flat 8 Grab
2151	Claas Volto 4 Rotor Tedder
2152	Haybob 300 Tedder
2153	Frans Gard 390 Twin Rotor Hay Tedder
2154	Lely Hay Tedder
2155	Lely 320 Splendimo
2156	Claas Volto 670 Tedder
2157	Krone 320 Mounted Mower Conditioner
2158	Hesston Square Bale Grab
2159	Class Liner 2900 Rake
2160	Kuhn 280 Front Mounted Mower Conditioner
2161	Browns Square Bale Squeezer
2162	Krone 1050 Tedder

2163	Vicon 632 Mounted Mower Conditioner
2164	Hay Bob
2165	Taarup 306 Trailed Mower Conditioner
2166	Browns Flat 8 Bale Grab
2167	Krone Baler Pickup
2168	Bamford Wuffler
2169	KRM Fertiliser Spreader
2170	Vicon Varispreader
2171	Krone 6 Rotor Tedder
2172	Stoll 2555 4 Rotor Tedder
2173	New Holland Big Square Baler D1000
2174	Bale Wrapper
2175	Browns Bale Sledge & Grab
2176	New Holland Baler
2177	Elevator
2178	New Holland Baler
2179	Agrostroj Mu 2800 Topper
2180	Fahr Twin Disc Mower
2181	Ferri Pasture Topper
2182	Teagle Topper
2183	Charterhouse Level Strike Sward Slitter
2184	Weaving Grass Topper
2185	Major Flat 8 Bale Sledge
2186	Farm Hand Flat 8 Grab
2187	Vicon Fertilizer Spreader
2188	Claas Round Baler
2189	Votex Vixen 4 Grass Topper
2190	Kuhn FC 243 Mower/Conditioner
2191	Hardi L800 13m Sprayer
2192	Vicon 1002 Vari Spreader
2193	Vicon 600S Vari Spreader
2194	Bamford/PZ Twin Drum Mower
2195-2200	Details On Sale Day

## FYM Spreaders, Tankers and Feeders

2201-2205	Details On Sale Day
2206	Foster 750D Feeder Wagon
2207	Teagle 404 Straw Chopper With Extension
2208	Fraser Muck Spreader
2209	West Muck Spreader
2210	Raw Dribble Bar
2211	Vernhuis Slurry Injector (4.5m)
2212	Rotary Muck Spreader
2213	Primex 1600 Gal Slurry Tank Pump
2214	Fraser 8.5 Cube Rotor Spreader
2215	Kidd Double Chop Forager
2216	Rolland V12 Rear Discharge Spreader
2217	Richard Western Rear Discharge Spreader
2218	Marshall 1500 Vaci Tanker
2219	Zero Grazer Kedr Trailer
2220	JF Rear Discharge Spreader
2221	Marshall Tanker (1,500 Gal)
2222	Fan Jet 24 Spreader
2223	Nutritech Slurry Injector
2224	PTO Slurry Pump
2225	Bunning Low Lander 120 Spreader
2226-2230	Details On Sale Day

## Farm and Tipping Trailers, Livestock and Vehicle Trailers

2231	Ifor Williams Stock Trailer
2232	Ifor Williams Flat Bed Trailer
2233	Stock Trailer
2234	Plant Trailer
2235	3 Tonne Tipping Trailer
2236	West 8 Tonne Grain / Silage Trailer
2237	Flat Trailer
2238	Bailey 12Ft Grain Trailer
2239	Graham Edwards Cattle Trailer (12Ft)
2240	Sheep Snacker Trailer
2241	Tri Axle Flat Bed Trailer (16Ft)
2242	Car Trailer
2243	Daxara 107 Trailer
2244	Ifor Williams Single Axle Trailer (6x4ft)
2245	Single Axle Trailer (7x4)
2246	Grain Trailer (10 Ton)
2247	Graham Edwards 3.5T Plant Trailer
2248	8 Tonne Trailer With Silage Sides
2249	(2018) Ifor Williams GP126 Tri Axle Trailer
2250	Redrock 24 Tonne Tri Axle Low Loader
2251	Bateson 20ft Stock Container On Tandem Axle Chassis
2252	16ft Graham Edwards Trailer
2253	8 x 5ft Indespension Trailer
2254	Single Axle Bale Trailer
2255	Set Of AJP Silage Sides
2256	3 Tonne Single Axle Trailer With Sides
2257	3 Tonne Single Axle Trailer
2258	3 Tonne Single Axle Tipping Trailer
2259	Trailer Chassis
2260	20ft Bale Trailer
2261	Tow A Van Box Trailer
2262	1000 Litre Towable Fuel Bowser
2263	Braked Car Trailer
2264	Tipping Trailer

2265	Flat Trailer
2266	Trailer Chassis
2267	Drop Side Tipping Trailer
2268	Blue line Box Trailer
2269	Bateson 12 x 6 Cattle Trailer c/w Decks
2270	IBC Water Bowser On Wheels
2271	Car Trailer
2272	Swift Classic Caravan
2273	Small Car Trailer
2274	Silage Feed Trailer (14Ft)
2275	Metal Meshed Gate (15Ft)
2276	Fuel Bowser
2277	Dropside Tipping Trailer
2278	Car Trailer With Sides
2279	Grain Trailer (8T Twin Axle)
2280	Double Pony Tipping Trailer
2281	Blue Henton Trailer
2282	Small Car Trailer
2283	Hall Tipping Trailer
2284	4 Wheel Bale Trailer
2285	Lea-Way Super Four Tipping Trailer
2286	Avonride Twin Axle Plant Trailer
2287	Mini Digger Plant Trailer
2288	Mini Digger Plant Trailer
2289	Small Tipping Skip Trailer
2290	Garden Tractor Trailer
2291	Quad Trailer
2292	Herbst 10 tonne Drop Side Tipping Trailer
2293	Mobile Diesel Tank With Gauge & Pump
2294	Lawrence Edwards Bale Grab
2295	Car Trailer
2296	Car Trailer
2297	Dragon 10 tonne Trailer c/w Silage Sides
2298	Fuel Bowser Towable (2000 litres)
2299	Plant Trailer
2300	Tandem Axle Trailer (18Ft)

2301	Tandem Axle Bale Trailer (28Ft)
2302	Tandem Axle Curtain Sided Veg Trailer
2303	Mobile Diesel Bowser
2304	Tandem Axle Trailer Chassis (21Ft)
2305	Water Bowser
2306	Tipping Trailer
2307	Twin Axle Low Loader Trailer
2308	Tipping Trailer (3T)
2309	7T Hydraulic Drop Flat Low Loader Trailer (16Ft)
2310	Towable Fuel Bowser (1000 Ltr)
2311	Ifor Williams Trailer
2312	Bale Trailer (27 Ft)
2313	Grain Trailer (6T)
2314	Show Trailer (Twin Axle)
2315	Show Trailer Draw Bar Hitch
2316	Transporter Trailer (Single Axle)
2317	Marshall Tipping Trailer (10 Ton)
2318	Bale Trailer (18Ft)
2319	Bale Trailer (26Ft)
2320	Car Tipping Trailer
2321	Tipping Trailer Chassis
2322	10ft Ifor Williams Cattle Trailer
2323	Wessex Treble Horse Trailer
2324	Quad Tipper Trailer
2325-2335	Details On Sale Day

## Tanks, Containers, Caravans, Hook Lift Trailers & Artic Trailers

2336	12ft Mollasses Tank & Stand
2337	Scammel Trailer & Dolly (26ft)
2338	Scammel Trailer & Dolly (27ft)
2339	33ft Bale Trailer With Dolly
2340	Flat Trailer (25ft & Dolly)
2341	Wooden Sectional Shed
2342	16ft Aluminium Cattle Container
2343	Porta Cabin (12Ft)
2344	Porta Cabin Office
2345	Portable Office (20ft)
2346	Shipping Container (20Ft)
2347	Shipping Container (20Ft)
2348	Shipping Container (20Ft)
2349	45ft Flat Bed Trailer
2350	Buccaneer Galeria Caravan (2017)
2351	Steel Shed
2352	Scammell Trailer
2353	Artic Bulk Trailer
2354	Grain Hopper (1.2T)
2355	Artic Dolly
2356	Artic Dolly
2357	Alloy Cattle Container
2358	Artic Alloy Bulker Trailer (45Ft)
2359	Artic Trailer Dolly
2360	Grain Bin (1T With Stand)
2361	Tandem Axle Trailer (40Ft)
2362	Tandem Axle Trailer (33Ft)
2363	Wagon & Drag Trailer
2364	Vacuum Tanker
2365	Curtain Side Container (20' X 8')
2366	Galvanised Sliding Door
2367	Artic Trailer (45Ft)
2368	Artic Dolly
2369	Hook Lift Trailer inc 3 Skips (Flat, Drop Side)



## CONDITIONS OF SALE

### 1. COMMISSION & CHARGES

Commission to the Vendor for selling is as per Signed Client Instructions Letter.

2. Photographs and Illustrations. A fee will be charged at the current rate where applicable. The Vendor gives the Auctioneer full and absolute right to use photographs and illustrations of lots at any time at its absolute discretion (whether or not in connection with the auction).

3. Definitions. In these Conditions Bagshaws LLP act only as auctioneers and agents and the representative of Bagshaws LLP conducting the auction is called "the Auctioneer".

4. General. Whilst Bagshaws LLP make every effort to ensure the accuracy of their catalogues and the description of any lot:-

(a) Each lot is set out in the catalogue or as divided or combined with any other lots or lots is sold by the vendor with all faults, imperfections and errors of descriptions.

(b) Bagshaws LLP do not accept responsibility for the authenticity, attribution, genuineness, origin, authorship, date, age, period, condition or quality of any lot unless they have been instructed in writing by the seller to so certify, and in such case the Auctioneer does so as agents of the seller and are not themselves responsible for such claims.

(c) All statements whether printed in the catalogue or made orally as to any of the matters set out in (b) above are statements of opinion only and are not to be taken as being or implying any warranties of fact by Bagshaws LLP unless they have been instructed in writing by the sellers to so certify, and in such case the Auctioneer does so as agents of the seller and are not themselves responsible for such claims.

5. The Auction. (a) The Auctioneer has absolute discretion to divide any lot, to combine any two or more lots or withdraw any lot or lots from sale, to refuse bids, regulate bidding or cancel the sale without in any case giving any reason or without previous notice. He may bid on behalf of the vendor for all goods which are being offered subject to reserve or at the Auctioneer's discretion.

(b) The highest bidder shall be the buyer. The Auctioneer may at his sole discretion determine the advance of bidding or refuse a bid. If during the auction the Auctioneer considers that a dispute has arisen, he has absolute discretion to settle it or re-offer the lot.

(c) Each lot is put up for sale subject to any reserve price placed by the vendor. Where there is no reserve price (but not otherwise) the seller has the right to bid either personally or by any one person (who may be the Auctioneer).

(d) All conditions, notices, descriptions, statements and other matters in the catalogue and elsewhere concerning any lot are subject to any statements modifying or affecting the same made by the Auctioneer from the rostrum prior to any bid being accepted for the lot.

6. Auctioneer's Right to Annul Sales. In the event of any dispute or refusal to pay, or non-payment on the part of the Purchaser, the Auctioneers may entirely at their discretion annul and cancel the sale of such lot(s).

7. Default. Bagshaws LLP disclaim responsibility for default by either the buyer or the vendor because they act as Auctioneers only and therefore do not pay out to the vendor until payment is received from the buyer.

8. Third Party Liability. Every person on Bagshaws LLP premises at any time shall be deemed to be there at his own risk. He shall have no claim against Bagshaws LLP in respect of any accidents which may occur or injury, damage or loss howsoever caused, save in so far as the injury, damage or loss shall be caused by the negligence of Bagshaws LLP employees.

9. Instructions. As Bagshaws LLP are auctioneers all goods delivered to the sale site / premises will be deemed to be delivered for sale by auction unless otherwise stated in writing and will be catalogued and sold at Bagshaws LLP discretion and accepted by Bagshaws LLP subject to all the sale conditions. By delivering the goods to Bagshaws LLP for inclusion in their auction sales each vendor acknowledges that he or she has accepted and agreed to be bound by all these Conditions.

10. Health & Safety. Any person bringing onto any premises used by Bagshaws LLP any hazardous substances must provide the relevant information for use by the Auctioneers, members of the public and prospective purchasers. Vendors of all goods are reminded of their duty to comply with relevant Health & Safety Acts. Vendors must ensure any plant, machinery or other goods are safe for normal usage and comply with all relevant regulatory requirements, or make Bagshaws LLP aware of any known defects that could affect the safe operation of the equipment. Purchasers are reminded that any second hand goods purchased through an auction sale should be thoroughly checked by a competent person before use.

11. Electrical and Mechanical Goods. The seller and consignor of electrical or mechanical goods undertakes to Bagshaws LLP that on the date received by Bagshaws LLP that the same are safe if reasonably used for the purpose which they were designed and free from any defect not obvious on external inspection which could prove dangerous to human health and will indemnify Bagshaws LLP against any loss or damage suffered by any breach of the above warranty.

12. Soft Furnishings. The sale of soft furnishings is strictly regulated by statute law in the interests of fire safety. Goods found to infringe safety regulations will not be offered and must be removed at your expense. We reserve the right to dispose of unsafe goods as refuse at your expense.

13. Collection. Bagshaws LLP do not themselves undertake the collection of goods but will, if required in writing, instruct a contractor on the vendor's behalf in their capacity as agents. Bagshaws LLP disclaim all responsibility for loss or damage to goods or for unauthorised removal of goods and for damage to premises caused by the contractor who should be insured for such risks.

14. Storage. Bagshaws LLP reserve the right to store or arrange for the storage of goods delivered to them for sale either on their own premises or elsewhere at their sole discretion. They exempt themselves from any liability for loss or damage to goods delivered to their auction premises / site without sufficient sale instructions. Bagshaws LLP reserve the right to make a storage charge for such goods.

15. Right to sell. Vendors will be charged for goods left on the premises if the vendor has been requested to remove them and if the goods are not removed within five days of such request Bagshaws LLP reserve the right to sell the goods without reserve to defray costs and storage charges.

16. Loss or Damage. Bagshaws LLP disclaim all responsibility for loss or damage to goods or for unauthorised removal of goods unless caused by the negligence of their employees.

17. IMPORTANT NOTICE. At all times prior to the fall of the hammer goods remain the responsibility of the vendor and thereafter the responsibility of the purchaser at no time do auctioneers accept responsibility other than when due care is expected of an agent.

18. Insurance. (a) Vendors are advised that to ensure adequate insurance cover for their goods, they are recommended to extend their own insurance policy to cover loss or damage whilst in the custody of Bagshaws LLP.

(b) Bagshaws LLP shall not be responsible for accidental breakage, loss or damage howsoever caused unless directly caused by negligence of their employees.

(c) Bagshaws LLP shall not be responsible for damage to or the loss, theft or destruction of any goods not so insured by the owners.

19. Reserves. (a) All goods are put up for sale WITHOUT RESERVE unless written instructions are received by Bagshaws LLP

(b) In the event of any reserve price not being reached at auction, Bagshaws LLP are empowered to sell after the auction, by private treaty, at not less than the reserve price, as long as the goods remain on Bagshaws LLP premises / the sale site.

20. Bidding increments. Bidding increments will be at the Auctioneer's sole discretion.

21. Indemnity. The vendor shall duly indemnify Bagshaws LLP against any claims in connection with any goods sold by Bagshaws LLP on the vendor's behalf.

22. Value Added Tax. A vendor who sends for sale by auction any item(s) which is an asset of his own business must disclose to the Auctioneer whether or not he is a registered person for Value Added Tax purposes, and, if so his registered number. This information must be supplied to the Auctioneer on or prior to delivery of the goods. All Auctioneers charges are subject to Value Added Tax, unless stated otherwise.

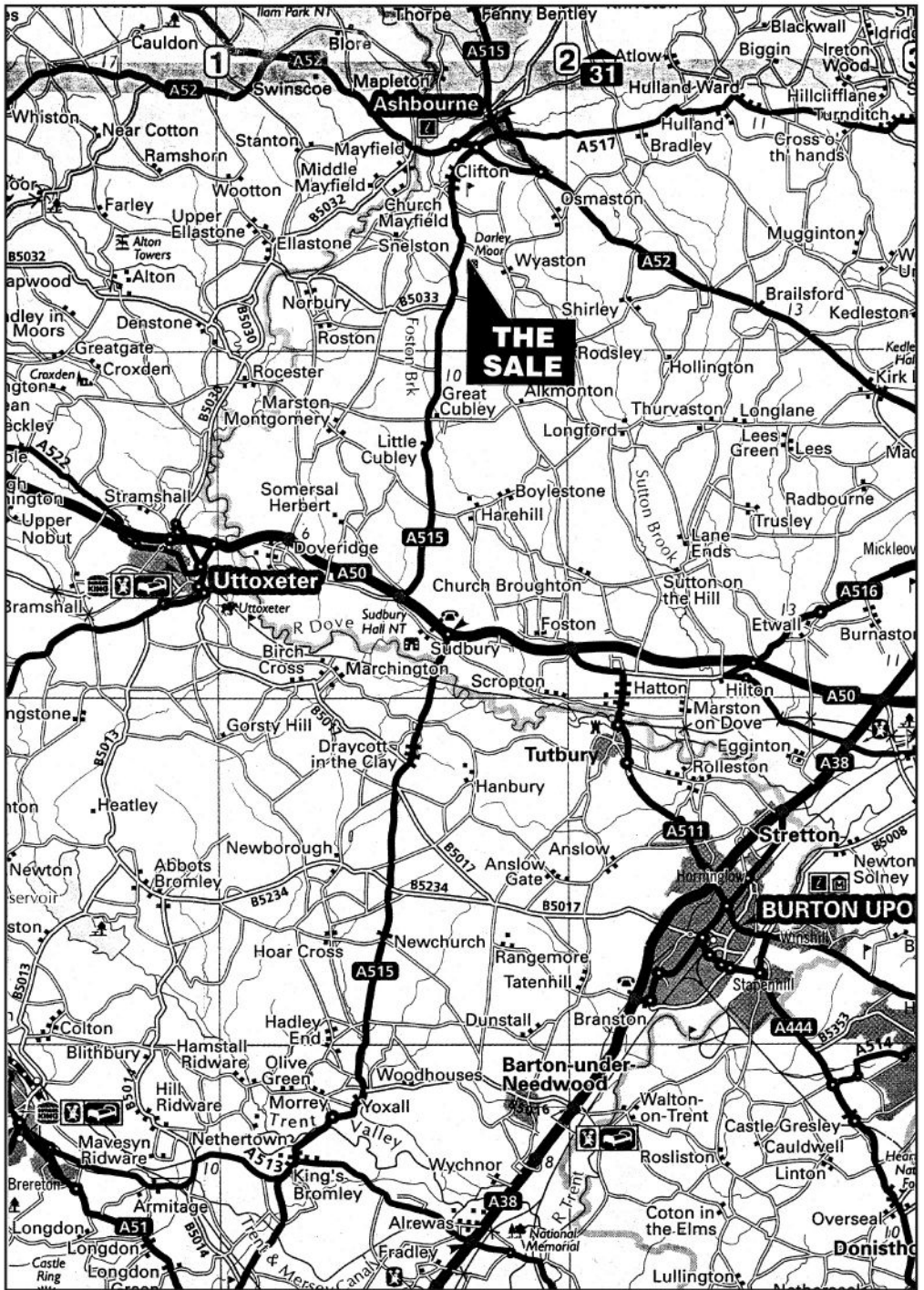
23. Final payment is made directly to the vendor by post within 14 days following the date of sale. If your items do not sell, you must collect them as soon as possible after the sale.

24. RICS CLIENT MONEY PROTECTION SCHEME Any monies held on your behalf, as collected from purchasers, will be held by Bagshaws LLP, acting as Agent, in a Clients Bank Account (Bagshaws LLP No 6 Auction Sale Client Account). For your protection, Bagshaws LLP adhere to the Client Monies rules of the RICS and as such those monies are protected by the RICS Client Money Protection Scheme. In order to settle any sale in a timely manner, Bagshaws LLP may choose to make payments to vendors in advance of monies being received from purchasers. Any such payments will be made separately by Bagshaws LLP, acting as Principal, they are not therefore classed as client monies and no cover is available on them from the RICS Client Money Protection Scheme.

25. Complaints. A copy of Bagshaws LLP complaints procedure is available upon request.

## BUYERS CONDITIONS OF SALE

1. The buyer shall pay the hammer price together with V.A.T as necessary to the Auctioneers on the day of sale and if demanded by the Auctioneers or their clerk at any time during the progress of the sale shall be paid forthwith. The majority of items sold will be subject to V.A.T. at the usual rate, which will be charged in addition to the auction price. Lots from unregistered Vendors will be indicated at the time of sale.
2. Not only will any bidder or purchaser at any sales be deemed to be purchasing, or to have purchased, in full knowledge of, and agreement with, these and any other printed or announced conditions of sale, he will also be deemed to be in full knowledge of, and agreement with such other conditions of sale as are on display during normal office hours in the offices of the Auctioneers.
3. Property and Risk. Legal title will not pass to the buyer until the lot(s) has been paid for in full and the Auctioneers shall be entitled to a lien on any lot sold until the purchase price is paid in full but each lot is at the sole risk of the buyer from the fall of the hammer. If the buyer fails to pay in full, the lot may at the Auctioneer's discretion be put up again and re-sold.
4. Inspection. Each buyer making a bid for a lot acknowledges that he has satisfied himself fully before bidding by inspection or otherwise as to all Sale Conditions the physical condition of and description of the lot including but not restricted to whether the lot is damaged or has been repaired or restored.
5. Bagshaws LLP do not accept responsibility for the authenticity, attribution, genuineness, origin, authorship, date, age, period, condition or quality of any lot unless they have been instructed in writing by the seller to so certify, and in such case the Auctioneer does so as agents of the seller and are not themselves responsible for such claims.
6. All statements whether printed in the catalogue or made orally as to any of the matters set out above are statements of opinion only and are not to be taken as being or implying any warranties of fact by Bagshaws LLP unless they have been instructed in writing by the sellers to so certify, and in such case the Auctioneer does so as agents of the seller and are not themselves responsible for such claims.
7. Bids. (a) In Person-bidding: You will need to register for each auction by completing a Buyer Registration Form at the office. Once you have provided us with your name, address and contact telephone number you will be allocated a bidding number which is used to indicate your bids to the auctioneer during the auction.  
(b) Telephone bids: Buyers wishing to bid by telephone during a sale should make their request at least one working day before the sale by telephoning 07757 668228. You will be informed whether this service is available, which is not guaranteed.  
(c) Commission Bids: We will be pleased to execute bids on behalf of intending buyers, and no charge is made for this service. Lots will be purchased as cheaply as permitted by other bids and reserves. Bids must be submitted to the site office prior to 5.30pm on the day before the sale, and should be entered on the form provided. Bids left by telephone will be accepted only on the condition that they are the bidder's risk, and must in any case be confirmed in writing.  
(d) Buyer registration. For purchasers unknown to Bagshaws LLP the following identification is required for in person bidding/ commission bids/ telephone bidding:-  
A copy of either passport, driving licence, building society or bank book, or bank reference along with a copy of a recent bank statement or utility bill.
8. Bidding increments. Bidding increments will be at the Auctioneer's sole discretion.
9. Payment. (a) Bagshaws LLP are able to accept cash payments (provided that the total does not exceed the equivalent in sterling of £10,000.)  
(b) Bagshaws LLP are able to accept payments by cheque; goods will only be released once the cheque has been cleared. Goods under £500 may be released on the approval of a partner, senior valuer / Auctioneer or partnership accountant. Cheques drawn by third parties, whether in the Auctioneer's favour or requiring endorsement, cannot be accepted.  
(c) Bagshaws LLP are able to accept payment by most debit cards and credit cards in settlement of clients' accounts. Bagshaws LLP regrets that it is not able to accept payment by certain credit or charge cards. Photo identification and a recent bank statement or current utility bill may be required for card transactions, a copy of which may be taken.
10. Removal of Goods. (a) No purchase shall be claimed or removed until it has been paid for.  
(b) Goods will not be released until full, cleared payment has been received. Goods will be handed over upon sight of a paid invoice and if a paid invoice is not produced then written authority of the purchaser and confirmation of all funds being cleared for payment of the account will be required.  
(c) When goods are collected by a non-recognised party or courier, photo identification will be required, a copy of which will be taken, along with a note of the registration number of vehicle used.  
(d) All purchases shall be paid for and removed at the buyer's risk and expense by the end of the fifth day after the sale. If they are not paid for and removed within 5 days of the sale the Auctioneer may re-sell them by auction or privately without notice to the buyer. Any liability which there may be on the part of the Auctioneer in respect of any loss shall be restricted to a maximum of the price paid by the buyer of the lot sold.  
(e) In the event of any failure of the buyers to comply with any of the above conditions the damages recoverable by the seller or the Auctioneers from the defaulter shall include any loss arising on any re-sale of the lot, together with the charges in respect of both sales.
11. Health & Safety. Purchasers are reminded that any goods purchased through an auction sale should be thoroughly checked by a competent person before use and ensure that the items comply with all relevant Health & Safety Regulations.
12. IMPORTANT NOTICE: At all times prior to the fall of the hammer goods remain the responsibility of the vendor and thereafter the responsibility of the purchaser at no time other than when due care is expected of an agent do auctioneers accept responsibility. The insurance of goods is always the duty of the owner.
13. Photographs and Illustrations. The Buyer gives the Auctioneer full and absolute right to use photographs and illustrations of lots bought at auction at any time at its absolute discretion (whether or not in connection with the auction).



# **BIDDING / CUSTOMER NUMBER**