



Market Report

Bakewell Market

Monday 30th September

It seems that Summer is long gone with a frost last Saturday and torrential rain overnight and all through the Monday market day with more to come.

Despite all of the above, stock numbers were good with 887 cattle and 2,319 sheep on offer consigned by 268 vendors.

Bluetongue continues to be very worrying. A case has been confirmed in Wales and the restriction zone has been extended to include Hampshire. Neither of these developments have a direct effect on Bakewell Market, but serve to show how quickly things can change. Please check the latest situation later in the week before the sales on Thursday, Friday & Saturday or of course next Monday.

Any questions speak to Alastair Sneddon on 07973 982441.

The Store & Breeding cattle were out in force with a total of 521 head on offer. Trade was solid, but no better than we have seen it, suggesting that as ever 'back end' always comes – not helped by the weather.

Steers reached £1,800 to average £1,033 with heifers to £1,360 and feeding bulls to £1,440. Cows & calves topped at £2,300 with mature stock bulls to £1,580.

The 151 finished cattle looked well sold with the best to 380p/kg or £2,719. The overall average for the 62 heifers was 281.1p a shade less than last week.

OTM numbers were again strong with Bakewell maintaining its reputation as the place to sell them. Top figures 249p and £2,300 with the average a very respectable 183.8 pence.

The 69 calves looked to be in great demand with bulls to £585 and heifers £625.

A bumper crop of sheep with 1,582 lambs forward, the most we have had for some time.

The top figures 320p/kg and £159.81 with the SQQ average 275.9p and the overall 276.7p.

The average per head price for a lamb in the 39-45kg bracket was £117.79.

Large numbers of cull ewes in the market with some 735 reaching £189 to average £77.52.

Bluetongue in cattle

Know the signs

Bluetongue serotype 3 (BTV-3) is circulating on the eastern side of England. The Animal and Plant Health Agency (APHA) and Defra have declared bluetongue zones spanning several counties to help control further spread of the disease. You can find out more and check whether you are in a bluetongue zone by visiting gov.uk/bluetongue.

You can play a part in helping to stop bluetongue spreading by checking your animals for clinical signs, only moving animals if essential.

Clinical signs to look out for in cattle

- lethargy
- crusting and erosions around the nostrils and muzzle
- conjunctivitis and excessive tear staining
- redness of the mouth, eyes, nose
- reddening of the skin above the hoof and between the cleats
- nasal discharge
- reddening and erosions on the teats
- fever
- milk drop
- not eating
- abortion, foetal deformities and stillbirths

Adult cattle may be infectious for several weeks while showing little or no sign of disease. They are often the preferred host for biting midges (the vector of bluetongue virus).

Clinical signs in calves

Calves can become infected with bluetongue virus before birth if the mother is infected while pregnant. Signs of infection include:

- calves born small, weak, deformed or blind
- death of calves within a few days of birth
- stillbirths



Reddening and erosions on the teats

© A Allen



Red interdigital cleft



Ulceration in nostrils



Crusting around nostril

Find out more information and how to report bluetongue by visiting www.gov.uk/bluetongue

Bluetongue in sheep

Know the signs

Bluetongue serotype 3 (BTV-3) is circulating on the eastern side of England. The Animal and Plant Health Agency (APHA) and Defra have declared bluetongue zones spanning several counties to help control further spread of the disease. You can find out more and check whether you are in a bluetongue zone by visiting gov.uk/bluetongue.

You can play a part in helping to stop bluetongue spreading by checking your animals for clinical signs, only moving animals if essential.

Clinical signs to look out for in sheep

- ulcers or sores in the mouth and nose
- discharge from the eyes or nose and drooling from the mouth
- swelling of the lips, tongue, head and neck
- heat and tenderness at the coronary band (where the skin of the leg meets the horn of the foot)

Other clinical signs include:

- inappetence and weight loss
- red skin as a result of blood collecting beneath the surface
- fever
- lameness and reluctance to move
- breathing problems
- abortion, foetal deformities and stillbirths
- death

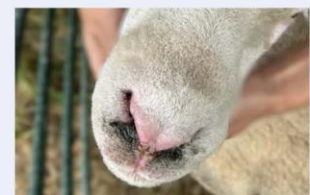
In lambs

Lambs can become infected with bluetongue virus before birth if the dam is infected while pregnant. Signs of infection include:

- lambs born small, weak, deformed or blind
- death of lambs within a few days of birth
- stillbirths



Ulcers and lesions in the mouth



Nasal redness



Nasal discharge

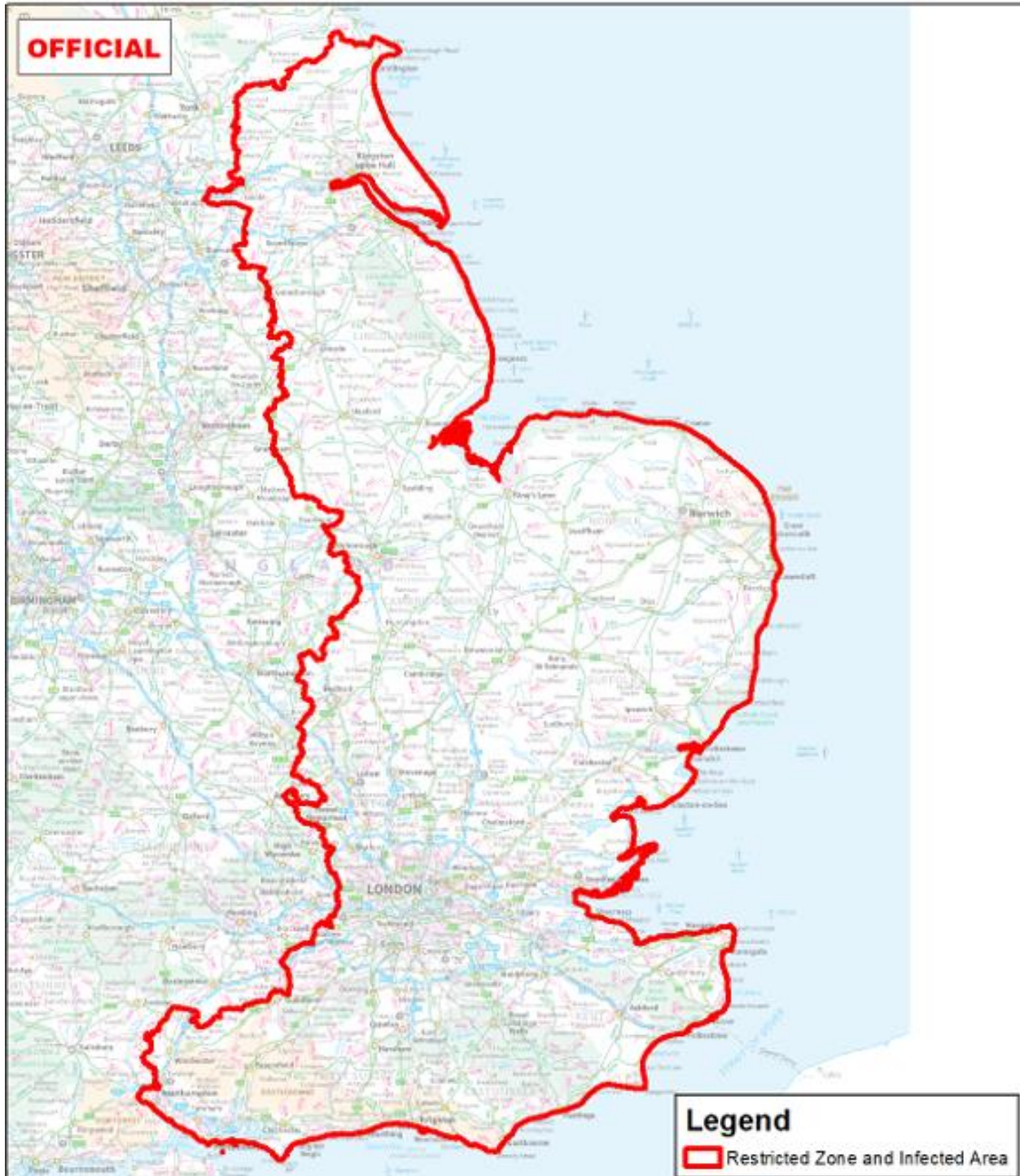


Recumbant animal

Find out more information and how to report bluetongue by visiting www.gov.uk/bluetongue



Bluetongue Serotype 3 Restricted Zone and Infected Area 30 September 2024



FORTHCOMING FIXTURES

Thursday 3rd October: Thursday Lunchtime Sheep Sale

Friday 4th October: Theaves & Ewes

Saturday 5th October: Ram Fair

VAN NUMBERS EXPIRE ON THEIR FIRST BIRTHDAY

It is now some time since the dreaded VAN numbers were thrust upon us. They only last for 12 months and the process needs to be renewed.

You can tell from the number itself how long they have to run because the expiry date is part of the number itself.

Please make sure you renew in time to avoid problems.

Any queries speak to Lynda Wood or Anna Wildgoose



WE INVITE YOU TO JOIN US AT OUR

NFU MUTUAL HEALTH & SAFETY DAY

WEDNESDAY 16TH OCTOBER | 10.30AM - 3PM

LIGHT LUNCH AND REFRESHMENTS

MATLOCK MEADOWS, SNITTERTON ROAD, MATLOCK, DE4 2JG

GUEST SPEAKER PHIL SMITH, NFU MUTUAL RISK MANAGEMENT CONSULTANT



Is your workplace safe?

Would HSE think it is safe enough?

Basis & NRoSO points applied for.

Do you understand your responsibilities to yourself, employees and visitors?

Hear about HSE attitude and expectations with practical sessions of what they look for on 'onsite' visits.

RSVP BY 9TH OCTOBER 2024

CALL 01629 812481 OR EMAIL

DERBYSHIRE_PEAKS@NFUMUTUAL.CO.UK

SUPPORTED BY



BAKEWELL MARKET 2024 SHEEP SALES

- **THURSDAY 15th AUGUST - STORE LAMB SALE**
- **FRIDAY 30th AUGUST - STORE LAMB SALE**
- **FRIDAY 6th SEPTEMBER - THEAVES & EWES (Show & Sale)**
- **FRIDAY 13th SEPTEMBER - STORE LAMB SALE**
- **THURSDAY 19th SEPTEMBER - MULE EWE LAMB (Show & Sale)**
- **FRIDAY 20th SEPTEMBER - EWE LAMB - Any Other Breed (Show & Sale)**
- **FRIDAY 27th SEPTEMBER - STORE LAMB SALE**
- **FRIDAY 4th OCTOBER - THEAVES & EWES**
- **SATURDAY 5th OCTOBER - RAM FAIR *Show & Sale - MV Section**
- **FRIDAY 11th OCTOBER - STORE LAMB SALE**
- **SATURDAY 19th OCTOBER - HPLS HILL SHEEP**
- **FRIDAY 25th OCTOBER - STORE SHEEP inc Rams**
- **FRIDAY 8th NOVEMBER - STORE SHEEP**
- **FRIDAY 22nd NOVEMBER - STORE SHEEP**
- **FRIDAY 8th DECEMBER - FINAL ROUND UP**

For any further information or to enter your Sheep into any of the above sales please speak to a member of our Livestock Team on 01629 812777 (option 3)

Tel Bakewell: 01629 812777

Email: bakewellmarket@bagshaws.com

www.bagshaws.com



4
 3
 2
 tbc
 36.65

Breach Gorse Cottage
Breach Lane, Sudbury, Ashbourne, DE6 5HH

A truly rare and exquisite opportunity to purchase a farmstead situated in a rural village, to include a spacious four bedroom farmhouse, a diverse range of modern agricultural buildings, and surrounding land all extending in total to approximately 36.65 acres. The property is subject to an agricultural occupancy condition, and offered as a whole.

Guide Price : £1,500,000

All enquiries to our Ashbourne Office 01335 342201 or Ashbourne@bagshaws.com

Ashbourne 01335 342201
 Bakewell 01629 812777
 Buxton 01298 27524
 Leek 01538 383344
 Uttoxeter 01889 562811
 Penkridge 01785 716600



Scarsdale Vets, Pride Veterinary Centre,
Riverside Road, Pride Park, Derby, DE24 8HX

**RABI Fundraising
Quiz Night**

7.30pm

Thursday 17th October 2024

£10 per person to include pie and pea supper



Max 6 people per team



Booking essential.
 Please call the
 Scarsdale Markeaton
 office on **01332 294929**
 to reserve your ticket.

Booking and dietary requirements needed by 9/10/2024



Registered Charity no: 208858

146 BARREN, OTM AND FEEDING COWS overall ave 183.8p/kg or £1247**(Auctioneer Oliver Hiles)****(Up 3 pence)**

More cows and dearer on the week with cow meat still very much in vogue and some excellent prices throughout. 2 lovely pure blue cows from Messrs Tinker, Rotherham made 249p and 236p (both over £2000) with the better bred cows 220p plus. If you have not sold cows for a while, come and have a look for yourself at what we can achieve in Bakewell with a full ring of eager buyers who compete hard for your cows. If you would like any information on how much we could make of your cattle, give me a call on 07801 530899.

Results:

249p/kg	842kg	B Blue x	H Tinker & Sons, Rotherham
241p/kg	636kg	Hfd	TA & DE Spooner, Upper Hulme
236p/kg	908kg	B Blue x	H Tinker & Sons, Rotherham
236p/kg	790kg	Lim	Hazlewood Hall Farm,
228p/kg	940kg	Lim	GH & VD Wood & Son, Carlecoates
227p/kg	988kg	Char	IP Carrington, Kniveton
226p/kg	774kg	Char	FA & PJ Pilkington, Kniveton
225p/kg	756kg	Lim	GH & VD Wood & Son, Carlecoates
225p/kg	672kg	Lim	CT Bainbridge, Belper
224p/kg	576kg	Lim	CT Bainbridge, Belper
219p/kg	640kg	AA	JA Bryer & Son, Turnditch

Gross Prices:

£2242.76	988kg	Char	IP Carrington, Kniveton
£2143.20	940kg	Lim	GH & VD Wood & Son, Carlecoates
£2142.88	908kg	B Blue x	H Tinker & Sons, Rotherham
£2096.58	842kg	B Blue x	H Tinker & Sons, Rotherham
£1864.40	790kg	Lim	Hazlewood Hall Farm
£1843.98	842kg	Lim	Hazlewood Hall Farm
£1774.80	870kg	Char	R Prue & Son, Alfreton
£1749.24	774kg	Char	FA & PJ Pilkington, Kniveton
£1747.22	878kg	Sim	Buckingham & Bishop, Ingleby
£1742.50	850kg	AA	JS & M Hollinrake, Flagg
£1724.30	802kg	AA	JH Kennington, Ecclesfield
£1701.00	756kg	Lim	GH & VD Wood & Son, Carlecoates
£1664.60	812kg	B Blue x	J Cundy, Longnor
£1663.64	836kg	Lim	JJ Bradley, Adlington
£1651.32	834kg	Blond x	D Rogers, Whaley Bridge

55 Black & White and ex dairy cows ave 166.5p

Like all cows, dearer on the week.

1 UTM 1 calf cow 208p

Best fed cows 185-198p

Big Holsteins 170-185p

Leaner parlour types 160-170p

Plainer cows under 150p

The best today:

208p/kg	£1227	Holst, 26 mnths	E Morley & Sons, Kirk Langley
198p/kg	£1132	Fries, 3 ½ yrs	Wager & Son, Hartington
195p/kg	£1606	Holst, 4 yrs	E Morten & Sons, Barmoor Clough
193p/kg	£1563	Fries, 8 yrs	G & M Limer, Taddington
189p/kg	£1391	Fries, 5 yrs	G & M Limer, Taddington
188p/kg	£1334	Fries, 6 yrs	J Brough & Son, Rudyard
186p/kg	£1421	Fries, 7 yrs	P Furness, Monyash
185p/kg	£1487	Holst, 11 yrs	P Furness, Monyash
185p/kg	£1346	Mont, 5 yrs	P Furness, Monyash
185p/kg	£1357	Fries, 6 yrs	WE Bennett & Sons, Somersal
185p/kg	£1243	Ayr, 8 yrs	H Tinker & Sons, Rotherham
184p/kg	£1357	Holst, 6 yrs	P Furness, Monyash

3 OTM Bulls

223p/kg	£2238	Lim, 4 yrs	D & LA Critchlow, Sheen
221p/kg	£1759	Lim, 32 mnths	TF & Thompson, Longnor

6 OTM Steers

	£2300	B Blue, 6 yrs	MD Naylor, Bakewell
237p/kg	£1369	Hfd, 31 mnths	PC Mason, Hulland

151 FINISHED CATTLE ave 274.3p/kg

(Auctioneer Oliver Hiles)

More cattle and even dearer than last week when they looked unreal. Not as many suckler bred sorts on offer but plenty of well fed, dairy bred Blue and Angus sorts that look well sold again.

26 Young Bulls ave 258.7p

Strong money again with the best still nicely over £3/kg and up to 324p for a suckler bred Limmy from Steven & Ben Jones, Idridgehay who had another at 318p. A big Blond added up well to £2719 with B/W's to 244p or £1839 for Neil Massey, Spondon.

Results:

324p/kg	598kg	Lim	S & CM Jones & Sons, Idridgehay
318p/kg	644kg	B Blue x	S & CM Jones & Sons, Idridgehay
307p/kg	642kg	Lim	D & SE Edge, Pike Hall
300p/kg	632kg	Lim	D & SE Edge, Pike Hall
291p/kg	620kg	Lim	D & SE Edge, Pike Hall
289p/kg	684kg	B Blue x	S & CM Jones & Sons, Idridgehay
280p/kg	704kg	Lim	D & SE Edge, Pike Hall
279p/kg	678kg	Lim	C & D Jeffery, Pilsley
276p/kg	718kg	Lim	C & D Jeffery Pilsley

Gross Prices:

£2719.32	1054kg	Blond x	R Spooner, High Peak
£2065.02	762kg	B Blue x	C & D Jeffery, Pilsley
£2047.92	644kg	B Blue x	S & CM Jones & Sons, Idridgehay
£1981.68	718kg	Lim	C & D Jeffery, Pilsley
£1976.76	684kg	B Blue x	S & CM Jones & Sons, Idridgehay

£1971.20	704kg	Lim	D & SE Edge, Pike Hall
£1970.94	642kg	Lim	D & SE Edge, Pike Hall
£1952.10	810kg	AA	Riverside Farmers, Scropton
£1937.52	598kg	Lim	S & CM Jones & Sons, Idridgehay
£1920.00	800kg	Sim	JA Duggins, Swadlincote

63 Steers ave 275.1p/kg

A bigger show and some well fed cattle in the offering but not the overall class of last week. Suckler bred sorts to 330p and 324p for Stan & Geoff Evans with all the suckler bred sorts 300p +. Dairy bred Angus to 295p, Herefords to 270p and even a Dexter made 240p. 5 B/W's to 238p.

Results:

330p/kg	654kg	Lim	S Evans, Edwinstowe
324p/kg	716kg	Lim	S Evans, Edwinstowe
319p/kg	626kg	Lim	PJ Blackshaw, Pilsley
315p/kg	630kg	B Blue x	BD & JH Ponsonby, Tideswell Moor
314p/kg	708kg	Lim	S Evans, Edwinstowe
314p/kg	630kg	B Blue x	BD & JH Ponsonby, Tideswell Moor
314p/kg	628kg	Lim	S Evans, Edwinstowe
306p/kg	664kg	Char	PJ Blackshaw, Pilsley
306p/kg	530kg	Lim	P Redfearn, Marple

Gross Prices:

£2319.84	716kg	Lim	S Evans, Edwinstowe
£2230.54	746kg	Lim	S Evans, Edwinstowe
£2223.12	708kg	Lim	S Evans, Edwinstowe
£2158.20	654kg	Lim	S Evans, Edwinstowe
£2140.20	738kg	Lim	PJ Blackshaw, Pilsley
£2082.06	774kg	Lim	TW & G Fountain, Marston Montgomery
£2031.84	664kg	Char	PJ Blackshaw, Pilsley
£2024.64	684kg	B Blue x	BD & JH Ponsonby, Tideswell Moor
£2016.00	700kg	AA	Belper Skip Hire, Moorwood Moor
£2003.12	686kg	B Blue x	SJ Wainwright, Poynton

62 Heifers ave 281.1/kg

NEW RECORD – A new high price for a Monday market was set with a superb Beef Shorthorn x Limousin heifers that sold for 380p to gross £2424 from James, Mark & Lynne Hodgkinson, Earl Sterndale and was purchased by Joe Kemp, Quality Butchers in Hayfield. Trade on the whole was unreal.

Results:

380p/kg	638kg	S Horn	H Hodgkinson & Sons, Earl Sterndale
364p/kg	542kg	Lim	AR Maier, Brassington
348p/kg	546kg	Lim	AR Maier, Brassington
348p/kg	640kg	Lim	PJ Blackshaw, Pilsley
348p/kg	52kg	Lim	AR Maier, Brassington
344p/kg	628kg	Lim	RG Bacon, Wadshelf
341p/g	646kg	Lim	RG Bacon, Wadshelf

336p/kg	608kg	Blond x	Misk Farm, Kirkby in Ashfield
326p/kg	540kg	Lim	A Sims Ltd, Hulland
321p/kg	630kg	Lim	RG Bacon, Wadshelf
316p/kg	592kg	B Blue x	P Furness, Monyash

Gross Prices:

£2424.40	638kg	S Horn	H Hodgkinson & Sons, Earl Sterndale
£2227.20	640kg	Lim	PJ Blackshaw, Pilsley
£2202.86	646kg	Lim	RG Bacon, Wadshelf
£2160.32	628kg	Lim	RG Bacon, Wadshelf
£2075.52	736kg	Blond x	Misk Farm, Kirkby in Ashfield
£2058.24	768kg	Lim	R Wood, Middleton by Youlgreave
£2057.68	712kg	Lim	TW & G Fountain, Marston Montgomery
£2047.76	716kg	AA	S & M Boam, Flagg
£2042.88	608kg	Blond x	Misk Farm, Kirkby in Ashfield
£2022.30	630kg	Lim	RG Bacon, Wadshelf
£2012.10	706kg	AA	S & M Boam, Flagg

STORE & BREEDING CATTLE – (Auctioneers Alastair Sneddon & Meg Elliott)

Big numbers on offer with a total of 521 head forward.

Trade solid, but some cattle a shade less than we have seen them. This is hardly surprising bearing in mind the figures achieved all Summer.

The sale commenced with a selection of **Breeding Cattle** which included:

£2300	Char Cow, 112 mnths & Hfr Calf	Boden & Davies, Mellor
£2000	Char Cow, 74 mnths & Bull Calf	Boden & Davies, Mellor
£1290	B Blue x Cow, 89 mnths i/c	H Jones, Hulland Ward
£1580	AA Bull, 82 mnths	Messrs Cockburns, Penistone

31 Feeding Bulls

Prices as follows:

£1440	Lim x	21 mnths	Redgate Farms, Brinsley
£900	Sim x	9-11 mnths	JA Duggins, Netherseal
£920	Hfd x	14 mnths	LS & L Watson, Bradley
£270	Holst	3-4 mnths	PA & J Swindell, Chelmorton
£930	Lim x	8 mnths	RC Tuxford, Lowdham
£1060	B Blue x	5-6 mnths	Roger Barlow, North Leverton
£930	Lim x	8 mnths	A Sharpe, Lowdham

318 Steers ave £1033

Demand for the strongest cattle still very good, but some of the mid range types a little easier.

Hereford & Angus very much in favour and some excellent results for the Black & Whites.

Sample Results:

£570	Angus x	8 mnths	AN & C Sread, Repton
£390	Holst 7	5-9 mnths	AN & C Sread, Repton
£1230	Lim x	9-10 mnths	FG & JR Critchlow, Sheen
£950	S Horn x	14 mnths	SJ & SP Harper, Onecote
£680	Fries 5	9-15 mnths	J & L MacPherson, Newchurch

£800	Hfd x	11-13 mnths	C Wild, Marple
£1300	B Blue x	11 mnths	Hopewell Farm, Adlington
£1070	Lim x	15 mnths	PG & AD Godber, Kimberley
£1110	B Blue x 6	12-14 mnths	JB Drabble, Tideswell
£930	Blue Albion	16 mnths	A & L Mills, Grindleford
£1650	Lim x	16-17 mnths	D Hadfield & Daughter, Wheston
£1310	Lim x	16 mnths	FD Stubbs, Tissington
£1180	AA x	14 mnths	JG & AM Spendlove, Belper
£1000	AA x7	17 mnths	RW & GM Richardson, Coton
£1220	Sim x	16 mnths	CW & BM Hudson, Longnor
£805	B Blue x 6	16-17 mnths	FT Bagnall, Longnor
£1080	AA x	16 mnths	A Hunter, Hognaston
£1070	Char x	14 mnths	S White, Tissington
£1250	Stab	17 mnths	Love Farming Ltd, Retford
£980	AA x	15-16 mnths	W Hague & Son, Bradfield
£1180	AA x	16-17 mnths	R & GE Fretwell, Penistone
£1100	AA x	16-17 mnths	JB & GE Hayward, Oughtibridge
£1290	Lim x	17 mnths	D Rogers, High Peak
£1230	B Blue x	19 mnths	Mrs EJ Mottram, Gratwick
£1380	Lim x 4	16 mnths	AP Pugh, Pilsley
£1460	AA x	25-26 mnths	RJ & HM Hall, Needwood
£1565	B Blue x 7	18-19 mnths	JM & BJ Harrison, Aldwark
£1400	B Blue x	18-26 mnths	PK& C Heathcote, Buxton
£1040	Fries	19 mnths	H Young, Peak Forest
£1080	AA x	17-18 mnths	Hall Partners, Litton
£1490	B Blue x	21-23 mnths	V Tabbernor & N Brassington, Youlgreave
£1170	Lim x	20-24 mnths	W Dilks, Shottle
£1440	B Blue x	22 mnths	CC Etches, Tissington

159 Heifers ave £918

A very varied selection this week with both bunches and individuals well sold.

The stronger cattle in great demand with the longer term types a little harder to sell, especially if small for their age.

Sample Results:

£490	AA x	7-8 mnths	AN & C Sread, Repton
£560	Hfd x	6-8 mnths	LS & L Watson, Bradley
£870	Lim x	8-10 mnths	A Sharpe, Lowdham
£800	B Blue x	15 mnths	C Wild, Marple
£950	B Blue x	13-14 mnths	SW Jennings, Peover
£890	Angus x	16-17 mnths	RN Wilcockson, Eastmoor
£900	B Blue x	12 mnths	PG & AD Godber, Kimberley
£990	Lim x	15 mnths	W Seward & Son, Duckmanton
£990	Angus x	15-16 mnths	W Seward & Son, Duckmanton
£1150	AA x	14 mnths	FD Stubbs, Tissington
£960	AA x	14-19 mnths	JG & AM Spendlove, Belper
£1150	B Blue x	30 mnths	JG & AM Spendlove, Belper
£1055	S Horn x	15-17 mnths	JR & DJ Hollingworth, Ockbrook

£1030	Hfd x	16-17 mnths	A Hunter, Hognaston
£1230	Char x	16 mnths	S White, Tissington
£930	Stab	17-18 mnths	Love Farming Ltd, Retford
£990	B Blue x	16-26 mnths	Mrs EJ Mottram, Gratwich
£900	AA x	19 mnths	N & D Woolley, Stanley
£1230	B Blue x 7	20-22 mnths	PK & C Heathcote, Buxton
£1090	B Blue x	18-19 mnths	Cubley Cottage Farm
£1110	Lim x	22-25 mnths	W Dilks, Shottle
£1080	B Blue x 4	22-27 mnths	W Latham, Sudbury
£1360	Lim x	22 mnths	B Nash, Bradley
£1340	Lim x	23-24 mnths	J Lomas & Sons, Brassington

69 CALVES (Auctioneer Ivor Lowe)

Another reasonable entry and a solid trade throughout, but possibly a little easier than seen over the last couple of weeks.

Best quality looking well sold with an older B Blue bull to £585 and heifer of the same breed to £625.

B/W's in short supply but those forwards meeting strong interest.

Bulls

B Blue	£585	Park Farm Land Ltd, Crowgate
Hfd	£400	RP Lawley, Draycott
Lim	£330	D Fotherby & Sons, Wormhill
Sim	£345	G Matkin, Idridgehay
Mont	£280	J & J Walton, Tideswell

Hfrs

B Blue	£625	Park Farm Land Ltd, Crowgate
Sim	£298	G Matkin, Idridgehay
Lim	£292	D Fotherby & Sons, Wormhill

1584 LAMBS & 735 EWES & RAMS & GOATS (Auctioneer Peter Oven)

An outstanding entry of 2319 sheep included 1584 lambs. Demand for the best meated dry lambs very good throughout. Lighter weights to 320p/kg for Blue Texel x. Butchers lambs to 326p/kg for Texel/Char lambs and heavy Texels to 320p/kg. The top gross of £159.81/head for overweight Southdown lambs. Overall average 276.76p/kg

Leading Prices: -

32.9kg	300p/kg	J Lomas
33.4kg	306p/kg	J Lomas
36.0kg	320p/kg	JA Godber
37.0kg	306p/kg	SR & RP Spencer
39.3kg	310p/kg	RJ & JA Hancock & Sons
40.2kg	324p/kg	GG Burton
41.4kg	316p/kg	AJ & JE Gagie
42.8kg	310p/kg	T Hall
43.8kg	324p/kg	B & J Chadfield
44.6kg	318p/kg	R Swift & Sons

45.5kg	326p/kg	AJ & JE Gagie
47.1kg	320p/kg	J Gould & Son
50.6kg	300p/kg	E Swift
53.1kg	289p/kg	R Swift & Sons
63.6kg	251p/kg	D Belfield

Averages:

Standard	To 320p/kg	Average 272.05p/kg
Medium	To 326p/kg	Average 277.42p/kg
Heavy	To 320p/kg	Average 279.9p/kg
Overweight	To 289p/kg	Average 278.41p/kg

Cull Sheep

(Auctioneers M Elliott & H Swift)

A huge entry of ewes forward this week, with a similar range of breed and creed as seen in weeks prior. Plenty of grazing accounts operating again today. A larger proportion of plain ewes.

Top of £189 for CA Potter of Bonsall, with plenty of strong ewes over £140. Meated Mules towards £110.

Medium goats forward and a strong trade too.

Ewes to £189	Ave £78.00
Rams to £170	Ave £111.13
Goats to £88	Ave £81.00