

## 11am

### Monday 28<sup>TH</sup> July 2025

**4 Cows & Calves, 1 In Calf, 3 Stock Bulls,**  
**10 Feeding Bulls, 153 Steers & Heifers**

- *Staff are on hand to assist with unloading from 7am in the Cattle section.*
- *Please make sure Breeding Cattle, Feeding Bulls & Lots 751-1050 are penned for 10am to allow time for paperwork to be processed & the sale to start on time*

### SPECIAL ENTRY

Pedigree Limousin Stock Bull, 7 Yrs



Bakewell Market - 01629 812777



### SPECIAL ENTRY



1 B Blue, 16 Mths

Bakewell Market - 01629 812777

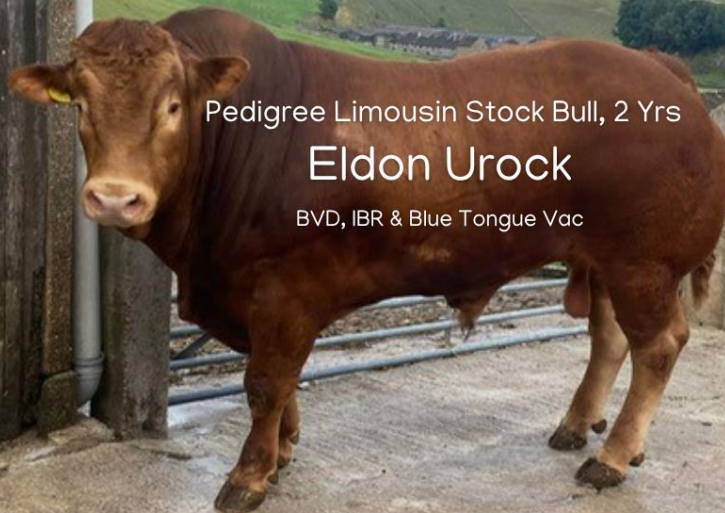


### SPECIAL ENTRY

Pedigree Limousin Stock Bull, 2 Yrs

**Eldon Urock**

BVD, IBR & Blue Tongue Vac



Bakewell Market - 01629 812777



## **Breeding Cattle**

		<b>TB Area</b>
SJ & L White, Wingerworth	1 A Angus Cow PD To AI B Blue, Due 30 <sup>th</sup> Septmber 1 Sim Cow With B Blue Str Calf, 3 Mths	6 Mths
M Naylor, Bakewell	1 $\frac{3}{4}$ B Blue Cow With Lim Hfr Calf Cow Served By AI B Blue & Has Run With Lim	6 Mths
RC Tuxford, Lowdham	2 Lim Cows With Calves	12 Mths

## **Stock Bulls**

		<b>TB Area</b>
GJ Steeples, Nuthall	1 Ped Saler, 4 Yrs	12 Mths
H Young, Peak Forest, F/A	1 Ped Lim, 2 Yrs <b>Eldon Urock</b> BVD, IBR & Blue Tongue Vac	6 Mths
P Kirkham, Hognaston	1 Ped Lim, 7 Yrs	6 Mths

## **Feeding Bulls**

		<b>TB Area</b>
L Slater & Sons, Winster	1 Lim, 12 Mths	6 Mths
E & C Matkin, Idridgehay, F/A	1 B Blue, 16 Mths	6 Mths
D Brown, Bonsall	3 Lim, 12-15 Mths	6 Mths
WP Wilson, Hilton	1 A Angus, 11 Mths	6 Mths
I Woodward, Duffield	4 Cont & Here, 15 Mths	6 Mths

## **HEIFERS**

**Important note: if you are selling store heifers- Unwanted pregnancies.**

**If you have any doubt whatsoever that the heifers you are selling might be in calf, please tell us so that it can be declared at the time of sale.**

**All store heifers are sold `clear of the bull` unless you tell us otherwise and unexpected pregnancies cause all sorts of problems.**

**Thank you for your help with this.**

## **MISSING TAGS**

**Please do not present cattle for sale with tags missing.**

**New tags can now be obtained in a matter of minutes. The nearest supplier to the market is Carrs Billington in Bakewell, 01629 814126**

## **NAMED SIRES**

**For the avoidance of doubt, we will only announce NAMED SIRES if the sire`s tag number is printed on the passport, accompanied by the full name of the registered bull.**

**We will announce SIRE TAG if the there is a sire`s tag number printed on the passport, but no name of a registered bull. You will appreciate that we do not have time to verify this information.**

**The details supplied to us on the signed entry form MUST be accurate, DNA tests are regularly carried out and the vendor will be liable for any discrepancies.**

## **ALTERATIONS TO PASSPORTS**

**Please make best efforts to avoid sending cattle where there is the need to alter the passport because of incorrect sex or breed.**

**These matters should be corrected before sending stock to market.**

## Store Cattle

<b>PEN</b>	<b>LOT NUMBER</b>	<b>VENDOR</b>		<b>TB Area</b>
<b>1</b>	751	L Slater & Sons, Wlnster	1 Lim Hfr, 7 Mths	6 Mths
<b>1</b>	752-755	JC Shepherd & Sons, Dungworth	4 Sim Strs, 8 Mths	48 Mths
<b>1</b>	756-760	I Meakin, Uttoxeter	5 A Angus Strs, 10-12 Mths	6 Mths
<b>2</b>	761-769	OR Prince & Partners, Hoar Cross, F/A	6 Dairy Shorthorn Strs, 10 Mths 1 A Angus Str, 11 Mths 1 A Angus Hfr, 11 Mths	6 Mths
<b>2</b>	770-772	RP Lawley, Draycott	1 Mont Str, 10 Mths 2 B Blue Hfrs, 12 Mths	6 Mths
<b>3</b>	773-783	JL & NT Walker, Matlock	11 Lim Strs & Hfrs, 11-13 Mths Suckler Bred	6 Mths
<b>4</b>	784-791	MJ Brewin, Newtown	8 A Angus Strs, 12-14 Mths, N Sires	12 Mths
<b>5</b>	792-797	L Marsden & Sons, Sheffield, F/A	3 A Angus Strs, 12 Mths 3 A Angus Hfrs, 12 Mths	48 Mths
<b>5</b>	798-801	J Bonsall, Atlow	4 Cont Steers & Hfrs, 12-15 Mths	6 Mths
<b>6</b>	802-804	D Brown, Bonsall	1 Lim Str, 14 Mths 2 Lim Hfrs, 14-15 Mths	6 Mths
<b>6</b>	805-808	JW & AE Faulkner, Radbourne, F/A	4 Lim Hfrs, 15-17 Mths BVD Tag & Tested	6 Mths
<b>6</b>	809-810	A Kirk, Underwood	2 Blond Strs, 15-16 Mths	12 Mths
<b>7</b>	811-820	H Young, Peak Forest	5 B Blue Strs, 16 Mths 5 B Blue Hfrs, 16 Mths	6 Mths
<b>8</b>	821-823	H Tinker & Sons, Wentworth	1 B Blue Str, 16 Mths 2 A Angus Hfrs, 10-11 Mths	48 Mths
<b>8</b>	824-827	S Seabridge, Sandon, F/A	4 Lim Strs, 17 Mths	6 Mths
<b>9</b>	828-830	JW & RG Ede, Youlgreave, F/A	3 Cont Strs, 18-20 Mths	6 Mths
<b>9</b>	831-833	C & A Titterton, Gratton	3 Cont Strs & Hfrs, 18-20 Mths	6 Mths
<b>10</b>	834-836	VH Mellor, Chelmorton, F/A	1 Here Str, 19 Mths 2 Here Hfrs, 19 Mths	6 Mths
<b>10</b>	837-841	LW Hancock, Stoney Middleton, F/A	1 A Angus Str, 20 Mths 2 A Angus Hfrs, 19-20 Mths 2 Longhorn Hfrs, 19-20 Mths	12 Mths
<b>11</b>	842-846	A Hall & Sons, Marchington	5 Lim Strs & Hfrs, 20 Mths	6 Mths
<b>11</b>	847-849	DJ Stubbs, Hopton	2 Blond Strs, 20 Mths 1 Blond Hfr, 20 Mths	6 Mths
<b>12</b>	850-853	G & M Limer & Sons, Taddington, F/A	4 Fries Strs, 20-21 Mths	6 Mths
<b>12</b>	854-857	A Gray, Biggin by Hulland	4 A Angus Strs, 20-22 Mths	6 Mths
<b>13</b>	858-861	J Shirt & Sons, Tideswell, F/A	2 B Blue Strs, 21-22 Mths 2 B Blue Hfrs, 21-22 Mths	6 Mths
<b>13</b>	862-863	D & A Dickinson, Bradbourne	1 Lim Hfr, 22 Mths 1 A Angus Hfr, 22 Mths, N Sire	6 Mths
<b>13</b>	864-866	CF Edge & Partners, Alsop Moor, F/A	3 B Blue Strs, 22-24 Mths	6 Mths
<b>14</b>	867-872	WP Wilson, Hilton	2 A Angus Strs, 23 Mths 1 B Blue Str, 23 Mths 2 Sim Strs, 15 Mths 1 B Blue Hfr, 23 Mths	6 Mths
<b>14</b>	873-875	A Leason, Ilam	2 A Angus Srt, 23 Mths, N Sire 1 Here Str, 23 Mths	6 Mths



<b>15</b>	876-880	JA Bryer & Son, Belper, F/A	3 B Blue Strs, 24 Mths 1 Char Hfr, 24 Mths 1 A Angus Hfr, 24 Mths	6 Mths
<b>15</b>	881-882	P Kirkham, Hognaston	2 Lim Hfrs, 24 Mths	6 Mths
<b>16</b>	883-887	Leasows Partners, Uttoxeter F/A	1 A Angus Str, 19 Mths 1 Here Str, 22 Mths 1 B Blue Hfr, 26 Mths 1 Here Hfr, 27 Mths 1 A Angus Hfr, 22 Mths	6 Mths
<b>16</b>	888-890	L Webster, Tissington	1 A Angus Str, 27 Mths, N Sire 2 Here Hfrs, 25 Mths, N Sires	6 Mths
<b>17</b>	891-902	WE Allen, Church Broughton	8 Lim Strs, 26-36 Mths 4 Lim Strs, 19 Mths	6 Mths
<b>18</b>	903-904	JP & SR Slack, Whaley Bridge	2 A Angus Strs, 15 Mths	12 Mths



If You Have Store & Breeding Cattle  
To Sell On  
Monday 4<sup>TH</sup> August 2025  
Call our Livestock Team (Option 2)  
Before 12 Noon on  
Friday 1<sup>ST</sup> August



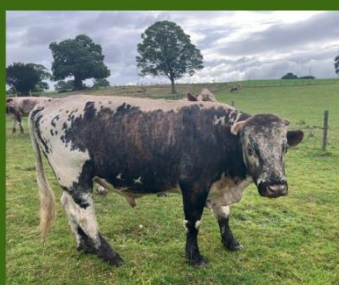
## Store & Breeding Cattle Section

### SPECIAL ENTRY

Monday 4th August

Dispersal of the Thorneycroft Lodge  
Herd of mainly Pedigree Longhorns  
to include:

- 1 Stock Bull - 3yrs
- 8 Cows with Feb born onwards Calves at Foot
- 3 Cows i/c
- 10 Steers & Heifers - 12-24 mnths



Bakewell Market 01629 812777



# DOVEDALE DOG TRIALS



CRAFT TENT  
FOOD & DRINK  
VINTAGE TRACTORS

WEDNESDAY ONLY

CHAMPIONSHIP OF THE DALES  
Wed 20<sup>th</sup> - 2.30pm approx

Adults -  
£7.50  
£10 Both Days  
Under 16s  
FREE

19<sup>th</sup> & 20<sup>th</sup> August

7am-7pm Approx

BLORE CROSSROADS

ILAM

NR ASHBOURNE  
DE6 2BS

Gates Open 7am

CASH ONLY

[www.dovedalesheepdogsociety.co.uk](http://www.dovedalesheepdogsociety.co.uk)

 Dovedale Sheep Dog Society

Hot Food  
Licensed Bar  
Icecream  
& Cakes

Trials Secretary: [dovedale.secretary@gmail.com](mailto:dovedale.secretary@gmail.com)  
Craft & Tractors: [catherineetches.shires@outlook.com](mailto:catherineetches.shires@outlook.com)  
or 07547576206

## MAJOR SUCKLER COW & CALF SALE

ON BEHALF OF TWO VENDORS



226 Head

Together with  
two Limousin and  
Simmental Stock Bulls  
and 11 In Calf Heifers



At Bakewell Livestock Centre, Derbyshire DE45 1AH

Thursday  
7th August 2025  
at 11.00am



[www.bagshaws.com](http://www.bagshaws.com)