



## 11am

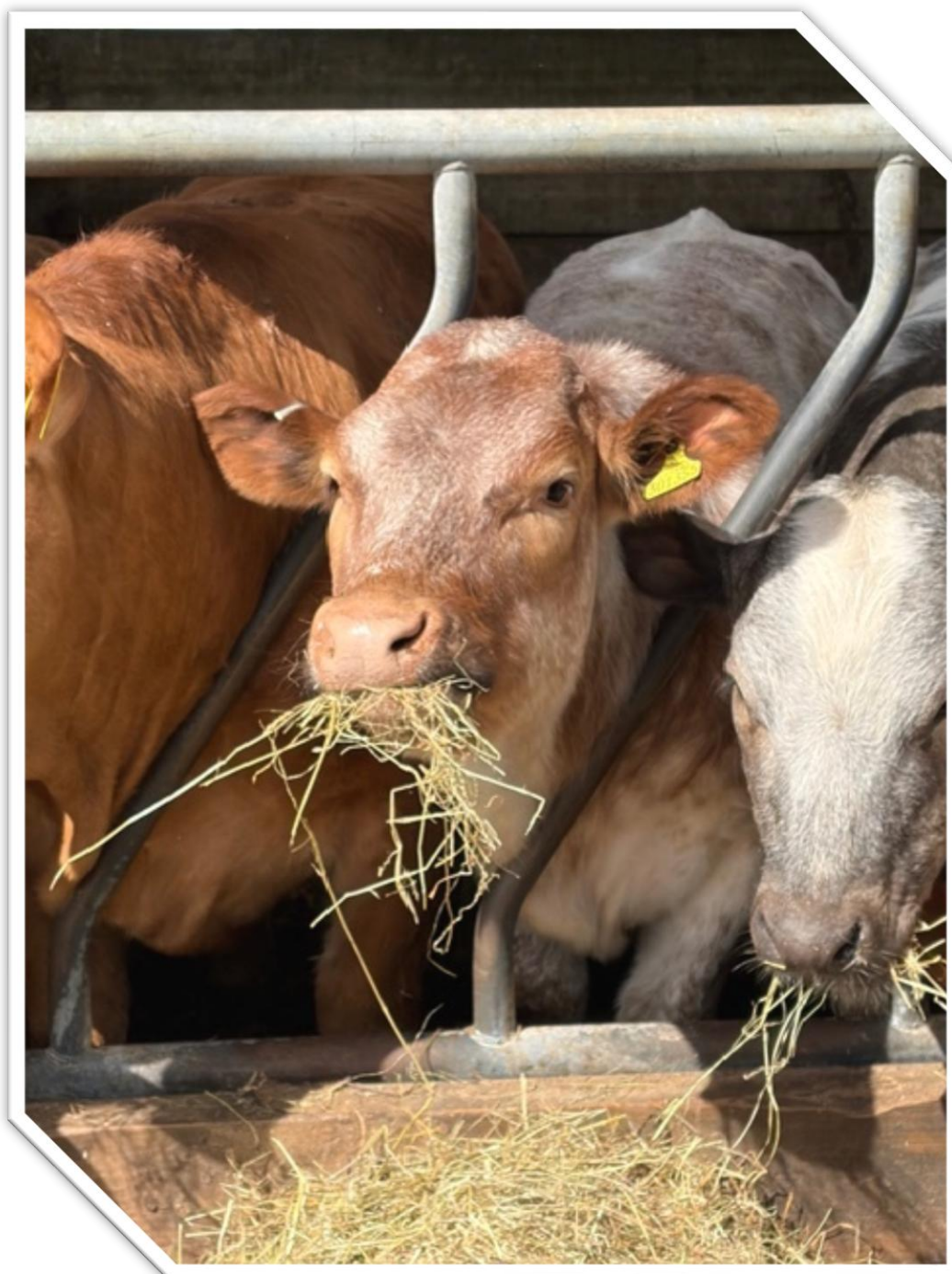
### Monday 20<sup>TH</sup> April 2026

8 Cows & Calves, 1 Stock Bulls, 2 Feeding Cows,  
19 Feeding Bulls, 522 Steers & Heifers

- *Staff are on hand to assist with unloading from 7am in the Cattle section.*
- *Please make sure Breeding Cattle, Feeding Bulls & Lots 751-1050 are penned for 10am to allow time for paperwork to be processed & the sale to start on time*

## WE ARE AT FULL CAPACITY

PLEASE DO NOT BRING ANY UN-ENTERED CATTLE



## **Breeding Cattle**

		<b>TB Area</b>
AJ Byron, Denstone	2 Sim Sows With Calves 1 Char Cow With Calf 4 Black Red Poll Cows With Calves	6 Mths
PW Lomas, Flagg	1 Pure Bred Sth Devon Cow With Lim Calf	6 Mths

## **Stock Bulls**

		<b>TB Area</b>
GL Brown, Spondon, F/A	1 Ped A Angus, 80 Mths	6 Mths

## **Feeding Cows**

		<b>TB Area</b>
M Wain, Brassington	2	6 Mths

## **Feeding Bulls**

		<b>TB Area</b>
ER Herridge & Son, Tissington	2 Black & White 1 Here 4 A Angus, 9 Mths	6 Mths
E Morley & Sons, Kirk Langley, F/A	1 Holst 1 Here, N Sire, 14-17 Mths Pneumonia Vac x 2	6 Mths
JG & AM Spendlove & Son, Belper, F/A	1 B Blue, 14 Mths	6 Mths
P Atkin, Bamford	3 Holst, 12-14 Mths	12 Mths
PW Lomas, Flagg	1 Pure Char, 8 Mths	6 Mths
HE & N Dickinson, Muggington	1 Lim, 12 Mths	6 Mths
HB Wildgoose & Partners, Tissington	2 Here, 23 Mths, N Sires	6 Mths
S Mycock, Flagg	2 Blond, 11 Mths BVD Tag & Tested	6 Mths

## **HEIFERS**

**Important note: if you are selling store heifers- Unwanted pregnancies.**

**If you have any doubt whatsoever that the heifers you are selling might be in calf, please tell us so that it can be declared at the time of sale.**

**All store heifers are sold `clear of the bull` unless you tell us otherwise and unexpected pregnancies cause all sorts of problems.**

**Thank you for your help with this.**

## **MISSING TAGS**

**Please do not present cattle for sale with tags missing.**

**New tags can now be obtained in a matter of minutes. The nearest supplier to the market is Carrs Billington in Bakewell, 01629 814126**

## **NAMED SIRES**

**For the avoidance of doubt, we will only announce NAMED SIRES if the sire`s tag number is printed on the passport, accompanied by the full name of the registered bull.**

**We will announce SIRE TAG if the there is a sire`s tag number printed on the passport, but no name of a registered bull. You will appreciate that we do not have time to verify this information.**

**The details supplied to us on the signed entry form MUST be accurate, DNA tests are regularly carried out and the vendor will be liable for any discrepancies.**

## **ALTERATIONS TO PASSPORTS**

**Please make best efforts to avoid sending cattle where there is the need to alter the passport because of incorrect sex or breed.**

**These matters should be corrected before sending stock to market.**

## Store Cattle

PEN	LOT NUMBER	VENDOR		TB Area
1	751-753	A Dickinson, Heage	2 Sim Strs, 6 Mths 1 A Angus Str, 9 Mths Pneumonia Vac x 2	6 Mths
1	754-757	C Clamp, Swadlincote	3 Fries Strs, 7 Mths 1 Shorthorn Str, 7 Mths	6 Mths
1	758	JW Radford, Longnor	1 B Blue Str, 8 Mths	6 Mths
1	759-762	W Frith, Ashbourne	4 B Blue Hfrs, 9 Mths	6 Mths
2	763-766	M Wain, Brassington	4 Dexter Strs & Hfrs, 7 Mths	6 Mths
2	767	PW Lomas, Flagg	1 Lim Hfr, 9 Mths	6 Mths
2	768-771	Springfield Farm Ltd, Ambergate, F/A	2 A Angus Hfrs, 7-11 Mths, N Sire 2 B Blue Hfrs, 9 Mths	6 Mths
2	772-773	J Bradley, Sutton Bonnington	1 Beef Shorthorn Str, 12 Mths 1 Beef Shorthorn Hfr, 11 Mths	12 Mths
3	774-775	T & CJ Hadfield, Wheston	1 Fries Str, 8 Mths 1 Here Hfr, 12 Mths, N Sires	6 Mths
3	776-777	N Beardsley, Muggington	1 Here Str, 7 Mths 1 Here Hfr, 11 Mths Suckler Bred	6 Mths
3	778-783	KE Montague, Ashover	6 Lim Strs & Hfrs, 9-10 Mths	6 Mths
3	784	N Beswick, Buxton	1 Here Str, 10 Mths	6 Mths
4	785-786	J Hughes, Castleton	1 Longhorn Str, 12 Mths 1 B Blue Str, 12 Mths	12 Mths
4	787-794	A & R Allsop, Smalley	4 Here Strs, 10 Mths, N Sire 4 Here Hfrs, 10 Mths, N Sire	6 Mths
5-6	795-812	AE Allcock, Waterhouses	3 A Angus Strs, 9-12 Mths, N Sires 12 A Angus Hfrs, 9-12 Mths, N Sires 1 Linc Red Hfr, 13 Mths 1 B Blue Hfr, 12 Mths 1 Lim Hfr, 11 Mths	6 Mths
6	813-815	R & W Greenwood, Barton Under Needwood	1 Lim Str 2 Lim Hfrs, 10-12 Mths	6 Mths
7	816-821	EA Cooper, Flagg, F/A	6 Cont Strs & Hfrs, 10-12 Mths	6 Mths
7	822-825	C Mewies, Anslow	1 Lim Str, 9 Mth 1 Sth Devon Str, 12 Mths 1 A Angus Str, 12 Mths 1 Lim Hfr, 11 Mths Suckler Bred	6 Mths
8	826-835	FA Yates, Alstonefield, F/A	2 Lim Strs, 11-13 Mths 3 Stab Strs, 9-11 Mths 1 Lim Hfr, 13 Mths 4 Stab Hfrs, 11-13 Mths BVD Tag & Tested, Blue Tongue Vac	6 Mths
9	836-843	Ridgewood Farm	8 Beef Shorthorn Hfrs, 10-12 Mths N Sire, Scanned Clear Of Bull	6 Mths
9-10	844-857	C Vose	14 Saler Strs & Hfrs, 9-14 Mths	
11-12	858-872	Philip Hill & Co, Swadlincote	15 A Angus & Lim Hfrs, 11-12 Mths N Sires, Suckler Bred	6 Mths
12	873-878	AE & VJ Parkinson	6 A Angus Strs & Hfrs, 12 Mths, N Sires	6 Mths
13	879-885	GRP Cottrell, Fenny Bentley	7 Lim & Here Hfrs, 11-12 Mths, N Sire	6 Mths

<b>13</b>	886-889	DV Ford, Kirk Ireton	4 A Angus x B Blue Strs, 12 Mths	6 Mths
<b>14</b>	890-896	PJ Townsend, Tideswell Moor	7 B Blue Strs & Hfrs, 12 Mths	12 Mths
<b>14</b>	897-899	RA & SJ Marsden, Sheffield	2 A Angus Strs, 15 Mths 1 A Angus Hfr, 15 Mths	48 Mths
<b>15</b>	900-909	S & LJ Dyson, Hollow Meadows	10 Stab Strs, 12-13 Mths	48 Mths
<b>16</b>	910-919	JR & DJ Hollingworth, Ockbrook, F/A	10 Beef Shorthorn Strs & Hfrs, 12-13 Mths Suckler Bred	12 Mths
<b>17</b>	920-931	CR Upton, Yoxall, F/A	3 A Angus Hfrs, 12-14 Mths 9 Here Hfrs, 12-14 Mths, N Sires	6 Mths
<b>18</b>	932-936	Messrs Froggatt, Blithbury, F/A	5 B Blue x Lim Strs, 12-14 Mths Suckler Bred	6 Mths
<b>18</b>	937-941	C Wild, Marple	5 A Angus Hfrs, 15 Mths, N Sires	
<b>19</b>	942-949	A Ballard, Alton	3 B Blue Strs 1 Beef Shorthorn Str 1 Here Str 1 B Blue Hfr 2 Lim Hfrs, 10-17 Mths	6 Mths
<b>19</b>	950-952	J Nickission, Stockport	2 B Blue Hfrs, 14 Mths 1 A Angus Hfr, 17 Mths	48 Mths
<b>20</b>	953-954	Buntingfield Farm, Ashover	2 Lim Strs, 12-13 Mths	6 Mths
<b>20</b>	955-963	ST Gould, Warslow	4 Here Hfrs, 17-24 Mths 2 A Angus Hfrs, 17 Mths 2 B Blue Hfrs, 17 Mths 1 Lim Hfr, 18 Mths	6 Mths
<b>21</b>	964-974	Riverside Farm, F/A	1 Char Str, 11 Mths 4 A Angus Strs, 12 Mths, N Sires 3 Char Hfrs, 16 Mths 3 A Angus Hfrs, 12 Mths, N Sires	6 Mths
<b>22</b>	975-987	PB Enterprises, Barton Under Needwood	8 Here Strs, 13 Mths, N Sires 5 Here Hfrs, 13 Mths, N Sires	6 Mths
<b>23</b>	988-999	NS Seaton & Son, Marston	8 A Angus Strs, 10-14 Mths 3 A Angus Hfrs, 13-22 Mths 1 Here Hfr, 14 Hfrs	6 Mths
<b>24-27</b>	1000-1036	E Morley & Sons, Kirk Langley, F/A	14 A Angus Strs, N Sires 4 Here Strs, N Sires 3 B Blue Strs 16 A Angus Hfrs, N Sires, 14-17 Mths Pneumonia Vac x 2	6 Mths
<b>28</b>	1037-1046	P Furness, Monyash, F/A	5 Fries Strs, 16 Mths 5 B Blue Strs, 15-16 Mths	6 Mths
<b>29</b>	1049-1056	D Wardman, Ashover	4 Sim Strs & Hfrs 2 Here Strs 2 B Blue, 18 Mths	6 Mths
<b>30</b>	1057-1067	JA Clowes & Sons, Cubley, F/A	1 B Blue Hfr 10 Char Hfrs, 14-18 Mths	6 Mths
<b>31</b>	1068-1077	D Rodgers, Whaley Bridge	3 B Blue Strs, 17 Mths 1 A Angus Str, 17 Mths 2 Fries Strs, 17 Mths 2 B Blue Hfrs, 17 Mths 1 Angus Hfr, 17 Mths 1 Char Hfr, 17 Mths	6 Mths
<b>32</b>	1078	S Beswick, Buxton	1 B Blue Hfr, 17 Mths	6 Mths

<b>32</b>	1079-1082	RA Archer, Bradley, F/A	4 A Angus Hfrs, 16-23 Mths, N Sires	6 Mths
<b>32</b>	1083-1087	R Bennett & Son, Bamford	5 B Blue Strs & Hfrs, 18 Mths	12 Mths
<b>33</b>	1088-1090	R Brough, Pike Hall	3 B Blue Hfrs, 16-17 Mths	6 Mths
<b>33</b>	1091-1098	M Pilkington, Kniveton, F/A	2 Char Strs, 18 Mths 6 Char Hfrs, 18-19 Mths BVD Acc, High Health	6 Mths
<b>34-35</b>	1099-1112	JP & SL Hotchin, Parwich, F/A	6 A Angus Strs, 16-20 Mths 5 Holst Strs, 15-18 Mths 1 B Blue Str, 18 Mths 1 A Angus Hfr, 18 Mths 1 Holst Hfr, 23 Mths	
<b>35</b>	1113-1118	P Harrison, Priestcliffe	6 B Blue Hfrs, 20 Mths	6 Mths
<b>36</b>	1119—1130	D Langton, Belper	11 Char Strs 1 Char Hfr, 16-20 Mths Out Of B Blue & Lim Cows	6 Mths
<b>37</b>	1131-1140	A Cooper, Elton,	6 B Blue Strs 4 Lim Strs, 19 Mths	6 Mths
<b>38</b>	1141	DBR Farming, Meir Heath	1 Here Str, 19 Mths	6 Mths
<b>38</b>	1142-1150	G & M Limer, Taddington, F/A	4 Lim Strs, 19-20 Mths 1 B Blue Str, 22 Mths 4 Fries Strs, 20 Mths	6 Mths
<b>39</b>	1151-1160	FH White, Shottle, F/A	10 B Blue & A Angus Strs & Hfrs, 20 Mths	6 Mths
<b>40</b>	1161-1164	D Evans, Little Haywood	4 Beef Shorthorn Strs & Hfrs, 21-23 Mths	6 Mths
<b>41-42</b>	1165-1179	V & L Pott Ltd, Stanhope, F/A	1 Here Str, 19 Mths, N Sire 5 B Blue Strs, 19-20 Mths 2 Holst Strs, 19-20 Mths 4 Here Hfrs, 19-21 Mths, N Sire 2 B Blue Hfrs, 19 Mths 1 A Angus Hfr, 19 Mths	6 Mths
<b>43</b>	1180-1187	B Woolley & Son, Monyash, F/A	8 Beef Shorthorn Hfrs, 20- 21 Mths	6 Mths
<b>44</b>	1188-1191	J Shardlow, Shirland	4 Here Strs & Hfrs, 20 Mths	6 Mths
<b>45</b>	1192-1203	AC Langridge, Fole, F/A	12 A Angus Strs, 19-23 Mths, N Sire	6 Mths
<b>46-47</b>	1204-1215	Ellis Farming, Thurvaston, F/A	5 A Angus Strs & Hfrs, 19-20 Mths 7 B Blue Strs & Hfrs, 19-20 Mths	6 Mths
<b>47</b>	1216-1218	CC Etches, Tissington	1 B Blue Str, 22 Mths 2 B Blue Hfrs, 22 Mths	6 Mths
<b>48</b>	1219-1225	M Hambleton, Alstonefield, F/A	3 B Blue Strs, 23 Mths 4 B Blue Hfrs, 23 Mths Suckler Bred	6 Mths
<b>48</b>	1226-1230	JG & AM Spendlove & Son, Belper, F/A	5 A Angus Strs & Hfrs, 18-22 Mths, N Sires	6 Mths
<b>49</b>	1231-1238	CH & AJ Berrisford, Cheddleton	2 Shorthorn Strs, 20 Mths 4 Lim Strs, 22 Mths 2 Lim Hfrs, 24 Mths	6 Mths
<b>50</b>	1239-1240	NJ Kirk, Brinsley, F/A	2 Flech Hfrs, 20 Mths	6 Mths
<b>50</b>	1241-1246	JG Belfield, Sheen, F/A	4 A Angus Strs, 21-25 Mths, N Sires 2 A Angus Hfrs, 22 Mths, N Sires	6 Mths
<b>51</b>	1247-1249	J Bramall, Totley	3 B Blue & Lim Strs, 22 Mths	48 Mths
<b>51</b>	1250-1253	J Austin, Parwich	2 Lim Str, 22 Mths 2 Lim Hfrs, 22 Mths	6 Mths
<b>52</b>	1254-1256	D Allsop, Bonsall, F/A	2 Lim Strs, 22 Mths 1 Char Str, 22 Mths	6 Mths

			Outliers, Suckler Bred	
<b>52</b>	1257-1261	RJ Litchfield & Son, Newborough	4 Sim Strs, 21-22 Mths 1 Lim Str, 29 Mths	6 Mths
<b>53</b>	1262-1264	S Franks, Bradfield	3 Ped Char Hfrs, 24 Mths Polled	48 Mths
<b>53</b>	1265-1269	M Longdon Longnor	5 A Angus Hfrs, 27-28 Mths	6 Mths
<b>54</b>	1270-1273	K Spencer, Wirksworth	4 B Blue Strs, 34 Mths	6 Mths



If You Have Store & Breeding Cattle  
 To Sell On  
 Monday 27<sup>TH</sup> April 2026  
 Call our Livestock Team (Option 2)  
 Before 12 Noon on  
 Friday 24<sup>th</sup> April



## FIRST AID TRAINING

### The Farm Edition

**Wed 6<sup>th</sup> May**

- An interactive session at Bakewell ABC
- Real Life Scenarios
- Hands-on practice
- £95 per person

**Contact Hannah  
to Register  
01629 812777**



[www.bagshaws.com](http://www.bagshaws.com)